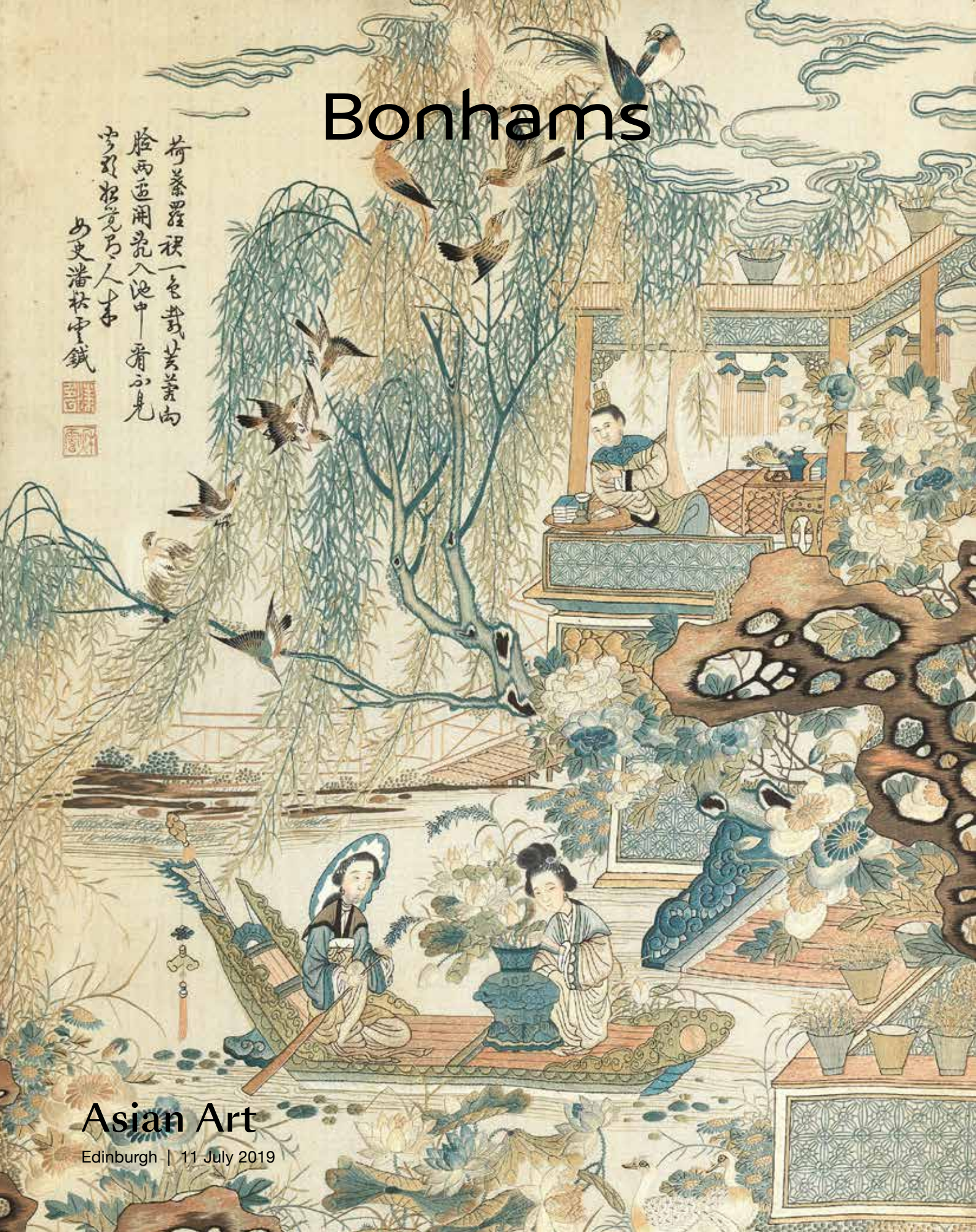


Bonhams

荷葉羅裙一色裁，芙蓉面
臉兩面開。花入池中，看不見
少時相見乃人來

女史潘松中鏡



Asian Art

Edinburgh | 11 July 2019

永盛餘記

湖州府菱湖鎮永盛號
 里潔白細絲線大番各
 乾記齊弗親自出水種
 提尖勻細白亮八絲單
 顧須認本號圖書為記

道光貳拾六年吉月吉日

共細絲拾貳把計重壹仟貳百餘

箱

KOO TON

Superior Na

Chem

本號開張浙杭海寧
 鎮親製選無上
 清淺潔細白單片每
 里大胡各路肥細者
 士商賜顧請認圖記
 本號圖書為記
 頂上商標
 一密商利之徒假冒鳳
 法射利各日甚一日
 意圖者請認
 庶免有誤
 庶免有誤
 庶免有誤

伍年

拾兩



肥細各
 清水線經
 本號圖書為記

土件

真淺色
 計重

月

本號開張浙杭海寧
 鎮親製選無上
 清淺潔細白單片每
 里大胡各路肥細者
 士商賜顧請認圖記
 本號圖書為記

Asian Art

Thursday 11 July 2019 at 11am
22 Queen Street, Edinburgh

BONHAMS

22 Queen Street
Edinburgh EH2 1JX
+44 (0) 131 225 2266
+44 (0) 131 220 2547 (fax)
www.bonhams.com/edinburgh

VIEWING

Monday 8 July 10am to 4pm
Tuesday 9 July 10am to 4pm
Wednesday 10 July 10am to 4pm
Thursday 11 July 9am to 11am

SALE NUMBER

25367

CATALOGUE

£10.00

BIDS

+44 (0) 20 7447 7447
+44 (0) 20 7447 7401 fax
bids@bonhams.com

Please note that bids should be submitted no later than 4pm on the day prior to the sale. New bidders must also provide proof of identity when submitting bids. Failure to do this may result in your bid not being processed. Bidding by telephone will only be accepted on a lot with the lower estimate of £500.

Live online bidding is available for this sale

Please email bids@bonhams.com with 'live bidding' in the subject line 48 hours before the auction to register or this service

ENQUIRIES

Ian Glennie
+44 (0) 131 240 2299
ian.glennie@bonhams.com

Asha Edwards
+44 (0) 131 240 2630
asha.edwards@bonhams.com

CONDITION REPORTS

Requests for condition reports for this sale should be emailed to: ian.glennie@bonhams.com

CUSTOMER SERVICES

Monday to Friday 8.30am to 6.00pm
+44 (0) 20 7447 7447
Please see page 2 for bidder information including after-sale collection and shipment

ILLUSTRATIONS

Front cover: Lot 115
Back cover: Lot 101
Inside front cover: Lot 91
Inside back cover: Lot 91

IMPORTANT INFORMATION

The United States Government has banned the import of ivory into the USA. Lots containing ivory are indicated by the symbol Φ printed beside the lot number in this catalogue.

REGISTRATION IMPORTANT NOTICE

Please note that all customers, irrespective of any previous activity with Bonhams, are required to complete the Bidder Registration Form in advance of the sale. The form can be found at the back of every catalogue and on our website at www.bonhams.com and should be returned by email or post to the specialist department or to the bids department at bids@bonhams.com

To bid live online and / or leave internet bids please go to www.bonhams.com/auctions/25367 and click on the Register to bid link at the top left of the page.



Bonhams 1793 Limited

Registered No. 4326560
Registered Office: Montpelier Galleries
Montpelier Street, London SW7 1HH

+44 (0) 20 7393 3900
+44 (0) 20 7393 3905 fax

Sale Information

Edinburgh Salerooms

22 Queen Street, EH2 1JX
+44 (0) 131 225 2266

Glasgow Office

Kirkhill House, Broom Road East
Newton Mearns
Glasgow G77 5LL
+44 (0) 141 223 8866

London

101 New Bond Street, W1S 1SR
+44 (0) 20 7447 7447
+44 (0) 20 7447 7400 fax

Managing Director

Charles Graham-Campbell

Chairman Scotland

Ray Entwistle

Valuations, Trusts & Estates

Charles Graham-Campbell
Grant MacDougall
Gordon McFarlan
Belinda Treble
Amanda Dovesi
Hamish Wilson

The Scottish Sale

Chris Brickley

Pictures

Chris Brickley
May Matthews
Chris Dawson (London)

Jewellery

Nathalie Jordan
Rebecca Bohle

Silver

Fiona Hamilton
Gordon McFarlan

Asian Art

Ian Glennie
Asha Edwards

European Ceramics & Glass

Sarah Shirley-Priest
Gordon McFarlan

Arms & Armour

Kenneth Naples

Furniture, Clocks, Rugs, Carpets, Works of Art & Scientific Instruments

Kenneth Naples
Charlotte Canby

Whisky

Martin Green
Georgia Williams
Charles MacLean (consultant)

The Sporting Sale

Hamish Wilson
Charlotte Canby

IMPORTANT NOTICE TO BUYERS

Furniture and larger works of art will remain at Bonhams Edinburgh free of charge until Friday 19 July 2019. Furniture and larger works of art not collected by this time may be removed to Bonhams warehouse facility offsite. Transport and storage charges will be applied. Prior to collection from the warehouse please contact Ian Glennie (0131 240 2299 or email ian.glennie@bonhams.com)

Japanese Art

Lots 1-45





1

1

A FOUR COMPARTMENT GOLD-LACQUER INRO

Edo period, 19th century

Both sides depicting the continuation of a river landscape, unsigned.
9.4cm high.

£300 - 400



3

2

A STRING OF VARIOUS OJIME AND BEADS

Comprising; carved bone, lacquer, wood, metal, glass and resin beads, (occasional damages).

Fifty beads strung as one necklace.

£300 - 500

3 *

A LARGE WOOD NETSUKE OF A STANDING TANUKI BOZU

Edo period (1615-1868), early-mid 19th century

The racoon dog standing in a human attitude, wearing a cowl over its head and enveloped in a robe which falls short of its feet, the wood slightly worn; *unsigned*.

9.8cm.

£200 - 300

Provenance:

Ivan LePage collection, no.261, purchased from Portier, Paris, 1922.



4

4

AN OPENWORK 'DRAGON' NETSUKE

By Toyomasa, Meiji Era

Finely carved and pierced as a single ferocious dragon amidst swirling clouds, signed to reverse.

4.6cm high

£600 - 800

Provenance:

Robert Rodgers (1922-1997), and thence by descent.



6



5

THREE BLACK AND GOLD-LACQUER SAKE STANDS TOGETHER WITH A SMALL JUG AND A SAKE CUP

Meiji era

Comprising: a pedestal-form stand, the cover with pierced designs spacing hats and scrolls, the column with shell-shaped apertures on a ground of plants and grasses, 18cm high; a large circular form example raised on flaring foot, decorated with paulownia leaves and scrolling vines, 14cm high; a miniature stand of circular form and raised on flaring foot, lacquered with a three-leaf mon and scrolling vines in gold on black, 6cm high; together with a matching straight-sided jug, 5.5cm high; and a similarly decorated sake cup with red lacquer interior and on high foot, 12cm diameter.

(5).

£400 - 600

6

A PAIR OF TALL-LEGGED SQUARE SAKE STANDS

Meiji era

Each with detachable cover with circular aperture and decorated with a landscape of waves and mountains in gold lacquer with mother-of-pearl details on black lacquer ground, the stand with gold diaper pattern and raised on four slender supports, (one with a repaired leg). 8cm high, 10.5cm square (4).

£400 - 600

7

A PARQUETRY TRAVEL DESK AND VARIOUS LACQUER WARES

Meiji and later

The desk formed by two pedestals, one with small cupboard door opening to reveal two deep drawers above a base drawer, the other with four graduated drawers, decorated all over with geometric designs, 27cm high, 70cm wide, 25.5cm deep; a black and gilt lacquer shrine stand, 45cm wide; two graduated red rectangular lacquer trays with birch bark edging, largest 40cm long; a Wajima writing box and cover decorated with flying cranes in gilt on black lacquer, with signed presentation box, 29cm x 22cm x 6.5cm; two decorative saucer dishes, 23.5cm diameter; three rectangular boxes with covers, all in black and gilt lacquer, widest 27cm; a rectangular tray in gold hiramaki-e with cricket and other insects on grasses, 18cm wide; and another small rectangular tray with landscape design. (qnty).

£250 - 350



7 (part lot)



7 (part lot)

For details of the charges payable in addition to the final Hammer Price of each Lot please refer to paragraphs 7 & 8 of the Notice to Bidders at the back of the catalogue.



8

8

A BLACK LACQUER BUNDAI (WRITING DESK)

Meiji Era, 19th century

The rectangular bundai raised on four trefoil feet, the black ground decorated in gold takamakie and gold togidashi with flowering peony issuing from a basket, butterflies above, applied with white metal engraved mounts, (old damages).

65cm wide

£500 - 600

9

A GOLD LACQUER BOX AND COVER

Meiji era

The rectangular cushion cover decorated with a pair of peacocks amidst peony issuing from rockwork, in gold takamakie with mother-of-pearl details on a nashiji ground, the box with stylised flowers and butterflies in gold hiramakie on a nashiji ground.

12.8cm long. (2).

£600 - 800



9

10

A BLACK-LACQUER JUBAKO AND A BLACK-LACQUER BOX

The box by Zohiko, Meiji/Taisho era

The four-tier jubako decorated to square cover and sides with pine and prunus in gold and red lacquer, red lacquer interiors, 23.3cm high; the rectangular box with detachable cover lacquered with a cockerel on a prunus branch in gold, silver and red, bearing Zohiko seal mark to base, 13.4cm wide, and with tomobako box.

(8).

£300 - 500

11

TWO SETS OF GRADUATED GOLD-LACQUERED SAKAZUKI (SAKE CUPS)

Meiji era

Each of thin turned and assembled wood, with red-lacquer ground and decorated in gold and silver hiramakie and takamakie; one set of three decorated with landscapes of ships and buildings amidst clouds; the other set of three with red-crested cranes, and pine branches to reverse.

Largest 13.8cm diameter.

£500 - 600



10 (part lot)

12 •

A SMALL GROUP OF REFERENCE BOOKS ON JAPANESE NETSUKE

Including: N. Davey, *Netsuke*, New York, 1974; B. Hurtig, *Masterpieces of Netsuke Art*, New York 1973.

(6).

£500 - 700

13

A RED GINBARI AND CLOISSONÉ ENAMEL VASE

Signed Shuei for the Ando Company, Taisho/Showa

Of globular form decorated with flowering prunus and chrysanthemum on a ground textured with chidori amidst prunus branches, signed to base with Ando mark.

26.3cm diameter.

£500 - 600



13

14

A CLOISSONÉ ENAMEL VASE

20th century

Of globular form with everted rim and raised on slightly spreading foot, decorated to the front with three goldfish amidst weeds and further weeds to the reverse, all in musen technique, (glued chip near foot).

21.1cm high.

£500 - 600



14

15

A LARGE LACQUERED-PORCELAIN VASE AND COVER BY MOKUZA OF SETO

Circa 1900

The ovoid porcelain vase decorated with chidori and butterflies amidst maple branches in wire enclosed compartments akin to cloisonné, reserved on a textured simulated-wood ground, the domed porcelain cover with bud-shaped finial similarly decorated (losses to cover and finial), the interior mouth rim with formal patterned border in underglaze blue, inscribed to base, 'Seto Mokuza sei' (Made by Mokuza in Seto).

67cm high. (2).

£300 - 500



15

16

AN ENAMELLED EARTHENWARE VASE

Circa 1900

of baluster form and decorated with cranes in flight on a turquoise 'netted' ground, character marks in red.

24cm high

£500 - 700

17

TWO PAIRS OF SATSUMA BALUSTER VASES

By Kizan, Meiji era

The larger pair of hexagonal-section at the shoulder decorated with two panels of ladies beneath bamboo and magnolia trees, reserved on a gilt and blue ground, signed to base, 31.4cm high; and a smaller pair of circular-section bearing similar decoration, signed to base, (one glued repair to rim), 19cm high.

(4).

£250 - 350



18



21

18

A LARGE SATSUMA SHELL-SHAPED DISH

Meiji era

Modelled as an abalone shell, the interior enamelled with three samurai, the spiral rim decorated with brocade patterns, the reverse naturalistically painted and encrusted with applied barnacles and other sea shells forming four supports.

31.9cm long, 7.9cm high.

£800 - 1,000

19

A GROUP OF BLUE AND WHITE, SATSUMA AND ENAMELLED CERAMICS

Comprising four various dishes in the Nabeshima style: a pair in blue and white depicting lotus flowers, *20.2cm diameter*, an underglaze blue and over-glaze enamel example with basket of flowers, *19.7cm diameter*, another similar with fruiting branches, *18cm diameter*; a decagonal bowl with Imari decoration, and a similar circular example, *15cm diameter*; a graduated pair of bowls featuring a European figure in enamels, *larger 17cm diameter*; two blue and white pin dishes, a Ko-Kutani decorated saucer dish, *25cm diameter*; an undecorated Satsuma koro and cover, with pierced fan-shaped panels and domed cover, internal liner, signed, *12.5cm high, and with presentation box*; a baluster vase with flaring neck and landscape panels between four flanges, *22cm high*; a pin dish and a small paste box and cover. (qnty).

£300 - 500

20

A MEIPING VASE

20th century

Decorated in a Korean Joseon-style in white and black on a celadon ground with cranes in roundels over a lower register of upright pointing leaves, marked Mitsui.

33cm high.

£300 - 500

21

A SOMETSUKE SETO VASE

By Kawamoto Masukichi, Meiji era

Of baluster form painted all over in underglaze blue with flowering prunus, irises and chrysanthemums, above a key-fret band at foot, signed to base.

27.5cm high.

£800 - 1,200

22

A PAIR OF IMARI CHARGERS

19th century

Each decorated with a central vase issuing flowers within radiating figural panels.

58cm diameter.

£400 - 600



23

23
A BRONZE OKIMONO OF A LION

By Kazumasa, Meiji era
 A naturalistic study of a young lion, the muscular body in a recumbent pose with forepaws crossed to the front and long tail curled to one side, signed to base in a rectangular reserve *Kazumasa kinzo* [respectfully made by Kazumasa].
 42cm long.

£800 - 1,200

24
A RELIEF DECORATED BRONZE VASE

By Yukiharu, Meiji era
 Of oviform and decorated in low relief with five geese in flight before a full moon and over flowering bamboo, three further geese to the reverse, details in gold and silver, inscribed to the body, *Yukihara living in Awata*, (base drilled).
 34.5cm high.

£800 - 1,200



24

25
A MENPO (HALF MASK)

Edo period, 19th century
 The *ryubu*-style mask in iron lacquered with *sabinuri*, the detachable nose with red lacquer upper lip and a hair moustache. The wide mouth with gilt metal teeth and the cheeks with *odayori-no-kugi*, a four lame *yodarekake* (throat guard) laced in dark blue *kebiki odoshi*.
 21.5cm high.

£250 - 350

26
A PAIR OF BRONZE BALUSTER VASES AND A SINGLE EXAMPLE

Meiji era
 The pair each decorated in high relief with a dragon amidst clouds, signed 'Yoshida of Kyoto' to base, 25cm high; the single vase portraying two swimming carp in relief on patinated ground, signed in archaic circular seal mark to base.
 30.5cm high. (3).

£250 - 350



26 (part lot)



27

27

TWO BRONZE OKIMONO OF BIJIN

Both by Wacho, Meiji era

The first a musician dressed in kimono, geta and straw hat, standing and playing a shamisen, 34.5cm high; the second a young girl walking with her large straw hat over one arm, 34cm high, both signed to base.

(2).

£400 - 600



27

28

A BRONZE FIGURE OF AN ELDERLY MAN ENGAGED IN YOMAWARI (NIGHT WATCHING)

Meiji era, late 19th/early 20th century

Standing slightly bent over with *hyoshigi* (wood clappers) clutched in each hand and a paper lantern tucked into his belt, his mouth wide open calling out '*hino yojin*' (beware of fires); *unsigned*. 33cm high.

£300 - 500

29

A BRONZE BOX AND COVER

Meiji era and later

Of rectangular form, the detached cover formed by five various *kozuka* with gold and copper inlays, depicting a snail, flowers, musicians, a giant carp and a dragon, a pair of *menuki* of a boy riding a carp decorate the long sides of the box, the short sides incised with flowering plants.

9.5cm long. (2).

£500 - 600

Provenance

Major James Findlay (1915-1990) collection, Aberdeen, acquired 1950s-1960s; and thence by descent.

Sold to benefit Archway, a respite care and housing charity in Aberdeen, charity no. SCO14665.



28



29



30

30

AN INLAID IRON BOX BY KOMAI SEIBEI AND A DAMASCENED EXAMPLE

Meiji era

The first of circular form with detached cover decorated in gold *nunome-zogan* with a temple within a band of leaves, the sides of cover and body with key-fret and leaf bands, the interiors gilt and incised with designs of kingfisher below wisteria and a pair of ducks, the base silvered and incised with hibiscus and the seal of Komai Seibei, raised on four low bracket feet, 7cm diameter; together with another box of hexagonal form, the hinged cover with a fighting dragon and phoenix, the sides with chidori amidst wisteria and a pavilion in landscape, the interiors gilt and incised with a continuous scene of birds below pine, double-mountain mark and 'K.24 GOLD' to base, raised on low tripod supports. 10.6cm wide. (3).

£500 - 700



31

31

A RELIEF-DECORATED SILVER BOWL

Meiji era, late 19th/early 20th century

Of double walled construction and decorated to the exterior with a dragon above waves and below clouds, impressed mark to base 'Jungin', pure silver, (old solder repairs).

20cm diameter, weight 18.8oz, 588g

£500 - 700

32

A BRONZE ELEPHANT-FORM INCENSE BURNER AND COVER

Meiji Period

Modelled standing four-square, with its head and trunk raised, elaborately caparisoned and with a plinth and pagoda atop the back with a coiled dragon crowning the top.

44cm high (2).

£500 - 700



32



33



35

KAWASE HASUI (1883-1957)

Taisho era, 1932
An oban yoko-e print entitled *Satsuki ame, Arakawa* [May Rain, Arakawa], dated Showa 7.6 [June 1932], signed Hasui with red circular seal.
Image 36cm x 23.5cm.

£500 - 800

34

KAWASE HASUI (1883-1957)

Snow at Zojoji Temple, Shiba, 1925
A bijin with an umbrella walks in the drifting snow in front of the temple, from the series *Twenty Scenes of Tokyo*, published by Watanabe.
Image 37cm x 25.5cm, and framed and glazed.

£400 - 600

35

MIZUNO TOSHIKATA (1866-1908)

An album of woodblock prints
A complete set of the fifteen prints and table of contents for the series *Chanoyu hibigusa* (Daily practice of the tea ceremony), 1896, published by Akiyama Buemon, printed with silver and black lacquer pigments and embossed details.
Each oban 36cm x 24.5cm.

£300 - 500

36

THREE TRIPTYCH OF WOODBLOCK PRINTS

Chikanobu Yoshu (1838-1912)
Evening Cool in Fukiage from the series *Ladies in Waiting of the Chiyoda Palace*; a samurai procession carrying an old man in a wash tub *Okubo Hikozaemon carried to the Shogun's Castle*; a fight between the samurai Kishida Mitsunari and Shima Sakon performed by the actors Suketakaya Takasuke and Arashi Rikan.
Each oban 34.5cm x 24cm, and mounted together, framed and glazed. (3).

£300 - 400



36 (part lot)

37

AN ALBUM OF SHUNGA PRINTS

19th century

Bound in a silk-covered volume, comprising a double-page frontispiece and twelve woodblock prints of amorous couples. Each print 12.5cm x 28.6cm.

£500 - 600

38

A COLLECTION OF WOODBLOCK PRINTS

Utagawa Hiroshige (1797-1858), Utagawa Kunisada (1786-1864), and Utagawa Kuniyoshi (1797-1861)

Comprising: two oban *Edo meisho hyakkei* and *Rokujuyushu meishozue* together with a chuban from the *Tokaido* series (published by Tsutaya), all by Hiroshige; four oban of a bijin, two Kabuki actors, and the Chinese warriors Gentoku and Chohi, all by Kunisada; an oban of a kabuki actor on a veranda by Kuniyoshi; together with two facsimiles after Hokusai.

(10).

£500 - 600

39

A COLLECTION OF ORIGINAL AND REPRODUCTION WOODBLOCK PRINTS

Kitagawa Utamaro (1753-1806), Utagawa Yoshitora (active 1850-1880), Imao Keinen (1845-1924) and others

Comprising: two prints of ikebana flower arrangements by Utamaro, 30cm x 20.5cm; two oban *tate-e* of samurai by Yoshitora; an oban *tate-e* of chidori and flowers by Keinen; and seven various book illustrations by Hokusai, Seitei Watanabe, Hobun, Yoshitsune and Bairai; together with a reprint of Foxfires on New Year's Eve at the Shozoku Hackberry Tree by Hiroshige, and seven reproduction Hokusai prints from the Thirty-six Views of Mt. Fuji in two presentation folders.

(20).

£300 - 500



37

40

SIX SCROLL PAINTINGS

Comprising: Mount Fuji with woodlands to the foreground, ink on silk, inscribed Ko son and with two seals, 88cm x 33cm; Landscape with Scholar, colours on silk, signed Shogetsu sanjin and with two seals, roll inscribed Kikuchi Keigetsu, 49cm x 57cm; Woodcutter Crossing a Bridge, ink and colours on silk, signed Kokei and with seal, 45cm x 50cm, Sparrows in Plum Blossom and Bamboo, colours on silk, signed Tensho, 130cm x 51cm, Woodsmen in Mountainous Landscape, colours on silk, signed Tokuzaburo and with two seals, 45cm x 51cm and another in colours on silk, A Gathering of Immortals, signed Rijian, with inscription and seals. 101cm x 53cm

£500 - 700



41

41

A CARVED WOOD PANEL OF KANNON AND ATTENDANTS

Meiji Era, late 19th century

Carved in deep relief with the bodhisattva Kannon and flanking attendants amidst scrolling clouds, inset with a square seal mark in archaic script, all within a moulded frame with scrolling foliate details.

104cm x 71cm overall.

£1,500 - 2,000



43



44

42

A PAINTING OF MOUNT FUJI

By Ikegami Shuho, Taisho era
Ink and colour wash on paper, signed with red seal, and mounted as a hanging scroll.

Image 20cm x 40cm, and with wooden box.

£500 - 600

43

A LARGE CUT VELVET WALL HANGING

Meiji Era, 19th century
Executed in Yuzen-dyed *birodo* and depicting pavilions in a mountainous river landscape.

166cm x 240cm

£500 - 700

44

A LARGE SILK EMBROIDERY

Meiji Era
In landscape format and depicting three tigers in a river landscape, signed and with seal.

118cm x 182cm

£500 - 800

45

A FURISODE KIMONO AND OBI

The long-sleeved kimono with bold overall design of festival carts and fans amidst patterned clouds, in warm-coloured *yuzen* with silk and gold thread embroidery on black ground, *163cm long*; the obi in complementary orange tones with brocade designs of fans decorated with flowers and leaves, *336cm long*; and variously coloured cords and braids to accompany the outfit.

(6).

£500 - 700



45

South East Asian Art



46

46
A LARGE TURQUOISE-INLAID BRASS ALLOY FIGURE OF ELEVEN-HEADED AVALOKITESHVARA

Nepal, 20th century
 Standing on a lotus plinth, the eight-armed, eleven-headed Bodhisattva clad in clinging robes and turquoise-inset jewellery, each of the eight hands holding an implement. *62cm (24 3/4in) high*

£500 - 800



47

47
OLD CLARKE QUAY, SINGAPORE

Oil on panel, signed Tiong Tian Tong, dated '88
79cm x 120cm and framed and glazed

£200 - 300

Provenance:
 Purchased Singapore 2001

48
'FULFILLING THE DREAM' AND 'ANCIENT DREAM'

A pair of pastels signed Goo Chueng Hang, dated '99
68cm x 99cm and 74cm x 99cm and framed and glazed. (2).

£400 - 600

Provenance:
 Purchased Singapore 2000/01

49
A BRONZE HEAD OF BUDDHA AND OTHER ITEMS

The head with traces of gilding in the hair, *10.5cm high*; and five items, all early 20th century or later comprising: a soapstone figure of a Manchu noble, *16cm high*; a porcelain snuff bottle with the character 'Fu' for good fortune, *7.2cm*; a carved mineral miniature bottle, a miniature figure and a brass bell. (6).

£100 - 150

Provenance:
 Major James Findlay (1915-1990) collection, Aberdeen, acquired 1950s-1960s; and thence by descent.
 Sold to benefit Archway, a respite care and housing charity in Aberdeen, charity no. SCO14665.



50



51

50
A DARSHAN WEDDING SHAWL

East Punjab, India

The red-brown ground embroidered with two columns of figures standing within porticos, further jewellery and animal motifs to one end, within geometric borders, all in shades of yellow, green, purple, pink and black, cotton and flossed silk.

227cm x 122cm.

£700 - 1,000

Provenance:

The Collection of Alistair McAlpine. Sold at Bonhams Knightsbridge, 12 February 2008.

51
AN EWE CLOTH

Ghana

Strip woven with polychrome panels, in predominant shades of orange, yellow, blue, red and purple with supplementary motifs of birds, animals, hexagons and hour-glass shapes, cotton.

312cm x 134cm.

£800 - 1,200



53



53A

52

A PAINTED-BOARD SPICE CABINET

Indian, 19th century

The rectangular top above two doors hung on strap hinges opening to reveal two shelves above two small drawers, painted with cusped arches containing vases issuing flowers. *48cm high, 46cm wide, 33cm deep.*

£300 - 500

53

A KANDURI SHRINE CLOTH

Uttar Pradesh, India

The shrine flanked by warriors, figures on horses and elephants, in a carriage and a palanquin, all on a pale brown field, the dark blue borders decorated with figures below trees, appliqué cotton. *128cm x 126cm.*

£1,200 - 1,800

53A

A LARGE IZNIK POTTERY DISH

Circa 1600

Of deep rounded form raised on a short foot and with everted rim, decorated with carnation, rose and other flowers and leaves, the border with an undulating design consisting of foliate motifs and partial flowerheads, the reverse with further floral sprays.

34.5cm diameter.

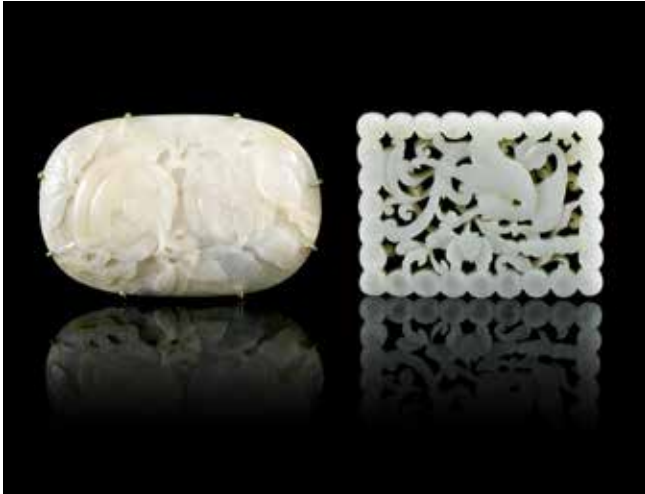
£800-1,200

Chinese Art

Lots 54-221



Jades & Hardstones



54

54

A RETICULATED GREEN JADE PLAQUE AND A CREAMY JADE 'MELONS' PLAQUE

Ming Dynasty and 18th/19th century

The first rectangular plaque carved in openwork with a swooping crane amongst a peony flower meander; the second oval plaque carved in low relief with two melons amongst a leafy vine.

The largest: 9cm wide (2).

£500 - 800

Provenance:

The oval plaque: Spink & Son Ltd., by repute

55 *

AN AGATE BRUSH WASHER

Bearing Qianlong four-character zhuanshu mark but 19th century

Of shallow circular form and raised on tripod feet, the mouth surrounded by pierced and carved branches supporting birds and a tree shrew (small breaks), *18.8cm wide, 4.5cm high*, together with a wooden stand.

(2).

£500 - 700

56 *

A ROSE QUARTZ INCENSE BURNER AND COVER ON STAND

19th century

The pierced domed cover with reclining lion-dog finial, the body of bombé form with twin mask-and-tongue handles and raised on tripod supports.

11cm high and on wooden stand. (3).

£500 - 800

57

A GREEN MINERAL BOWL, VARIOUS MINERAL DESK SEALS AND A BRONZE MIRROR

The bowl of mottled translucent and green stone, *10cm diameter*; a pair of carved soapstone desk seals with lion-dogs on square bases, *10cm high, and boxed*; a set of six half-pebble shaped seals incised with various landscapes and archaic seal bases, *6.5cm average height*; a jade archer's ring; and a circular bronze mirror with designs of cranes by a pond, *11.2cm diameter*. (qnty).

£250 - 350

58

A PALE GREEN JADE PENDANT PLAQUE ON WOODEN STAND

20th century

The rectangular plaque carved in low relief with a male Buddhist lion, his paw raised on a ball, and to the reverse with six characters in zhuanshu script, framed at top and bottom with cloud ornament.

Plaque 5.3cm high, 10cm high overall. (2).

£500 - 800



55



58



59

59

A COLLECTION OF SMALL JADE CARVINGS

Comprising: a barbed-rimmed circular plaque incised with an insect on flowering pomegranate within cloud border, in apple green translucent stone, old label 'J.W.' to reverse, 5.6cm diameter; two archer's thumb rings in apple green toned stone with naturally occurring ochre-coloured flaws, on wooden stands; a carving of a dog sitting on its haunches, in green stone with ochre tones; and a small apple-green and white seal carved as a lion-dog.

(7).

£600 - 800

60

A SOAPSTONE GUANYIN AND OTHER SOAPSTONE CARVINGS

The standing figure in loose robes and holding a scroll, standing on a lotus dais and upon a wood base section with lamp fittings, figure 40cm high, together with: two mountain carvings, tallest 22.5cm high; a fisherman with catch, 25cm high; a standing lady with fan, 25cm high and a pair of Buddhist lions.

9cm high

£300 - 500

61

A PAIR OF JADEITE BOWLS, AND OTHER CARVINGS

The bowls of mottled stone with russet and grey inclusions and upon wood stands, 8cm diameter; a green jade fish on carved wood stand, 6.5cm wide; a rectangular jadeite plaque carved to one side with three immortals and upon wood stand, 7cm wide; a green jade butterfly pendant, 9.5cm wide; a pair of miniature table screens with applied decoration on wood stands and an amber coloured glass Buddha.

8cm high

£300 - 500

62

A SOAPSTONE FIGURE OF A GUANYIN

Circa 1900

The goddess of mercy carved standing in flowing robes with a fly-whisk and vase in her hands, her expression serene and gaze downcast below an elaborately arranged chignon.

28cm high.

£300 - 500



62

Provenance:

from a long-established Scottish collection.

For details of the charges payable in addition to the final Hammer Price of each please refer to paragraphs 7 & 8 of the Notice to Bidders at the back of the cat



63

63

A JADE VASE

19th century

Of mottled green hue and of flattened octagonal-section, the flaring neck with twin key-fret handles and carved with wan characters and clouds, the body carved to one side in relief with a crane beneath a flowering peach tree and to the other with a spotted deer beneath pine tree, all raised on a hollow spreading foot.

15.4cm high

£1,000 - 1,500

Provenance:

from a long established Scottish collection.



66

64

A ROSE QUARTZ VASE AND COVER

19th century

Of flattened hu form with twin elephant-head handles, the carved with stiff-leaf band below key-fret pattern at rim, the body carved with opposing panels of songbirds amidst flowering prunus issuing from rockwork, the cover with matching key-fret and prunus below rectangular knop.

18.8cm high. (2).

£300 - 500

Provenance:

from a long established Scottish collection.



67

65

A SMALL JADEITE SEAL PASTE BOX AND COVER ON STAND, A HARDSTONE PENDANT AND A DESK SEAL

The box of straight-sided circular form with detachable cover, 5.1cm diameter, displayed on a hardwood stand, the pendant carved and pierced as shou character within a beaded border, 6.6cm high, the seal formed in mottled russet and green stone and carved with a chilong dragon, the base with four-character archaistic seal. 9.5cm high (3).

£300 - 500

66

A GILT-DECORATED SOAPSTONE CARVING OF THE LAUGHING LION LUOHAN

20th century

The figure of Xiaoshi Luohan modelled seated at ease leaning on a rocky outcrop, wearing loose robes, the right hand cradling a ruyi sceptre, the serene face with a moustache and a bald pate, with a small Buddhist lion playing below, silk-covered stand.

12cm wide (2).

£500 - 800

67

**A MOTTLED GREEN 'CLOUDS AND BATS' BOTTLE VASE AND
A GREY AND BLACK JADE PEACH-FORM BOX AND COVER**

Qing Dynasty, 18th/19th century

The first vase of elongated form unusually carved in high relief with swooping bats amongst clouds, associated wood stand; the second carved in low relief with ripe peaches issuing from leafy branches, the striated jade with creamy grey and black colours.

The largest: 13.5cm high (4).

£700 - 1,000

68

A GROUP OF HARDSTONE VESSELS

19th century and later

Comprising: a beige agate tripod stand carved with peony in high relief; a lapis lazuli 'Buddhist lions' vase and cover, carved with six beasts frolicking with a beribboned brocade ball; a leaf-form agate water pot; and a beige and orange agate water pot carved with prunus branches.

The largest: 12cm high (5).

£700 - 1,000

69 *

A SMALL GREEN JADE ARCHAISTIC SQUARE VASE

18th century

The square section vase raised on a small foot rim, the plainly carved surfaced embellished with *taotie* masks and lappets, flanked with scrolled handles, the stone of a pale celadon hue.

9.5cm high

£500 - 800

70

**A PAIR OF MALACHITE BALUSTER VASES AND COVERS WITH
ROSE QUARTZ STANDS**

19th century

Each flattened baluster vase carved in relief with branches issuing flowers, surrounded with small Buddhist lion cubs, the domed cover with a lion finial, raised on a separately carved rockwork plinth, carved hardwood stands.

Each: 16cm high (8).

£500 - 600

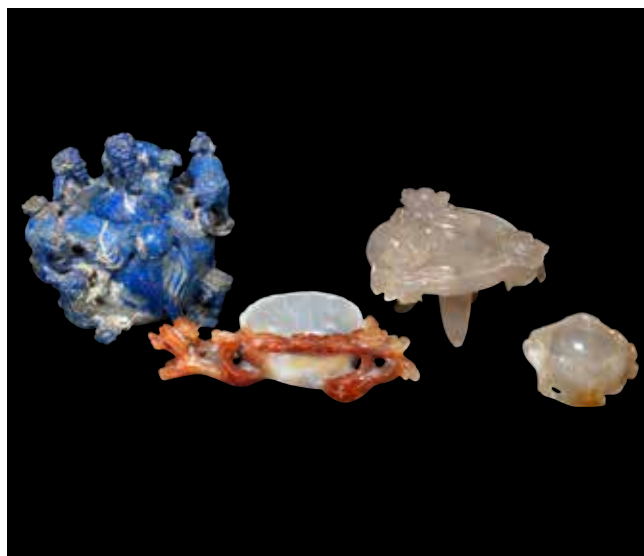
71

A JADEITE PENDANT AND A RING

The pendant carved in relief with fruiting gourds to each side, 3.8cm high, on a silver chain marked with import marks, the nine-carat gold ring set with a single cabochon stone.

(2).

£250 - 350



68



69



70

Snuff Bottles



72

72

A CLOISSONNÉ SNUFF BOTTLE

Qianlong seal mark but likely early 19th century

Of tall oviform and with stylised dragon masks to each side below a band of ruyi to the neck and scrolling foliage to the shoulders all on a gilt ground, with matching stopper.

7cm high. (2).

£300 - 500



74

73

A JADE 'PEBBLE' SNUFF BOTTLE

Of pale green hue with russet inclusions and of irregular faceted form, glass stopper.

5.5cm high. (2).

£250 - 350

74

AN INCISED BRONZE SNUFF BOTTLE

19th century

Incised with a dragon to one face only, the opposing side with a concave circular panel/snuff dish within an incised pair of encircling dragons, raised oval panels to the shoulders with floral motifs, the base with an apocryphal mark *Shunzhi junian Cheng Rongzhang zhi* (Made in the ninth year of the Shunzhi period by Cheng Rongzhang), jadeite stopper.

6.2cm high. (2).

£250 - 350

75

AN ENAMELLED YIXING SNUFF BOTTLE

19th century

The flattened circular bottle with raised panels and enamelled with landscape scenes, the sides with foliate motifs.

5cm high

£500 - 800



76

NINE INSIDE-PAINTED SNUFF BOTTLES

Including a rock crystal oversize example painted with a dragon amidst clouds, 6.5cm high, stopper; two overlay glass examples; a conjoined double bottle and five other examples, all bearing stoppers. (18).

£300 - 500

75

77 *

THREE BLUE AND WHITE SNUFF BOTTLES AND A MINIATURE VASE

19th century

The first of rounded square section, painted to each side with a panel of a sage or lady, reserved on a floral ground, bearing a four-character *shen de tang zhi* mark [Hall for the Cultivation of Virtue], 8.5cm high, stopper; the second a cylindrical example painted with a continuous scene of warriors and a sage in a landscape, bearing Yongzheng six-character mark, 7.5cm high, stopper; the third of spreading cylindrical form painted with warriors, with details in underglaze red, 7.2cm high, stopper; together with a miniature vase painted with overlapping panels of flowers, Yongzheng six-character mark, 4.2cm high. (7).

£500 - 700



77

78

FOUR VARIOUS SNUFF BOTTLES

A rock crystal example carved with bamboo, 5.5cm high; a mottled agate example carved with a fish to one side, a shrimp to the other, 4.5cm high; a green mineral example with iridescent inclusions and carved as an elephant, 6cm high and an inside-painted example with scene of boy with kite to one side and boy on buffalo to the other. 6cm high (4).

£800 - 1,200

Provenance:

Robert Rodgers (1922-1997), and thence by descent.

79

SIX PORCELAIN SNUFF BOTTLES

Four cylindrical examples including one in famille rose enamels depicting a parade of boys and bearing a Qianlong seal mark, 7cm high; a blue and white oviform example depicting scholar in garden and bearing a Guangxu four-character mark, 5.8cm high, stopper and a copper-red enamelled oviform example enamelled with a dragon to one side and a phoenix to the other. 6.2cm high (7).

£250 - 350



78

80

NINE VARIOUS GLASS AND AGATE SNUFF BOTTLES

An oviform agate example carved to one side with a fisherman on a boat, 5cm high; another similar carved to one side with a Buddhistic lion, 5.5cm high; a mottled agate example with tiger's eye domed stopper, 5cm high; a simulated realgar glass example, 6cm high; together with four other various glass examples, all with stoppers. (9).

£300 - 500

81

A RED OVERLAY-GLASS SNUFF BOTTLE AND A FACETED AGATE SNUFF BOTTLE

18th/19th century

The first flattened 'snow storm' glass bottle carved with a bright red overlay with lotus and prunus flowers; the second beige agate bottle of octagonal form.

The largest: 6cm high (2).

£500 - 800



81

Works of Art



82

82

A COLLECTION OF METALWARES

Various dates

Comprising: a silver inlaid Japanese incense burner in the form of Hotei resting on his bag of wealth, 18cm wide; a Chinese bronze seal of square-section surmounted with a Buddhist lion, archaistic seal to base, 7.3cm high; an Indian white metal enthroned figure of Ganesh, 6cm high; a Tibetan figure of the wrathful deity Mahakala, 5.5cm high and a Tibetan box of circular form with relief foliate decoration to the detachable domed cover, a tiger amidst foliage below. 9cm diameter. (6).

£1,000 - 1,500

Provenance:

Robert Rodgers (1922-1997), and thence by descent.



83

83

A CLOISSONNÉ ENAMEL TRIPOD INCENSE BURNER AND COVER

19th century

With dragon and pearl-form handles, seated Buddhist lion finial and lion mask terminals to the cabriole legs, decorated with lotus flowers and scrolling foliage below a border of lappets and ruyi motifs to the neck.

14cm high. (2).

£500 - 800

84

A HUANGHUALI SCHOLARS' DESK BOX WITH COVER

19th century

Of rectangular form with sliding panelled top.

4.6cm high, 18cm wide, 19.4cm deep

£300 - 500



85

85 Y

A PAIR OF HUANGHUALI ARMCHAIRS

Republic period

The stepped top-rails above a carved and pierced key-fret back splat with central circular shou character below ribbon-tied ruyi motifs, the curving armrests on carved and pierced longevity symbols above shaped seats, all over shaped aprons with further carved scroll details leading to robust square-section supports and scroll-carved feet, joined by stretchers.

92.5cm high, 56.5cm wide, 49.5cm deep (2).

£1,500 - 2,000

86 *

A COLLECTION OF MOTHER-OF-PEARL GAMING COUNTERS

18th/19th century

Of various sizes and incised designs, including rectangles, circles, stars, elephants, cats, donkeys and fish; approximately 220 examples.

£400 - 600

87

A PAIR OF CARVED CINNABAR 'SAGES' LACQUER DISHES, TWO CARVED LACQUER-INSET TABLE SCREENS, AND A PAIR OF CIRCULAR DISHES

19th/20th century

The first pair each of waisted rectangular form with canted corners, deeply carved with different scenes of scholars below a pine tree, incised lotus motifs to reverse and raised on short foot, *9.5cm long*; the first screen panel carved as an Immortal riding on a lotus leaf above churning waves, mounted in a scrolling-pattern pierced wooden frame, *total height 16.6cm*; the second worked as two scholars in a landscape in two-colour lacquer, in scrolling-pattern frame and raised on a matching pierced wooden stand, *total height 18.2cm high*; the pair of circular dishes both carved all over with large lotus flowers and foliage, *16.3cm diameter*.

(7).

£600 - 1,000

88 *

A PEKING GLASS BOWL

Bearing Qianlong seal, 19th century

Of globular form with tree-shrews amidst fruiting vines in green overlay on white glass, incised four-character mark to base.

13cm diameter.

£300 - 500

89 Y

A CANTON EXPORT CARVED TORTOISESHELL BOX AND COVER, A SET OF GAMING COUNTERS AND A CANTON ENAMEL BOX AND COVER

19th century

The circular box deeply carved with typical designs of figures amidst architecture and foliage, *9.5cm diameter*; the mother-of-pearl counters in original fitted box, consisting of seventy-six rectangular, *5cm wide*, twenty-one short rectangular, *3.5cm wide*, thirty-nine circular, *3cm diameter*, and three fish-shaped tokens; together with a lobed circular box and cover enamelled with a circular panel of a scholar and attendant reserved on a scrolling-lotus pink ground, *7cm diameter*. (qnty).

£300 - 500

90

A LACQUERED ELM PAINTING TABLE

Qing Dynasty

The square top constructed from planks and raised above a shaped apron with corner brackets and 'hump-backed' stretchers joining the circular-section indented corner supports.

82cm high, 98cm square.

£500 - 700



87



89 (part lot)



90



91

91

A SAILOR'S 'PRIVATE TRADE' RECORD BOOK

Dated 1845

Named and dated to the inside cover Edmund Gibson/1845 and containing around 25 individual inserted Chinese Shop 'chops' or receipts for mainly purchases of silks. Hand annotated notes alongside the various inserts give some details of possible prospective purchasers. Also included are four folded paper envelopes containing silk thread samples.

16.7cm x 10.5cm (5).

£200 - 300

92 Ω

A LARGE LACQUER BOX AND COVER

Mid 20th century

The detachable square cover painted with a figure scene within key-fret border, further similar scenes within diaper frames to sides, bright colours and gilt on black ground.

38cm x 38cm x 15.5cm. (2).

£300 - 500

93 Y

A HUALI KANG TABLE

Qing Dynasty, late 19th century

The rectangular top with inset single 'floating panel' over a plain frieze and above a fish-belly apron with carved scroll details, raised on square-form supports with cloud carved feet.

27.5cm high, 76cm wide, 41cm deep.

£150 - 200

94

A CARVED ALABASTER BUST OF GUANYIN

Late 19th century

Finely carved with a serene expression, eyes downcast, her hair swept up into an elaborate headdress.

32.5cm high, and with an ebonised wood stand. (2).

£250 - 350

95

A COLLECTION OF MOTHER-OF-PEARL GAMING COUNTERS

19th century

All in a cylindrical wooden container with incised geometric designs, 17.5cm high; comprising: four monogrammed discs, two various pierced rectangular tokens, twenty-three foliate rimmed circular examples, fifty-one various sized circular tokens, sixty-six fish-shaped counters, and one oval example.

(qty).

£200 - 300

96

A GROUP OF CARVED PEACH-STONES

19th century

One carved as a boat with various figures upon its decks and within opening side doors, (one door lacking), engraved beneath with long inscription, 4cm long; three others also carved as boats of similar size; one carved as entwined sea creatures; one as snake and fish amidst reed; a conch shell; various half-shells with two forming pairs and a sting of beads formed from other nuts, clay and wood.

(qnty).

£800 - 1,200

Provenance:

Robert Rodgers (1922-1997), and thence by descent.



94



96 (part lot)



99



100

97
TWO MARBLE TOPPED BLACKWOOD JARDINIÈRE STANDS

19th century
The larger with a circular top inset with rouge marble within a gadrooned edge over a pierced waist and carved and pierced fruiting vine apron, raised on mask and tongue supports with further carved details and joined by stretchers ending in ball and claw feet, 71cm high, the smaller with a shaped marble insert to the square top over a pierced waist and bird and prunus apron raised on foliate carved cabriole supports joined by a cross-stretcher. 48cm high (2).

£400 - 600

98
A PAIR OF LACQUERED ELM STOOLS

19th century
The square tops with inset 'floating panel' and raised on square-section supports joined by stretchers terminating in hoof feet. 51cm high, 55cm square

£400 - 600

99
A PEKING GLASS SHALLOW BOWL

19th century
The flat rim with cloud pattern in relief, a bi-disc with eight Buddhist emblems to centre of well, the exterior with radiating petals, of pale green hue akin to jade. 22cm diameter.

£500 - 700

100
A CELADON WATER POT LATER MOUNTED AS AN INKWELL

Porcelain 18th/19th century
The oviform vessel with applied brown mouth rim and showing both large and small crazing within the pale green glaze, with a later added gilt-metal ink well and hinged cover bearing an agate finial carved as a cockerel and circular base on four paw feet inscribed NICHOLAS HAYDON/8 WEST 56th ST. N.Y.C. Porcelain 6.5cm high, overall height 13.5cm high.

£300 - 500



101

**101
A TWO-FOLD BLACKWOOD FLOOR SCREEN WITH SILK
PANELS**

Qing Dynasty
Each side with a carved and pieced pediment depicting a front-facing coiling dragon over a glazed panel housing paintings on silk of cloisonné vases issuing prunus, lotus, chrysanthemum and other blooms over lower pierced and carved panel depicting two confronting dragons amidst clouds.

Each side 144cm high, 46cm wide.

£3,000 - 5,000

**102
A BLACKWOOD TEA TABLE**

Late 19th century
The square top with inset marble panel within a carved prunus border and gadrooned edge, the waist carved with lotus design above an apron carved and pierced with fruiting peach, raised on corner mask and tongue cabriole supports with further carved details and joined by an undertier with a further apron carved and pierced with prunus.

44cm square, 81cm high.

£500 - 800

103

A PAIR OF GILT-DECORATED CAST-IRON BUDDHIST LIONS

Each modelled seated on its haunches, the male with front paw raised upon a brocade ball, the female with front paw upon a pup. *25cm high. (2).*

£500 - 700

104

A BLACKWOOD MINIATURE TABLE

Qing Dynasty
The circular top with a moulded rim over a shaped carved and pierced apron, raised on five c-scroll supports with encircling ring and on a circular stretcher raised on bracket feet.

16.2cm high, 16.2cm diameter.

£500 - 700



105



107

105

A HUANGHUALI WINE COOLER ON STAND

Qing Dynasty

The detachable top in two halves with one side bearing pierced cash symbols, the vessel below with original lead liner and bound to the exterior with two rows of 'faux-bamboo' bronze bands and fitted to two sides with twin pairs of ring handles, all raised on a robust base section with curving supports ending in ball and claw feet and joined by a floor stretcher.

56.5cm square, 70.5cm high.

£4,000 - 6,000

106

A CANTON ENAMEL TEA BOWL AND SAUCER, LATER MOUNTED AS A TAZZA

19th century

The brightly enamelled saucer decorated with birds and flowers, forming the well upon which three gilt metal birds perch, a kneeling and winged cherub forming the gilt metal stem, the matching upturned bowl becoming a domed foot over a gilt metal rim.

16.5cm high.

£300 - 500

107

A LARGE SANCAI-GLAZED RELIEF DECORATED POTTERY PLAQUE

Ming dynasty

Depicting two opposing warriors on horseback before rockwork, accompanied by a purpose made steel display stand.

Plaque 50cm high x 62cm wide.

£800 - 1,200

108

A BLACKWOOD INCENSE BURNER STAND

Qing Dynasty

The square top with inset marble top over a frieze carved in low relief with central lotus flower and scrolling foliage extending to the corner supports ending in reeded feet and joined by stretchers.

36cm square, 120cm high

£500 - 700



108



109



110

109
A BLACKWOOD WALL TABLE WITH SIDE DRAWERS

Qing Dynasty
The rectangular top with inset wood panel above a front apron and side corbels carved with scrolling archaistic key pattern designs, each short end fitted with a drawer similarly carved, the reverse plain, raised on square section supports with moulded edges ending in scroll carved feet.
88.5cm high, 118cm wide, 52cm deep.

£4,000 - 6,000

Provenance:

Christie's London, 12 May 2016, lot 344. The Dani & Anna Ghigo Collection.

110

A CARVED BAMBOO 'ARHATS' BRUSH POT

Late Qing Dynasty
The cylindrical vessel carved in low relief to the exterior with three bearded holy men, amongst pine trees and rock work.
15.5cm high.

£700 - 1,000

111

A GROUP OF THREE GILT-FILIGREE HARDSTONE-INSET BELT BUCKLES

Qing Dynasty
The first with an oval rose quartz plaque carved with a maiden, flanked with agate fruit carvings; the second of similar form but smaller and with plain plaques; the last belt slide with a *ruyi*-head shaped suspension, with a thumbprint agate central cabochon.
The largest: 13cm wide. (5).

£500 - 600

112

A SILVER SNUFF BOX, A CIGARETTE CASE AND ANOTHER SNUFF BOX

Early to late 19th century
Comprising: a rectangular box and cover with repoussé worked lid and base decorated with floral motifs, stamped MK; an oval boat-form box with a hinged lid incised with a dragon and a monogrammed crest; a repoussé cigarette case decorated with birds and flowers.
The largest: 12cm wide. (3).

£500 - 600

For three similar silver snuff boxes, dated 18th and early 19th century, and a brief discussion on the unknown maker 'MK', see the John Sparks exhibition catalogue, A.J. Marlowe, *Chinese Export Silver*, London 1990, p. 45, no. 29, 33 & 90.



115

113

TWO EXPORT SILVER-MOUNTED WALKING CANES,

19th century

The first with flaring silver handle embossed with figures in a river landscape, on a gnarled shaft, *92cms long*, together with another with a flaring handle decorated in similar fashion with figures in a landscape, on a lacquered malacca shaft. *81cms long*.

£200 - 300

114 Y

A HUANGHUALI BRUSH POT

Qing Dynasty

The cylindrical pot with a very subtle waist, rising to a flat mouth rim, the timber of a warm, honey colour and with a typical figured grain. *18.5cm high*.

£500 - 800

115

A FINELY EMBROIDERED AND PAINTED SILK PANEL

19th century

Two ladies arrange flowers while boating on a lake beside a terraced garden, a third lady looks on from a pavilion below a willow tree filled with birds, with an embroidered inscription and seals, all worked in coloured silks with painted faces, mounted in carved and pierced wooden frame.

Panel 53.5cm x 40.5cm, frame 68cm x 54.5cm.

£1,000 - 1,500



114



116

116

A LARGE AND IMPRESSIVE SILK EMBROIDERY

19th century

Embroidered with a large central coral-coloured lotus flower with bats and musical stones at the cardinal points, surrounded by scrolling foliage and further blooms in a dense symmetrical pattern, within stylised key-fret frame, all on a yellow-green ground.

183cm square.

£1,500 - 2,000

117

AN EMBROIDERED WALL HANGING, A MANDARIN RANK BADGE AND ANOTHER EMBROIDERED TEXTILE

19th/20th century

The first with padded and applied embroidered and painted elements on red silk ground within black silk frame, the designs comprising bats and shou, boys riding toads and ducks and peony and dragonfly, all framed by braid and black silk cloud-forms, *187cm x 86cm*; a first rank civil Mandarin square of a crane within wan-pattern border, all in brocade with embroidered elements, *20cm x 18.6cm*; a mirrored pair of uncut panels of pheasants perched on magnolia and fruiting stems, *38cm x 33.5cm*.

(3).

£200 - 300

118

AN EMBROIDERED WAISTCOAT WITH MANDARIN RANK BADGE, AN EMBROIDERED DRAGON SKIRT AND A WEDDING JACKET

19th and 20th century

The waistcoat embroidered with dragons above waves, with further motifs of cranes, butterflies and peony, on black silk ground with blue brocade borders, *91cm long*, the front and back with applied second tier military Mandarin square badges with a lion in couched gold thread, *each 27cm x 28cm*; a wedding jacket with similar dragons and peony embroidered designs, in coloured silk and couched gold thread on dark coral-coloured silk ground, *104cm long*; and a wrap-around pleated skirt embroidered with dragon roundels and bands of dragons over waves at hem and waist, with gold brocade borders, *99cm long*.

(3).

£800 - 1,200

119

A TEAL-GROUND SILK EMBROIDERED ROBE

19th century

Woven with butterflies amongst scattered flower baskets and blossoming and flowering stems; together with a pair of 'lotus' shoes; and a cream silk embroidered roundel.

The robe: 135cm long (4).

£1,000 - 2,000

120

A PAIR OF EMBROIDERIES OF BIRDS

19th century

Each depicting a phoenix, crane, duck and song bird surrounded by roundels amidst peony, prunus and magnolia issuing from rockwork, within dragon border, in silk and couched gold thread on cream silk brocade.

30cm x 20cm, and framed and glazed. (2).

£200 - 300



118 (part lot)



119 (part lot)

121

AN EMBROIDERED PANEL OF BIRDS

20th century

Depicting the sun rising over pine and prunus trees with various birds including an eagle, peacock, cranes, chickens, ducks, peasants and song birds, all in brightly coloured silks.

54.5cm x 33cm, and framed and glazed.

£200 - 300

122

A BRONZE ARCHAISTIC TWO-HANDLED VASE

Qing Dynasty

The flattened vase cast with two bands of archaistic *taotie* masks and *leiwen* diaper, flanked with beast mask loop handles, raised on a tall foot and with a deep brown patination.

30cm high.

£500 - 800

123

A LARGE BRONZE MIRROR

19th century

Of circular form and cast to the underside with central boss within four characters, Buddhist emblems, mythical creatures, figures at various pursuits and other emblems.

36cm diameter.

£300 - 500

124

A BRONZE INCENSE BURNER MODELLED AS A WATER BUFFALO

Qing Dynasty

The beast modelled recumbent and with applied flanges to side and back, the head and back forming detachable cover.

15cm wide, weight 870g. (2).

£400 - 600

125

A BRONZE INCENSE BURNER

Xuande seal mark but later

Of typical bombé form with twin loop handles and raised on three tapering supports, bearing unusual elongated five-character seal mark to base, traces of gold-splash decoration.

13cm diameter, weight 1050g.

£500 - 600

Provenance:

an English private collection.

126

A PARCEL-GILT AND PAINTED BRONZE FIGURE OF A BODHISATTVA

Ming Dynasty

Seated side-saddle on a caparisoned lion with the left leg folded over the right, the Bodhisattva wearing a thickly folded dhoti painted red and green, the chest bedecked in beaded jewellery, the right hand resting with palm upturned over the left foot, the left held aloft in a mudra, with a lotus at each shoulder supporting an implement, the face, chest, hands and feet gilt covered, the elaborate tiara with red and green pigment.

27cm high.

£400 - 600



124



125



126



127

127

A BRONZE ARCHAISTIC-STYLE BALUSTER VASE

19th century

Decorated with an applied chilong dragon to the shoulder on an all-over stylised diaper ground with cloud scrolls in relief.

32cm high

£300 - 500



128

128

A BRONZE TRIPOD INCENSE BURNER AND COVER

19th century

Of oval section, the cover with reclining boy finial and pierced apertures, the vessel with twin chilong dragon handles and decorated with cloud-shaped design within prunt border, all raised on three bracket feet.

10cm high, weight 486g. (2).

£300 - 500

129

A BRONZE TRIPOD INCENSE BURNER

Xuande six-character mark but later

Of bombé-form and raised on three tapering supports, the everted mouth-rim with two small loop handles.

9.5cms high, 14cms diameter, weight 1010g.

£300 - 500

130

A BRONZE BODHISATTVA

Sino-Tibetan

The Buddhist deity dressed in crown, jewels and flowing scarves, seated upon a double lotus dais, the hands held together with interlaced and raised fingers in an unusual 'sword' mudra associated with Manjushri.

31cm high, and with wood stand. (2).

£1,000 - 1,500

Provenance:

a Scottish private collection. By family repute purchased in the early 1900s by the current owner's Grandfather.



130

131

A SMALL BRONZE ARCHAISTIC INCENSE BURNER

18th century

Modelled after a Western Zhou Dynasty bronze ritual vessel, *gui*, the globular body raised on a short foot rim, with a band of stylised *chilong* below the everted mouth, the body flanked with beast mask loop handles.

12cm wide

£700 - 1,000

132

A BRONZE TRIPOD INCENSE BURNER

Xuande four-character mark, Qing Dynasty or later

The globular bombé-form body rising to a gently everted mouth rim cast with upright loop handles, all raised on three pointed feet.

16.5cm wide

£500 - 700

133

A BRONZE INCENSE BURNER

19th century

Modelled in two parts as a Ming-style warrior on horseback, the horseman forming a detachable cover, (hand lacking).

19.5cm high. (2).

£300 - 500

134

A BRONZE FIGURE OF WEITUO

The Buddhist guardian dressed as a warrior in armour over flowing robes, the palms pressed together in reverent *anjali mudra*, the face with a gentle expression beneath an elaborate winged helmet, and raised on wooden stand carved as heavenly clouds.

Total height 26cm. (2).

£800 - 1,200

Provenance:

a Scottish private collection. By family repute purchased in the early 1900s by the current owner's Grandfather.



131



132



134

Ceramics



136

135

A BLUE AND WHITE GINGER JAR AND COVER

Kangxi four-character mark but 19th century

The typical globular body painted with quatrefoil panels of flowers arranged with antique vases and stands, all reserved on a prunus and cracked-ice ground, the cover with further prunus and cracked-ice pattern.

27.8cm high. (2).

£400 - 600

136

TWO BLUE AND WHITE 'PRINCE OF WALES' TUREENS, ONE WITH COVER

18th century

Each vessel of deep oval form with twin applied mask handles with rising crown of three feathers, and painted with double peacock pattern, (each with one wire-repaired handle), 29cm wide; the cover with symmetrical designs of flowering plants, with replacement metal finial, total height 22cm high.

(3).

£400 - 600

A near example shown in Treasures of Chinese Export Ceramics from the Peabody Essex Museum, by Rose Kerr and William Robert Sargeant, 2012: item 50, Tureen and Stand, 1770-1790.

137

A PAIR OF LARGE BLUE AND WHITE TUREENS WITH COVERS, AND A MATCHING MEAT PLATE

18th century

Each elongated octagonal tureen with twin lotus pod handles, painted with figures in landscape of pavilions and willow trees, (damages).

Tureens 33cm wide, plate 36cm wide. (5).

£300 - 500



140

138

THREE BLUE AND WHITE GINGER JARS

19th century

Each of globular form painted with peasants in a riverside village landscape, one with twin metal fittings at shoulder.

22cm high. (3).

£300 - 500

139

A VEGETABLE TUREEN AND COVER AND OTHER BLUE AND WHITE PORCELAINS

18th century

The elongated octagonal tureen with twin entwined vine handles, painted with figures in landscape, 19cm wide; a matched stand, 25.5cm wide; a set of three graduated octagonal bowls decorated with lotus and other flowers, largest 10cm wide; a scallop shell-shaped salt, 7.8cm long; a trencher salt decorated with bamboo and flowers. 7.7cm wide.

(8).

£300 - 500

140

A BLUE AND WHITE 'EIGHT HORSES OF MU WANG' BOWL

Kangxi

The interior well painted to the centre with a simple landscape, the exterior with a continuous scene of the eight horses amidst rocky outcrops and a willow tree, bearing underglaze mark to base partially obscured by old collector's labels, (restored rim chip and hairline).

15.9cm diameter.

£700 - 900



144

141

TWO BLUE AND WHITE JARS WITH COVERS

19th century

The first with a porcelain cover and decorated all over with prunus on a fish-scale ground, 26cm high, the second with carved and pierced wood cover and stylised lotus designs. (4).

£300 - 500

142

A PAIR OF CRACKLE-GLAZED SLEEVE VASES

19th century

Each of cylindrical form with everted rims, painted with birds and butterflies among fruits and flowers in cobalt blue under a crackle glaze, dark biscuit bands at foot and mouth, Chenghua four-character mark to base. 31cm high. (2).

£500 - 700

143

VARIOUS PORCELAIN BOWLS

18th and 19th centuries

Comprising: a blue and white example painted with scholar in landscape to well and panels of figures and landscapes to the exterior, Kangxi mark but 19th century, (hairline), 18cm diameter; a blue and white prunus decorated example, 18.4cm diameter; a Kangxi period blue and white lotus decorated bowl with café-au-lait exterior, 16cm diameter; a blue and white bowl with fruiting branches, 14.2cm diameter; an 18th century blue and white landscape bowl, 15cm diameter and another smaller; two 18th century Imari bowls, (damages), largest 15cm diameter; and a tea bowl with lotus designs in red and green. 11cm diameter. (9).

£250 - 350



147

144

A BLUE AND WHITE JAR WITH WOOD COVER AND STAND

Kangxi period

Of baluster form and painted with a continuous scene of courtiers on a terrace, (hairline at neck), the domed wood cover with carved and pierced designs and raised on a carved and pierced wood stand. Jar 24.5cm high. (3).

£800 - 1,200

145

A BLUE AND WHITE JAR WITH WOOD STAND

Kangxi period

Of ovoid form and painted with a song bird on rockwork issuing tree peony, another bird in flight. Jar 20.8cm high (2).

£400 - 600

146

A MIRRORED PAIR OF BLUE AND WHITE GINGER JARS AND COVERS

19th century

Each painted with a pair of song birds flying amidst bamboo, flowering prunus and peony issuing from rock work, four-character mark to base (one cracked), and with domed cover, (one cover restored). 24cm high. (4).

£300 - 500

147

A LARGE BLUE AND WHITE AND FAUX-BRONZE BOTTLE VASE

19th century

The globular body painted with a narrative scene of generals arranged around a table and watching warriors playing the arrow vase game, the tall foot, shoulder and beast-mask handles slip-covered to imitate bronze fittings, reserved on an alternating grey and ochre glaze. 66.5cm high.

£500 - 700



148



149

148

A VERY LARGE FAMILLE ROSE BASIN

Mid 19th century

The wide rim decorated with a design of scrolling lotus and fruiting peach, the steeply sloping sides boldly enamelled with flowers, fruits and butterflies and the well with a roundel depicting courtiers on a terrace, further figures seen through a circular window within a pavilion.

47.3cm diameter.

£600 - 800

149

A FAMILLE ROSE PHEASANT

19th century

The mould-pressed bird brightly enamelled and modelled upon a rocky outcrop.

36cm high

£500 - 600



150

150

A CANTONESE EXPORT PORCELAIN BOWL AND DISH MADE FOR ZILL AL-SULTAN CHINA, DATED AH 1297/ AD 1879-80(2)

China, dated AH 1297/ AD 1879-80

The bowl of deep rounded form on a short foot, the dish of shallow rounded form, extensively enamelled in polychrome with lotus sprays on a blue ground, with cartouches depicting figural scenes alternating with cartouches depicting floral sprays and birds, divided by bands of trellis motifs, inscription filled roundels to the well of the dish and to the exterior of the bowl.

The dish 27.5 cm. diam. (2).

£800 - 1,200

Prince Masoud Mirza Yamin al-Dawla Zill al-Sultan was born to Nasr al-Din Shah and a commoner, so was not in line to the Qajar throne, which would be inherited by his brother, Muzaffar al-Din. He held the post of governor in various provinces of Persia, including Isfahan. For further information, see M. Bamdad, *Dictionary of National Biography of Iran*, Vol. 4, Tehran, 1966, pp. 78-100.

For a bowl and dish from the same set in the Chinese Porcelain Company Collection, see Daniel Nadler, 'Chinese export porcelain with Arabic inscriptions', *Antiques*, March 2000, p. 473, Pl. XVI.

151

A FAMILLE NOIRE SQUARE-SECTION VASE

Kangxi six-character mark but 19th century

The trumpet neck pierced and with applied moulded Immortals on clouds, above tapering square-sectioned and double-walled body, each side of the outer wall with applied moulded scenes of sages and peasants in a landscape with pierced diaper pattern sky, all enamelled in a famille verte palette on black enamel ground, incised Kangxi mark to recessed foot, (neck restored).

37.6cm high.

£500 - 800



152

152
A PAIR OF RUBY-GROUND FAMILLE ROSE LANTERNS

19th century
 Each of hexagonal section and barrel shape with flared and lobed rims, the bodies with reticulated key-fret and diaper patterned panels inset with quatrefoil panels of stylised birds against a background of scrolling flowers, and raised on separate bases similarly pierced and enamelled.
 39.7cm high. (4).

£500 - 800

153 *
A WUCAI GARLIC-HEAD VASE

Bearing Jiajing six-character mark but later
 Of pear-form decorated with dragons amidst flaming clouds above stiff leaf band and below bands of key-fret, scrolling lotus and lappet designs, in underglaze blue and enamel, horizontal Jiajing mark at mouth rim, all raised on a short and unglazed foot.
 22.7cm high.

£500 - 700

154 *
A PAIR OF GREEN-GLAZED DRAGON BOWLS

Bearing Qianlong six-character mark but later
 Each decorated in relief with a pair of dragons amidst scrolling peony below key-fret band at rim, the green glaze thinning to white over raised design, the reign marks in red enamel.
 16.4cm diameter. (2).

£500 - 700

155
FOUR PIECES OF FAMILLE ROSE TOBACCO LEAF PATTERN DINNER WARE

Qianlong
 Comprising a meat plate, 38cm wide, (repaired); soup plate, (repaired); dinner plate and side plate.
 (4).

£300 - 500



156

156
A FAMILLE NOIRE 'SHOU' TEAPOT AND COVER

19th century
 Forming an elaborate shou character silhouette and with a small figural panel to each side reserved against a pattern of scrolling flowers and foliage on black ground.
 23.5cm high.

£300 - 500

157
A LARGE FAMILLE VERTE BALUSTER VASE

Qing Dynasty
 Boldly enamelled with a magpie perched on a flowering magnolia tree.
 43.5cm high

£1,000 - 1,500



157



158

158

A GREEN-GROUND AUBERGINE-ENAMELLED AND INCISED 'DRAGON' BOWL

Daoguang six-character seal mark

Very finely potted with steep rounded sides rising to a slightly flared rim, supported on a short straight foot, intricately incised and enamelled in rich aubergine with a pair of ferocious five-clawed dragons depicted writhing amidst flame scrolls in pursuit of flaming pearls, above a band of raging fire at the foot, all against a vivid green ground, (four hairline cracks from rim).

11.2cm diameter.

£500 - 700

159

A FAMILLE ROSE PORCELAIN PLAQUE OF TWO BIRDS

20th century

A pair of song birds perched on flowering branches issuing from rockwork, poetic inscription and signed with seals, framed.

52cm x 34cm, including frame.

£400 - 600

160

A GREEN-ENAMELLED 'DRAGON' SAUCER DISH

Bearing a Qianlong seal mark

Enamelled at the interior centre with a medallion enclosing a green writhing five-clawed dragon and flaming pearl, all outlined in black enamel with white details, the underside decorated with foaming waves.

16.8cm diameter.

£2,000 - 3,000



160

161

AN UNDERGLAZE-RED POURING VESSEL

Yuan-style

The spout supported by a scroll-shaped bracket, the interior painted to the centre with a floral roundel, similar foliate frieze to exterior.

18cm wide.

£500 - 700

162

A 'MANDARIN' PATTERN PUNCH BOWL AND THREE OTHERS

18th century

The Mandarin pattern bowl, 25.5cm diameter; two decorated with figural panels in famille rose enamels and underglaze blue, larger 28.2cm diameter; and a petal-moulded blue and white example with alternating panels of ladies and boys, 23cm diameter, (damages throughout).

(4).

£300 - 500



165

163

A COLLECTION OF POLYCHROME-ENAMELLED PORCELAINS

18th/19th century

Comprising: a 'Valentine pattern' saucer, three marquise-shaped spoon trays, two graduated circular bowls, three Mandarin pattern cups, two similar tea bowls, a rice bowl cover and four other tea bowls, a barbed rimmed dish raised on a pierced foot, and a set of six famille rose on celadon side dishes, (damages throughout).

(23).

£250 - 350

164

TWO EWERS WITH COVERS

18th century

The first with high-domed cover and ridge-edged spout, the body decorated to both sides with a crane in a garden beside a large flowering peony in famille rose enamels, (metal repairs to handle), *25.5cm high*; the second painted with a continuous scene of buildings in a mountainous landscape in underglaze blue, (glued breaks across cover and handle), *20.3cm high*. (4).

£250 - 350

165

A FAMILLE VERTE JAR AND COVER

Late 19th century

The domed cover enamelled with lotus issuing from a pond, the body with a pair of pheasants on flowering branches of magnolia and tree-peony issuing from rockwork. *34.5cm high*. (2).

£300 - 400

166

A FAMILLE ROSE BOTTLE VASE

Yongzheng four-character mark but 20th century

The slender neck with flaring and inverted rim above tapering body, all enamelled with a profusion of lotus flowers and leaves issuing from rippling water, (fine firing cracks to footrim). *13.5cm high, and with box*. (2).

£500 - 700

167

A 'CLOBBERED' IMARI CISTERN

Kangxi with later enamels

The fluted pear-shaped flat-backed cistern moulded with double-dolphin cresting and a monster mask spout, decorated with a village landscape below broad border, with later added birds and flowers in colourful enamels (old repaired break). *37cm high*.

£400 - 500

168

A PAIR OF ENAMELLED BALUSTER VASES

20th century

Each decorated with two birds perched in a willow tree, with blossoming peony branches and butterflies, (restored). *45.5cm high*. (2).

£300 - 500

169

A LARGE CANTON FAMILLE ROSE PUNCH BOWL

19th century

Enamelled to interior and exterior with alternating panels of courtly figures and birds and flowers, spaced by butterflies and floral borders. *34.2cm diameter*.

£200 - 300



166



167



168



170



171

170

A CANTON FAMILLE ROSE AFTERNOON TEA SET ON TRAY

19th century

Comprising a shaped-triangular tray set with a large and a small tea pot and cover, a cream jug and two cups with saucers.
tray 27cm wide. (10).

£300 - 500

171

A PAIR OF MIRRORED FAMILLE ROSE WALL VASES

Late Qing

Each of flat baluster form, the flaring neck with twin dragon handles and a small panel of lotus above a body with raised panel in relief depicting a lady and attendant in an interior setting, within a surround of scrolling lotus, and raised on integral 'faux-bois' stand, the reverse pierced for wall mounting and decorated simulating marble.
19cm high. (2).

£600 - 800

172

A FAMILLE ROSE SLEEVE VASE

Early 20th century

Enamelled all over with a variety of insects and scattered blooms of lotus, peony and prunus.

26.5cm high.

£200 - 300

173

A FAMILLE ROSE BALUSTER VASE

Qianlong mark but Republic period

Of oviform and decorated with a continuous mountainous river landscape, (body crack).

20cm high

£250 - 350

174

A PAIR OF POLYCHROME GLAZED GARDEN SEATS

Late 19th/20th century

Each of barrel form with pierced designs of butterflies below a band of prunts, all above pierced cash coins suspended from bats, in green, blue and yellow glaze.

48cm high. (2).

£300 - 500

175

THREE FAMILLE ROSE CANTON VASES

19th century

The tallest of cylindrical form and with flaring neck modelled with applied lion handles and further with chilong dragons to the shoulders, *34.5cm high*, together with two smaller examples, *25cm high*, (imperfections).

(3).

£300 - 500



179

176

QUANTITY OF CANTON FAMILLE ROSE PORCELAIN

Comprising, a jar with cover, *15.5cm high*; a brush pot with relief and pierced decoration, *10.8cm high*; two small vases; a bowl and seven various plates.
(15).

£300 - 500

177

A WUCAI SLEEVE VASE AND A FAMILLE ROSE BALUSTER VASE AND COVER

19th and 20th century

The 19th century wucaï vase of gu-form with raised central collar, the upper register enamelled with a scholar and attendants, above two further registers of flowering branches, *25.2cm high*; the baluster vase with continuous scene of lady and attendant in garden, (cover with restored chip).

31cm total height (3).

£300 - 500

178

A FAMILLE VERTE BASKET AND COVER

Kangxi style but later

The ovoid body decorated with moulded and enamelled honeycomb ground interrupted by peonies and diaper bands, with formal borders at foot and neck, the raised handle painted to simulate bamboo bands.

14.5cm high. (2).

£500 - 800



180

179

A FAUX-BOIS GROUND 'DEER' DISH

18th century

The deep dish enamelled with two deer beside rockwork issuing prunus, with cranes and pomegranates at rim, all on a faux-bois ground to front and back.

21.5cm diameter.

£500 - 700

Bearing dealer's label 'ARTALLARTS & ANTIQUES, LONDON KT1, 3960'.

180

A FAMILLE ROSE YELLOW-GROUND MEDALLION BOWL

Bearing a six-character Xianfeng mark

The exterior reserved with four roundels depicting animals with rocks and flowers, on yellow ground with an interlocking swastika pattern and diaper rim, interior red ground and painted floral pattern with gilt touches.

13cm diameter.

£1,500 - 2,000

181

A CYLINDRICAL BRUSH POT

18th/19th century

Decorated with chrysanthemums amid rocks in iron red and cobalt blue on a celadon ground.

16cm high.

£300 - 400



182

182
A FAMILLE VERTE ROULEAU VASE

19th century
 The cylindrical body and tall neck with panels enclosing dragons and mythical beasts amongst waves and birds and flowers, all reserved on a foliate meander on a black ground.
48cm high

£500 - 700



184

184
A FAMILLE VERTE VASE

Kangxi
 Of square-section with a flaring neck, the neck enamelled with a continuous landscape with single scholar by a willow tree, each of the four sides showing scholars at various pursuits in mountainous landscape settings.
47cm high and on a carved wood stand (2).

£800 - 1,200

185
A CANTON FAMILLE ROSE PUNCH BOWL ON WOOD STAND

19th century
 Enamelled to the interior with a central circular figural panel within four further figural panels spaced by panels of Buddhist emblems, within key-fret borders in gilt and below a band of flowers and foliage, the exterior showing a continuous scene of figures on terraces.
33cm diameter and displayed on an associated carved wood stand (2).

£500 - 700

186
A PAIR OF FAMILLE ROSE CHARGERS

Yongzheng period
 Each circular dish with four sprays of blooms and fruits to the wide rim, the cavetto with shaped foliate panels on a diaper ground, the wells in underglaze blue with flowering peony, (damages).
38cm diameter. (2).

£600 - 800

187
A FAMILLE ROSE BOWL

Bearing a Kangxi six-character mark but 19th century
 The interior well enamelled with a single peony blossom beneath a copper red border to the rim with panels of precious objects, the exterior with a pair of pheasants on rockwork issuing flowering branches, (old repaired crack from rim).
17.5cm diameter.

£500 - 600

183
A PAIR OF IRON-RED AND GILT 'TWO-DRAGON' DISHES AND ASSOCIATED BOWL

The dishes with underglaze blue Guangxu six-character mark
 Enamelled with two four-clawed dragons coiling around a gilt flaming pearl, their eyes picked out in white and black enamel, all on a ground of clouds, the underside of the rim with lotus scrolls, *14cm diameter*, (small imperfections at rim); together with a similarly decorated bowl bearing an iron-red six-character Guangxu mark but probably later.
11.4cm diameter

£500 - 700



183

188

A SMALL TEADUST-GLAZED FIVE-NECKED 'TULIP' VASE

Qing Dynasty

The vase with a compressed globular body, with a central tall neck of bamboo-form, flanked with adjacent smaller necks of similar design. *14cm high*

£500 - 600



188

189 *

A GARLIC-HEAD CELADON VASE

Yongzheng six-character mark but later

The pear-shaped body raised on a shallow foot with moulded twin mask and hoop handles, the long neck moulded with a single ring and extending to a garlic mouth enclosed in a ribbed flower petal collar, covered with a thin celadon glaze. *20.6cm high.*

£1,000 - 1,500

190

A CELADON AND FAUX-BRONZE VASE

19th century

Of baluster form with twin mask-and-tongue handles suspending hoops, in dark stained biscuit imitating bronze, with further bands of archaic motifs in low-relief biscuit, reserved on celadon and crackle glazes, Chenghua four-character mark to base, (one hoop lacking). *50.5cm high.*

£500 - 600



189

191

A PAIR OF CELADON VASES

19th century

Each pear-shaped, the slender neck with ribbed banding and flaring mouth, relief decorated with a single coiling dragon chasing the flaming pearl above crashing waves, (both with circumferential crack). *23cm high. (2).*

£300 - 400



191

192

A CRACKLE-GLAZED JARLET

Of globular form covered in pale green glaze with a large craquelure some lines of which stained dark and ochre.

7cm high.

£400 - 600

193

A TANG-STYLE TERRACOTTA LADY AND A SLIP DECORATED POTTERY EWER

The lady standing with hands clasped below flowing robe, her hair elaborately coiffured, (restored), *33.5cm high*; the wide-necked ewer with three loop handles at shoulder and single straight spout, the upper two thirds covered in matt black slip, *17cm high.*

(2).

£300 - 500

The lady bearing a circular paper label reading 'Sze Yuan Tang collection'.



194



195



196 (front)



196 (reverse)

194

A PAIR OF TURQUOISE-GLAZED FAUX-BAMBOO VASES

19th century

Each vase formed as a section of bamboo with further shoots moulded in low relief to the exterior, all covered in a deep turquoise glaze, mounted at the foot with gilt-metal brackets.

17cm high. (2).

£400 - 600

195

A FLAMBÉ BOTTLE VASE

Of pear-shape with flaring and inverted rim, the thick glaze with deep red, lavender and electric blue tones, thinning around the mouth and pooling at the foot, (trimmed at footrim).

21.3cm high.

£500 - 800

196

A SHIWAN-STYLE FIGURE, A JUNYAO SAUCER, TWO YIXING TEAPOTS AND OTHER MONOCHROMES

A luohan figure in dappled green-glazed robes, 22.5cm high; the circular saucer dish on a straight foot, in thick pale blue glaze, 11.5cm diameter; the teapots with rustic handles and spouts, both stamped, largest 10.5cm high; a crackle-ware vase, 14.5cm high; a dark green celadon bowl, 15cm diameter; a qingbai conical bowl with incised and combed decoration, 16.7cm diameter; a blanc-de-chine libation cup, 5.5cm high; a sancai glazed rectangular tea caddy, 13cm high (various damages). (qnty).

£500 - 700

197

A LONGQUAN CELADON VASE

Ming

Of heavily potted slender oviform with short straight neck, carved with scrolling lotus stems bearing flowers and foliage between bands of vertical ribbing, all under a glossy olive-green glaze.

27.2cm high.

£200 - 300



198



199

198
**A LARGE CRACKLE-GLAZED BOWL AND A SCROLL-FORM
 HARDWOOD STAND**

20th century
 The heavily-potted, deep bowl covered in a pale blue glaze with some lines of the crackle stained black and ochre, *41cm diameter*; together with a scroll-end stand raised on four bracket feet, *34.3cm x 23cm x 7cm*.
 (2).

£700 - 900

199
A PAIR OF YELLOW-GLAZED MODELS OF HORSES

19th century
 The two beasts modelled recumbent, with the legs folded underneath and the heads raised and turned backwards, all covered in a mustard-hued glaze, wood stands.
Each: 15.5cm wide (4).

£500 - 800



200

200
A PAIR OF BLACK-GLAZED VASES

Bearing Qianlong seal mark but later
 Each of flattened baluster form with dragon head handles, both sides moulded with pairs of dragons among clouds, within scrolling lotus border, key-fret band at rim, (restored).
33cm high. (2).

£500 - 800

201
A CRACKLE-GLAZED TRIPOD INCENSE BURNER

The wide, shallow vessel raised on three small feet, with prunts underneath a short everted mouth rim, the base dressed in brown slip, all covered in a green-grey glaze with a dark crackle.
32cm wide.

£300 - 400



202

202

A PAIR OF GLAZED POTTERY FIGURES OF STANDING WARRIORS

Sui/early Tang Dynasty

Each standing wearing elaborate armoured robes and helmets, the right hand held to the chest with an aperture for an implement, green, red and black pigments remaining with areas of iridescence.

41cm high. (2).

£600 - 800

Provenance:

Christie's London, 11 December 1989, lot 75

203

A PAINTED TERRACOTTA EFFIGY JAR

In the style of the Neolithic Majiayao culture, the cover modelled as a human head with pierced apertures for eyes and mouth, the rim meeting the cover in a jagged line, the jar of tapering form with twin lug handles, the shoulder painted with hatched panels spaced by geometric shapes.

27.5cm high. (2).

£300 - 500

Bearing circular paper label reading 'Sze Yuan Tang collection'.

204

A PAIR OF PAINTED POTTERY FIGURES OF TOMB GUARDIANS

Tang Dynasty

Each ferocious warrior modelled standing in full battle armour with a helmet, breastplate and shield, the right hand positioned to hold an implement, the faces with bristling beards, bulging eyes and stern lips, cold painted with red and white pigments.

Each 45cm high (2).

£500 - 700

Provenance:

a Swedish private collection, acquired in the early 20th century

The result of Oxford Authentication Ltd. thermoluminescence test no.C118e44 dated 29 May 2018, is consistent with the dating of this lot.



204

205

A POTTERY FIGURE OF A COURT LADY

Tang Dynasty

The figure modelled standing at ease wearing long, loose robes gathered about the concealed hands, the round face with small features and crowned with an elaborate hairstyle.

35cm high

£500 - 700

Provenance:

a Swedish private collection, acquired in the early 20th century

The result of Oxford Authentication Ltd. thermoluminescence test no.C116n76 dated 24 October 2016, is consistent with the dating of this lot.



208

206

A PAIR OF POTTERY FIGURES OF HORSES AND RIDERS

Northern Wei Dynasty

Each equine modelled standing four square and in battle accoutrements, the rider seated upright and wearing full armour and helmet, the hands positioned as if to hold a spear and reins, boxes. *Each: 36cm high (4).*

£500 - 700

Provenance:

a Swedish private collection, acquired in the early 20th century

The result of Oxford Authentication Ltd. thermoluminescence test no.C117g26 dated 10 August 2017, is consistent with the dating of this lot.



205

207

A WHITE-GLAZED CARVED LANTERN VASE AND ANOTHER VASE

18th century or later

The vase carved in low relief to the exterior with stylised *chilong* dragons amongst a scrolling leafy meander, the flaring neck with lappets and the tiered foot with further foliate motifs; together with an unfinished white-glazed baluster vase, *yenyen*, *Qing Dynasty*. *33.5cm high (2).*

£500 - 600

208

A LARGE TERRACOTTA CAMEL

Tang

The Bactrian camel modelled standing on a rectangular base, caparisoned with a large saddle suspending mask-decorated saddle bags, (restored). *51cm high*

£500 - 700



206

209

A LONGQUAN CELADON-GLAZED RELIQUARY AND ATTENDANT FIGURES

Probably Early Ming Dynasty

The reliquary modelled as a stylised house with a two-tiered roof flanked with decorative mouldings, a front door and a terrace fence, all covered in a thick green glaze, together with a set of four attendant figures similarly glazed. *The reliquary: 33cm high (5).*

£1,500 - 2,000

Provenance:

collected in the early 20th century in China, and thence by descent

Compare the present lot with a Longquan celadon-glazed reliquary, dated Southern Song Dynasty, but without any figures, sold as part of the Falk Collection at Christie's, 16 October 2001, lot 115. Also see another version, but without steps or balustrade, also dated to the 12th-13th century, in the Ashmolean Museum, Oxford, and illustrated in M. Traeger, *Song Ceramics*, London, 1982, p. 181, no. 252.

210

A SILVER-GLAZED BOTTLE VASE

19th century

The elegantly potted vessel with a compressed globular body rising to a gently flared mouth rim, all covered in an unusual gun-metal hued glaze. *16.5cm high.*

£500 - 700



209

For details of the charges payable in addition to the final Hammer Price of each please refer to paragraphs 7 & 8 of the Notice to Bidders at the back of the catalogue.

Paintings



215



212



213

211 *

TWO SMALL MARINE PAINTINGS

19th century

Both in gouache, and framed and glazed: the first of a junk under sail, *image 16cm x 10cm*; the second of a harbour with a river boat and seagulls, possibly Hong Kong, *16cm x 10.5cm*.

(2).

£500 - 700

212

AFTER QIU YING (1494–1552) (LATE QING DYNASTY)

Offerings

Ink and colour on silk, depicting two ladies and a gentleman carrying offering trays in a mountainous landscape, bearing signature Qiu Ying, mounted as hanging scroll.

Image 87.5cm x 39cm.

£500 - 800

213

ANONYMOUS (19TH CENTURY)

Ancestor painting

Ink and colour on paper, mounted as a hanging scroll.

Image 47cm x 87cm.

£500 - 800

214

A HAND SCROLL PAINTING

Signed Xu Wei, 20th century

Consisting of six separate horizontal sheets, four painted with figures in a garden preparing for a festival, with two panels of calligraphy, ink and colour on silk.

Each sheet 26cm x 81cm, and mounted as a hand scroll.

£500 - 700



218 (detail)



219

215

A HAND SCROLL PAINTING

Signed Xu Wei, 20th century

Depicting travellers in a rocky landscape with three pavilions surrounded by pine, willow and prunus trees, ink and colour on silk. *Image 230.8cm x 26.7cm, and mounted on silk and paper.*

£500 - 700

216

FLOWERING PRUNUS BRANCHES

Chinese School, dated within inscription 1973

Ink and colour on paper, inscribed 'Red Plum in early Spring on the bank of the River Li, Guilin', signed in two red seals, "Sun Yu". *67cm x 44cm*

£500 - 700

217

ANONYMOUS (18TH/19TH CENTURY)

Portrait of Yun Bing

Ink and pigment on silk, one red seal, framed and glazed. *32.5cm x 68.5cm*

£500 - 800

218

AFTER LU ZHI (1496-1576) (19TH OR 20TH CENTURY)

Four Figural Scenes

Ink and pigment on silk, comprising four separate scenes, with two colophons on paper bearing signatures of Xu Wei, inscriptions and red seals, all mounted as a hand scroll.

Each scene: 81.5cm x 26cm

£500 - 600

219

SHRIMPS AND FISH

Qi Liangmo (b.1938)

Black ink on paper. Titled and with two red seals reading 'Qi Liangmo' and 'Baishi's 7th son'.

69cm x 34cm

£500 - 700

7th son of Qi Baishi, Qi Liangmo began studying under his father from the age of 8 years. His paintings follow the style of his father.

220

A COLLECTION OF REFERENCE WORKS

Transactions of the Oriental Ceramic Society bound annual editions: Vols. 38-52, 1969-1971 to 1987-1988, (lacking vol. 42, 1977-1978) together with an additional bound volume of the Hills Gold Medal lecture by John Alexander Pope, the History of the History of Ming Porcelain, 1971

BUSHELL, STEPHEN, W., Chinese Art: Vol I-II, Victoria and Albert Museum Handbooks, 1924

KUNG-WANG, HUANG; CHEN, WU; TSAN, NI; MENG, WANG, The Four Great Masters of the Yuan, The National Palace Museum, 1975

HETHERINGTON, A. L., The Early Ceramic Wares of China, Benn Brothers, 1922

(18).

£300 - 500

221

A COLLECTION OF HARDBACK REFERENCE BOOKS

ADDIS, J. M., Chinese Ceramics from Datable Tombs, and some other dated material: a handbook, London: Sotheby Parke Bernet, 1978

BRANKSTON, A. D., Early Ming Wares of Chingtechen, Oxford University Press, Hong Kong, 1982

BROWN, ROXANNA, M., The Ceramics of South-East Asia. Their Dating and Identification, Kuala Lumpur Oxford University Press, 1977

DONNELLY, P. J., Blanc De Chine, The Porcelain Of Tehua In Fukien, Faber And Faber, 1969

GARNER, SIR HARRY, Oriental blue and white, Faber, 1964

GOMPERTZ, G. St. G. M., Korean Pottery and Porcelain of the Yi Period, Faber and Faber, 1968

HOBSON, R. L., The wares of the Ming dynasty, Dover Publications, 1978

I-HUA, T'UNG (ed.), Masterworks of Chinese Porcelain in the National Palace Museum: Supplement, The National Palace Museum, Taipei, Taiwan, Republic of China, 1973

JOSEPH, ADRIAN M., Chinese and Anamese Ceramics found in the Philippines and Indonesia, Hugh Moss (Publishing) Ltd., London, 1973

LEGEZA, IRENEUS LASZLO, A Descriptive and Illustrated Catalogue of the Malcolm Macdonald Collection of Chinese Ceramics in the Gulbenkian Museum of Oriental Art and Archaeology, School of Oriental Studies, University of Durham, Oxford University Press, London, 1972

LI, LIN-T'SAN; SHIH, LING-YUN, Masterpieces of Chinese Portrait Painting in the National Palace Museum, National Palace Museum, Taipei, 1971

MACINTOSH, DUNCAN, Chinese Blue and White Porcelain, C. E. Tuttle Co, 1977

MEDLEY, MARGARET, The Chinese potter: A practical history of Chinese ceramics, Phaidon, 1976

POPE, JOHN ALEXANDER, Chinese Porcelains from the Ardebil Shrine, Washington, Smithsonian Institution/Freer Gallery of Art, 1956

SCOTT, ROSEMARY, Elegant Form & Harmonious Decoration: Four Dynasties of Jingdezhen Porcelain (Percival David Foundation of Chinese Art: Colloquies on Art and Archaeology in Asia), Art Media Resources Ltd, 1992

STOCK, DIANA (ed.), Khmer ceramics, 9th-14th century, Southeast Asian Ceramic Society, Singapore, 1981 (signed by editor)

TREGEAR, MARY, Song Ceramics, Rizzoli, 1982

WILLETTS, WILLIAM; LIM, SUAN POH, Nonya ware and Kitchen Ch'ing: Ceremonial and Domestic Pottery of the 19th and 20th Centuries Commonly Found in Malaysia, Oxford University Press, 1982

YEO, S. T.; MARTIN, JEAN, Chinese Blue and White Ceramics, Charles E Tuttle Co, 1978

YATIM, OTHMAN BIN MOHD, Chinese Islamic Wares in the Collection of Muzium Negara/Tembikar China Berunsur Islam Dalam Koleksi Muzium Negara, Kuala Lumpur, 1981

YOUNG, CAROL M. (ed.), Vietnamese Ceramics : With an Illustrated Catalogue of the Exhibition Organized By the Southeast Asian Ceramic Society and Held at the National Museum, Singapore in June 1982, Southeast Asian Ceramic Society and Oxford University Press, Singapore, 1982

(21).

£300 - 500

END OF SALE

Bonhams

International Auction Calendar 2019

FINE AND RARE WINES

Thursday 4 July	London
Friday 13 September	San Francisco
Thursday 26 September	London
Friday 22 November	Hong Kong
Thursday 28 November	London
Friday 6 December	San Francisco

WHISKY

Friday 23 August	Hong Kong
Wednesday 9 October	Edinburgh
Friday 22 November	Hong Kong
Tuesday 10 December	Edinburgh

ENQUIRIES

UK
+44 (0) 20 7468 5811
wine@bonhams.com
whisky@bonhams.com

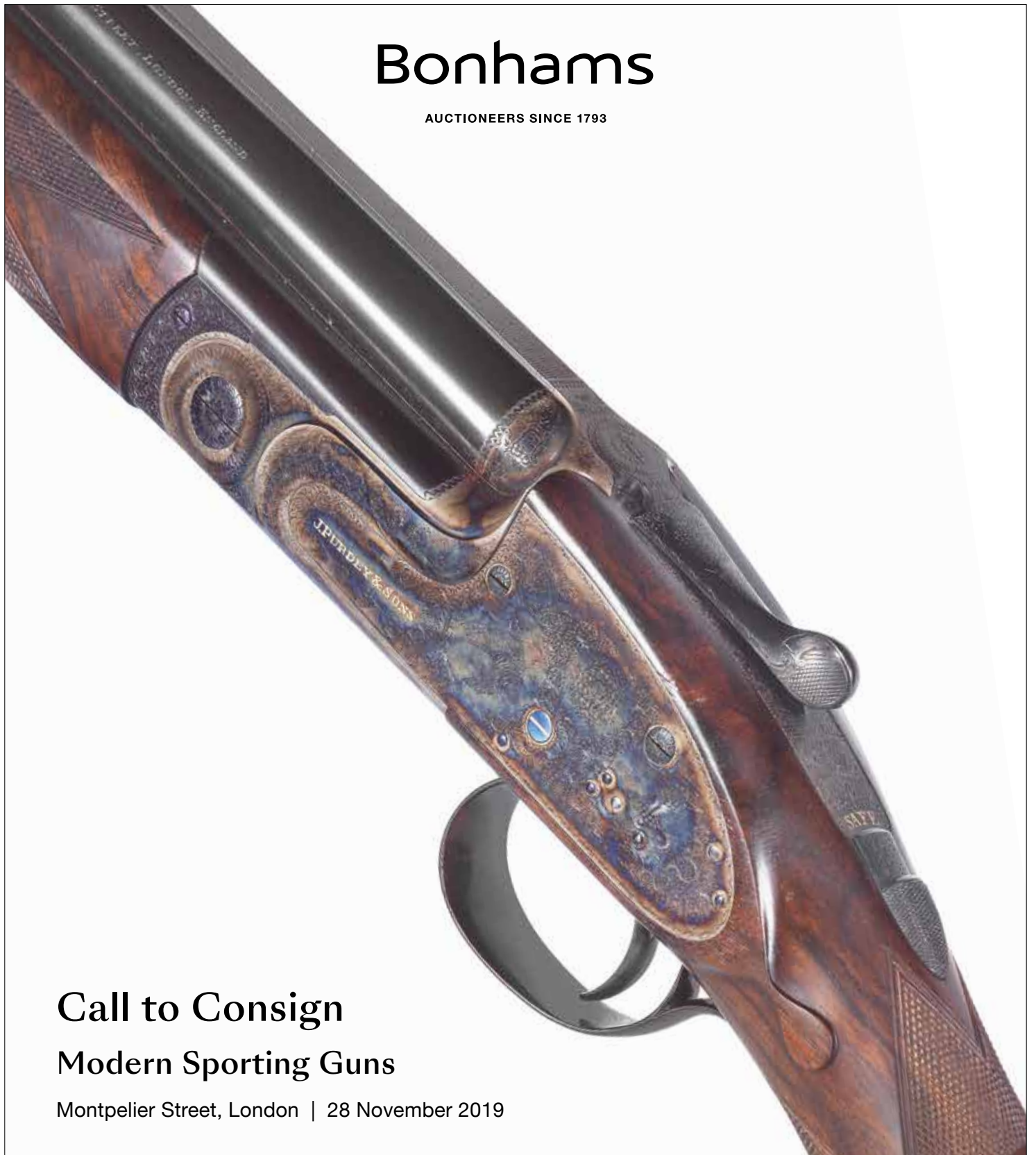
USA
+1 (415) 503 3221
wine.us@bonhams.com

HONG KONG
+852 2918 4321
winehk@bonhams.com
bonhams.com/wine



Bonhams

AUCTIONEERS SINCE 1793



Call to Consign Modern Sporting Guns

Montpelier Street, London | 28 November 2019

CLOSING DATE
10 October 2019

ENQUIRIES
Patrick Hawes
+44 (0) 20 7393 3815
patrick.hawes@bonhams.com
bonhams.com/guns

**A FINE SMITH-ENGRAVED 20-BORE
SINGLE-TRIGGER OVER-AND-UNDER
SIDELOCK EJECTOR GUN BY J. PURDEY
& SONS, NO. 29705**
Sold for £51,312

Bonhams

AUCTIONEERS SINCE 1793



Call to Consign

British & European Art

Montpelier Street, London | 12 November 2019 at 1pm

CLOSING DATE

24 September 2019

ENQUIRIES

0207 393 3988

anna.lloyd@bonhams.com

bonhams.com/19thcentury

SIR JOHN ALFRED ARNESBY BROWN, RA (BRITISH, 1866-1955)

Midsummer

oil on canvas

100 x 138.5cm (39 3/8 x 54 1/2in)

£12,000 - 18,000 *

NOTICE TO BIDDERS

This notice is addressed by *Bonhams* to any person who may be interested in a *Lot*, and to all persons participating in the auction process including auction attendees, *Bidders* and potential *Bidders* (including any eventual *Buyer* of the *Lot*). For ease of reference we refer to such persons as "*Bidders*" or "you". Our List of Definitions and Glossary is incorporated into this *Notice to Bidders*. It is at Appendix 3 at the back of the *Catalogue*. Where words and phrases are used in this notice which are in the List of Definitions, they are printed in italics.

IMPORTANT: Additional information applicable to the *Sale* may be set out in the *Catalogue* for the *Sale*, in an insert in the *Catalogue* and/or in a notice displayed at the *Sale* venue and you should read them as well. Announcements affecting the *Sale* may also be given out orally before and during the *Sale* without prior written notice. You should be alert to the possibility of changes and ask in advance of bidding if there have been any.

1. OUR ROLE

In its role as *Auctioneer of Lots*, *Bonhams* acts solely for and in the interests of the *Seller*. *Bonhams'* job is to sell the *Lot* at the highest price obtainable at the *Sale* to a *Bidder*. *Bonhams* does not act for *Buyers* or *Bidders* in this role and does not give advice to *Buyers* or *Bidders*. When it or its staff make statements about a *Lot* or, if *Bonhams* provides a *Condition Report* on a *Lot* it is doing that on behalf of the *Seller* of the *Lot*. *Bidders* and *Buyers* who are themselves not expert in the *Lots* are strongly advised to seek and obtain independent advice on the *Lots* and their value before bidding for them. The *Seller* has authorised *Bonhams* to sell the *Lot* as its agent on its behalf and, save where we expressly make it clear to the contrary, *Bonhams* acts only as agent for the *Seller*. Any statement or representation we make in respect of a *Lot* is made on the *Seller's* behalf and, unless *Bonhams* sells a *Lot* as principal, not on our behalf and any *Contract for Sale* is between the *Buyer* and the *Seller* and not with us. If *Bonhams* sells a *Lot* as principal this will either be stated in the *Catalogue* or an announcement to that effect will be made by the *Auctioneer*, or it will be stated in a notice at the *Sale* or an insert in the *Catalogue*.

Bonhams does not owe or undertake or agree to any duty or responsibility to you in contract or tort (whether direct, collateral, express, implied or otherwise). If you successfully bid for a *Lot* and buy it, at that stage *Bonhams* does enter into an agreement with you as the *Buyer*. The terms of that contract are set out in our *Buyer's Agreement*, which you will find at Appendix 2 at the back of the *Catalogue*, and this will govern *Bonhams'* relationship with the *Buyer*.

2. LOTS

Subject to the *Contractual Description* printed in bold letters in the *Entry* about the *Lot* in the *Catalogue* (see paragraph 3 below), *Lots* are sold to the *Buyer* on an "as is" basis, with all faults and imperfections. Illustrations and photographs contained in the *Catalogue* (other than photographs forming part of the *Contractual Description*) or elsewhere of any *Lots* are for identification purposes only. A photograph or illustration may not reflect an accurate reproduction of the colour(s) or true condition of the *Lot*. *Lots* are available for inspection prior to the *Sale* and it is for you to satisfy yourself as to each and every aspect of a *Lot*, including its authorship, attribution, condition, provenance, history, background, authenticity, style, period, age, suitability, quality, roadworthiness (if relevant), origin, value and estimated selling price (including the *Hammer Price*). It is your responsibility to examine any *Lot* in which you are interested. It should be remembered that the actual condition of a *Lot* may not be as good as that indicated by its outward appearance. In particular, parts may have been replaced or renewed and *Lots* may not be authentic or of satisfactory quality; the inside of a *Lot* may not be visible and may not be original or may be damaged, as for example where it is covered by upholstery or material. Given the age of many *Lots* they may have been damaged and/or repaired and you should not assume that a *Lot* is in good condition. Electronic or mechanical items or parts are sold for their artistic, historic or cultural interest and may not operate or may not comply with current statutory requirements. You should not assume that electrical items designed to operate on mains electricity

will be suitable for connection to the mains electricity supply and you should obtain a report from a qualified electrician on their status before doing so. Such items which are unsuitable for connection are sold as items of interest for display purposes only. If you yourself do not have expertise regarding a *Lot*, you should consult someone who does to advise you. We can assist in arranging facilities for you to carry out or have carried out more detailed inspections and tests. Please ask our staff for details.

Any person who damages a *Lot* will be held liable for the loss caused.

3. DESCRIPTIONS OF LOTS AND ESTIMATES

Contractual Description of a Lot

The *Catalogue* contains an *Entry* about each *Lot*. Each *Lot* is sold by its respective *Seller* to the *Buyer* of the *Lot* as corresponding only with that part of the *Entry* which is printed in bold letters and (except for the colour, which may be inaccurately reproduced) with any photograph of the *Lot* in the *Catalogue*. The remainder of the *Entry*, which is not printed in bold letters, represents *Bonhams'* opinion (given on behalf of the *Seller*) about the *Lot* only and is not part of the *Contractual Description* in accordance with which the *Lot* is sold by the *Seller*.

Estimates

In most cases, an *Estimate* is printed beside the *Entry*. *Estimates* are only an expression of *Bonhams'* opinion made on behalf of the *Seller* of the range where *Bonhams* thinks the *Hammer Price* for the *Lot* is likely to fall; it is not an *Estimate* of value. It does not take into account any VAT or *Buyer's Premium* payable or any other fees payable by the *Buyer*, which are detailed in paragraph 7 of the *Notice to Bidders*, below. Prices depend upon bidding and lots can sell for *Hammer Prices* below and above the *Estimates*, so *Estimates* should not be relied on as an indication of the actual selling price or value of a *Lot*. *Estimates* are in the currency of the *Sale*.

Condition Reports

In respect of most *Lots*, you may ask *Bonhams* for a *Condition Report* on the *Lot's* general physical condition. If you do so, this will be provided by *Bonhams* on behalf of the *Seller* free of charge. As this is offered additionally and without charge, *Bonhams* is not entering into a contract with you in respect of the *Condition Report* and accordingly does not assume responsibility to you in respect of it. The *Condition Report* represents *Bonhams'* reasonable opinion as to the *Lot's* general condition in the terms stated in the particular report, and *Bonhams* does not represent or guarantee that a *Condition Report* includes all aspects of the internal or external condition of the *Lot*. Neither does the *Seller* owe or agree to owe you as a *Bidder* or *Buyer* any obligation or duty in respect of this free report about a *Lot*, which is available for your own inspection or for inspection by an expert instructed by you.

The Seller's responsibility to you

The *Seller* does not make or agree to make any representation of fact or contractual promise, *Guarantee* or warranty and undertakes no obligation or duty, whether in contract or in tort (other than to the eventual *Buyer* as set out above), in respect of the accuracy or completeness of any statement or representation made by him or on his behalf, which is in any way descriptive of any *Lot* or as to the anticipated or likely selling price of any *Lot*. Other than as set out above, no statement or representation in any way descriptive of a *Lot* or any *Estimate* is incorporated into any *Contract for Sale* between a *Seller* and a *Buyer*.

Bonhams' responsibility to you

You have the opportunity of examining the *Lot* if you want to and the *Contract for Sale* for a *Lot* is with the *Seller* and not with *Bonhams*; *Bonhams* acts as the *Seller's* agent only (unless *Bonhams* sells the *Lot* as principal).

Bonhams undertakes no obligation to you to examine, investigate or carry out any tests, either in sufficient depth or at all, on each *Lot* to establish the accuracy or otherwise of any *Descriptions* or opinions given by *Bonhams*, or by any person on *Bonhams'* behalf, whether in the *Catalogue* or elsewhere.

You should not suppose that such examinations, investigations or tests have occurred.

Bonhams does not make or agree to make any representation of fact, and undertakes no obligation or duty (whether in contract or tort) in respect of the accuracy or completeness of any statement or representation made by *Bonhams* or on *Bonhams'* behalf which is in any way descriptive of any *Lot* or as to the anticipated or likely selling price of any *Lot*. No statement or representation by *Bonhams* or on its behalf in any way descriptive of any *Lot* or any *Estimate* is incorporated into our *Buyer's Agreement*.

Alterations

Descriptions and *Estimates* may be amended at *Bonhams'* discretion from time to time by notice given orally or in writing before or during a *Sale*.

THE *LOT* IS AVAILABLE FOR INSPECTION AND YOU MUST FORM YOUR OWN OPINION IN RELATION TO IT. YOU ARE STRONGLY ADVISED TO EXAMINE ANY *LOT* OR HAVE IT EXAMINED ON YOUR BEHALF BEFORE THE *SALE*.

4. CONDUCT OF THE SALE

Our *Sales* are public auctions which persons may attend and you should take the opportunity to do so. We reserve the right at our sole discretion to refuse admission to our premises or to any *Sale* and to remove any person from our premises and *Sales*, without stating a reason. We have complete discretion as to whether the *Sale* proceeds, whether any *Lot* is included in the *Sale*, the manner in which the *Sale* is conducted and we may offer *Lots* for *Sale* in any order we choose notwithstanding the numbers given to *Lots* in the *Catalogue*. You should therefore check the date and starting time of the *Sale*, whether there have been any withdrawals or late entries. Remember that withdrawals and late entries may affect the time at which a *Lot* you are interested is put up for *Sale*. We have complete discretion in which to refuse any bid, to nominate any bidding increment we consider appropriate, to divide any *Lot*, to combine two or more *Lots*, to withdraw any *Lot* from a *Sale* and, before the *Sale* has been closed, to put up any *Lot* for auction again. Auction speeds can exceed 100 *Lots* to the hour and bidding increments are generally about 10%; however, these do vary from *Sale* to *Sale* and from *Auctioneer* to *Auctioneer*. Please check with the department organising the *Sale* for advice on this. Where a *Reserve* has been applied to a *Lot*, the *Auctioneer* may, in his absolute discretion, place bids (up to an amount not equalling or exceeding such *Reserve*) on behalf of the *Seller*. We are not responsible to you in respect of the presence or absence of any *Reserve* in respect of any *Lot*. If there is a *Reserve* it will be no higher than the lower figure for any *Estimate* in the *Catalogue*, assuming that the currency of the *Reserve* has not fluctuated adversely against the currency of the *Estimate*. The *Buyer* will be the *Bidder* who makes the highest bid acceptable to the *Auctioneer* for any *Lot* (subject to any applicable *Reserve*) to whom the *Lot* is knocked down by the *Auctioneer* at the fall of the *Auctioneer's* hammer. Any dispute as to the highest acceptable bid will be settled by the *Auctioneer* in his absolute discretion. All bids tendered will relate to the actual *Lot* number announced by the *Auctioneer*. An electronic currency converter may be used at the *Sale*. This equipment is provided as a general guide as to the equivalent amount in certain currencies of a given bid. We do not accept any responsibility for any errors which may occur in the use of the currency converter. We may use video cameras to record the *Sale* and may record telephone calls for reasons of security and to assist in solving any disputes which may arise in relation to bids made at the *Sale*. At some *Sales*, for example, jewellery *Sales*, we may use screens on which images of the *Lots* will be projected. This service is provided to assist viewing at the *Sale*. The image on the screen should be treated as an indication only of the current *Lot*. It should be noted that all bids tendered will relate to the actual *Lot* number announced by the *Auctioneer*. We do not accept any responsibility for any errors which may occur in the use of the screen.

5. BIDDING

You must complete and deliver to us one of our *Bidding Forms*, either our *Bidder Registration Form*, *Absentee Bidding Form* or *Telephone Bidding Form* in order to bid at our *Sales*.

If you are a new client at *Bonhams* or have not recently updated your registration details with us, you must pre-register to bid at least two working days before the *Sale* at which you wish to bid. You will be required to provide government-issued proof of identity and residence, and if you are a company, your certificate of incorporation or equivalent documentation with your name and registered address, government issued proof of your current address, documentary proof of your beneficial owners and directors, and proof of authority to transact.

We may also request a financial reference and /or deposit from you before allowing you to bid.

We reserve the rights at our discretion to request further information in order to complete our client identification and to decline to register any person as a *Bidder*, and to decline to accept their bids if they have been so registered. We also reserve the rights to postpone completion of the *Sale* of any *Lot* at our discretion while we complete our registration and identification enquiries, and to cancel the *Sale* of any *Lot* if you are in breach of your warranties as *Buyer*, or if we consider that such *Sale* would be unlawful or otherwise cause liabilities for the *Seller* or *Bonhams* or be detrimental to *Bonhams'* reputation.

Bidding in person

So long as you have pre-registered to bid or have updated your existing registration recently, you should come to our *Bidder* registration desk at the *Sale* venue and fill out a Registration and Bidding Form on (or, if possible, before) the day of the *Sale*. The bidding number system is sometimes referred to as "paddle bidding". You will be issued with a large card (a "paddle") with a printed number on it. This will be attributed to you for the purposes of the *Sale*. Should you be a successful *Bidder* you will need to ensure that your number can be clearly seen by the *Auctioneer* and that it is your number which is identified as the *Buyer's*. You should not let anyone else use your paddle as all *Lots* will be invoiced to the name and address given on your *Bidder* Registration Form. Once an invoice is issued it will not be changed. If there is any doubt as to the *Hammer Price* of, or whether you are the successful *Bidder* of, a particular *Lot*, you must draw this to the attention of the *Auctioneer* before the next *Lot* is offered for *Sale*. At the end of the *Sale*, or when you have finished bidding please return your paddle to the *Bidder* registration desk.

Bidding by telephone

If you wish to bid at the *Sale* by telephone, and have pre-registered to bid or have updated your existing registration details recently, please complete a Registration and Bidding Form, which is available from our offices or in the *Catalogue*. Please then return it to the office responsible for the *Sale* at least 24 hours in advance of the *Sale*. It is your responsibility to check with our Bids Office that your bid has been received. Telephone calls will be recorded. The telephone bidding facility is a discretionary service offered at no additional charge and may not be available in relation to all *Lots*. We will not be responsible for bidding on your behalf if you are unavailable at the time of the *Sale* or if the telephone connection is interrupted during bidding. Please contact us for further details.

Bidding by post or fax

Absentee Bidding Forms can be found in the back of this *Catalogue* and should be completed and sent to the office responsible for the *Sale*, once you have pre-registered to bid or have updated your existing registration details recently. It is in your interests to return your form as soon as possible, as if two or more *Bidders* submit identical bids for a *Lot*, the first bid received takes preference. In any event, all bids should be received at least 24 hours before the start of the *Sale*. Please check your *Absentee Bidding Form* carefully before returning it to us, fully completed and signed by you. It is your responsibility to check with our Bids Office that your bid has been received. This additional service is complimentary and is confidential. Such bids are made at your own risk and we cannot accept liability for our failure to receive and/or place any such bids. All bids made on your behalf will be made at the lowest level possible subject to *Reserves* and other bids made for the *Lot*. Where appropriate your bids will be rounded down to the nearest amount consistent with the *Auctioneer's* bidding increments. New *Bidders* must also provide proof of identity and address when submitting bids. Failure to do this will result in your bid not being placed.

Bidding via the internet

Please visit our *Website* at <http://www.bonhams.com> for details of how to bid via the internet.

Bonhams will not be liable for service delays, interruptions or other failures to make a bid caused by losses of internet connection, fault or failure with the website or bidding process, or malfunction of any software or system, computer or mobile device.

Bidding through an agent

Bids will be treated as placed exclusively by and on behalf of the person named on the *Bidding Form* unless otherwise agreed by us in writing in advance of the *Sale*. If you wish to bid on behalf of another person (your principal) you must complete the pre-registration requirements set out above both on your own behalf and with full details of your principal, and we will require written confirmation from the principal confirming your authority to bid.

You are specifically referred to your due diligence requirements concerning your principal and their source of funds, and the warranties you give in the event you are the Buyer, which are contained in paragraph 3 of the Buyer's Agreement, set out at Appendix 2 at the back of the Catalogue.

Nevertheless, as the *Bidding Form* explains, any person placing a bid as agent on behalf of another (whether or not he has disclosed that fact) will be jointly and severally liable with the principal to the *Seller* and to *Bonhams* under any contract resulting from the acceptance of a bid.

Equally, please let us know if you intend to nominate another person to bid on your behalf at the *Sale* unless this is to be carried out by us pursuant to a Telephone or *Absentee Bidding Form* that you have completed. If we do not approve the agency arrangements in writing before the *Sale*, we are entitled to assume that the person bidding at the *Sale* is bidding on his own behalf. Accordingly, the person bidding at the *Sale* will be the *Buyer* and will be liable to pay the *Hammer Price* and *Buyer's Premium* and associated charges. If we approve the identity of your client in advance, we will be in a position to address the invoice to your principal rather than you. We will require proof of the agent's client's identity and residence in advance of any bids made by the agent on his behalf. Please refer to our *Conditions of Business* and contact our Customer Services Department for further details.

6. CONTRACTS BETWEEN THE BUYER AND SELLER AND THE BUYER AND BONHAMS

On the *Lot* being knocked down to the *Buyer*, a *Contract for Sale* of the *Lot* will be entered into between the *Seller* and the *Buyer* on the terms of the *Contract for Sale* set out in Appendix 1 at the back of the *Catalogue*. You will be liable to pay the *Purchase Price*, which is the *Hammer Price* plus any applicable VAT. At the same time, a separate contract is also entered into between us as *Auctioneers* and the *Buyer*. This is our *Buyer's Agreement*, the terms of which are set out in Appendix 2 at the back of the *Catalogue*. Please read the terms of the *Contract for Sale* and our *Buyer's Agreement* contained in the *Catalogue* in case you are the successful *Bidder* including the warranties as to your status and source of funds. We may change the terms of either or both of these agreements in advance of their being entered into, by setting out different terms in the *Catalogue* and/or by placing an insert in the *Catalogue* and/or by notices at the *Sale* venue and/or by oral announcements before and during the *Sale*. It is your responsibility to ensure you are aware of the up to date terms of the *Buyer's Agreement* for this *Sale*.

7. BUYER'S PREMIUM AND OTHER CHARGES PAYABLE BY THE BUYER

Under the *Buyer's Agreement*, a premium (the *Buyer's Premium*) is payable to us by the *Buyer* in accordance with the terms of the *Buyer's Agreement* and at rates set out below, calculated by reference to the *Hammer Price* and payable in addition to it.

For this *Sale* the following rates of *Buyer's Premium* will be payable by *Buyers* on each *Lot* purchased:

27.5% up to £2,500 of the *Hammer Price*
25% of the *Hammer Price* above £2,500 and up to £300,000
20% of the *Hammer Price* above £300,000 and up to £3,000,000
13.9% of the *Hammer Price* above £3,000,000

Storage and handling charges may also be payable by the *Buyer* as detailed on the specific *Sale* Information page at the front of the catalogue.

The *Buyer's Premium* and all other charges payable to us by the *Buyer* are subject to VAT at the prevailing rate, currently 20%.

VAT may also be payable on the *Hammer Price* of the *Lot*, where indicated by a symbol beside the *Lot* number. See paragraph 8 below for details.

On certain *Lots*, which will be marked "AR" in the *Catalogue* and which are sold for a *Hammer Price* of €1,000 or greater (converted into the currency of the *Sale* using the European Central Bank Reference rate prevailing on the date of the *Sale*), the *Additional Premium* will be payable to us by the *Buyer* to cover our *Expenses* relating to the payment of royalties under the Artists Resale Right Regulations 2006. The *Additional Premium* will be a percentage of the amount of the *Hammer Price* calculated in accordance with the table below, and shall not exceed €12,500 (converted into the currency of the *Sale* using the European Central Bank Reference rate prevailing on the date of the *Sale*).

<i>Hammer Price</i>	Percentage amount
From €0 to €50,000	4%
From €50,000.01 to €200,000	3%
From €200,000.01 to €350,000	1%
From €350,000.01 to €500,000	0.5%
Exceeding €500,000	0.25%

8. VAT

The prevailing rate of VAT at the time of going to press is 20%, but this is subject to government change and the rate payable will be the rate in force on the date of the Sale.

The following symbols, shown beside the Lot number, are used to denote that VAT is due on the *Hammer Price* and *Buyer's Premium*:

- † VAT at the prevailing rate on *Hammer Price* and *Buyer's Premium*
- Ω VAT on imported items at the prevailing rate on *Hammer Price* and *Buyer's Premium*
- VAT on imported items at a preferential rate of 5% on *Hammer Price* and the prevailing rate on *Buyer's Premium*
- G Gold bullion exempt from VAT on the *Hammer Price* and subject to VAT at the prevailing rate on the *Buyer's Premium*
- Zero rated for VAT, no VAT will be added to the *Hammer Price* or the *Buyer's Premium*
- α *Buyers* from within the EU: VAT is payable at the prevailing rate on just the *Buyer's Premium* (NOT the *Hammer Price*). *Buyers* from outside the EU: VAT is payable at the prevailing rate on both *Hammer Price* and *Buyer's Premium*. If a *Buyer*, having registered under a non-EU address, decides that the item is not to be exported from the EU, then he should advise *Bonhams* immediately.

In all other instances no VAT will be charged on the *Hammer Price*, but VAT at the prevailing rate will be added to *Buyer's Premium* which will be invoiced on a VAT inclusive basis.

9. PAYMENT

It is of critical importance that you ensure that you have readily available funds to pay the *Purchase Price* and the *Buyer's Premium* (plus VAT and any other charges and *Expenses* to us) in full before making a bid for the *Lot*. If you are a successful *Bidder*, payment will be due to us by 4.30 pm on the second working day after the Sale so that all sums are cleared by the eighth working day after the Sale. Payments made by anyone other than the registered *Buyer* will not be accepted. *Bonhams* reserves the right to vary the terms of payment at any time.

Bonhams' preferred payment method is by bank transfer.

You may electronically transfer funds to our *Trust Account*. If you do so, please quote your paddle number and invoice number as the reference. Our *Trust Account* details are as follows:

Bank: National Westminster Bank Plc
Address: PO Box 4RY
250 Regent Street
London W1A 4RY
Account Name: Bonhams 1793 Limited Trust Account
Account Number: 25563009
Sort Code: 56-00-27
IBAN Number: GB 33 NWBK 560027 25563009

If paying by bank transfer, the amount received after the deduction of any bank fees and/or conversion of the currency of payment to pounds sterling must not be less than the sterling amount payable, as set out on the invoice.

Payment may also be made by one of the following methods:

Sterling personal cheque drawn on a UK branch of a bank or building society: all cheques must be cleared before you can collect your purchases and should be made payable to Bonhams 1793 Limited.

Cash: you may pay for *Lots* purchased by you at this Sale with notes or coins in the currency in which the Sale is conducted (but not any other currency) provided that the total amount payable by you in respect of all *Lots* purchased by you at the Sale does not exceed £3,000, or the equivalent in the currency in which the Sale is conducted, at the time when payment is made. If the amount payable by you for *Lots* exceeds that sum, the balance must be paid otherwise than in coins or notes; this limit applies to both payment at our premises and direct deposit into our bank account.

Debit cards issued in the name of the *Buyer* (including China Union Pay (CUP) cards and debit cards issued by Visa and MasterCard only). There is no limit on payment value if payment is made in person using Chip & Pin verification.

Payment by telephone may also be accepted up to £5,000, subject to appropriate verification procedures, although this facility is not available for first time buyers. If the amount payable by you for *Lots* exceeds that sum, the balance must be paid by other means.

Credit cards issued in the name of the *Buyer* (including China Union Pay (CUP) cards and credit cards issued by Visa and MasterCard only). There is a £5,000 limit on payment value if payment is made in person using Chip & Pin verification.

It may be advisable to notify your debit or credit card provider of your intended purchase in advance to reduce delays caused by us having to seek authority when you come to pay.

Note: only one debit or credit card may be used for payment of an account balance. If you have any questions with regards to card payments, please contact our Customer Services Department.

We reserve the rights to investigate and identify the source of any funds received by us, to postpone completion of the sale of any *Lot* at our discretion while we complete our investigations, and to cancel the Sale of any *Lot* if you are in breach of your warranties as *Buyer*, if we consider that such Sale would be unlawful or otherwise cause liabilities for the *Seller* or *Bonhams*, or be detrimental to *Bonhams'* reputation.

10. COLLECTION AND STORAGE

The *Buyer* of a *Lot* will not be allowed to collect it until payment in full and in cleared funds has been made (unless we have made a special arrangement with the *Buyer*). For collection and removal of purchased *Lots*, please refer to Sale Information at the front of the *Catalogue*. Our offices are open 9.00am – 5pm Monday to Friday. Details relating to the collection of a *Lot*, the storage of a *Lot* and our *Storage Contractor* after the Sale are set out in the *Catalogue*.

11. SHIPPING

For information and estimates on domestic and international shipping as well as export licenses please contact Alban Shipping on +44 (0) 1582 493 099 enquiries@albanshipping.co.uk

12. EXPORT/TRADE RESTRICTIONS

It is your sole responsibility to comply with all export and import regulations relating to your purchases and also to obtain any relevant export and/or import licence(s). Export licences are issued by Arts Council England and application forms can be obtained from its Export Licensing Unit. The detailed provisions of the export licensing arrangements can be found on the ACE website <http://www.artscouncil.org.uk/what-we-do/supporting-museums/cultural-property/export-controls/export-licensing/> or by phoning ACE on +44 (0)20 7973 5188. The need for import licences varies from country to country and you should acquaint yourself with all relevant local requirements and provisions. The refusal of any import or export licence(s) or any delay in obtaining such licence(s) shall not permit the rescission of any Sale nor allow any delay in making full payment for the *Lot*. Generally, please contact our shipping department before the Sale if you require assistance in relation to export regulations.

13. CITES REGULATIONS

Please be aware that all *Lots* marked with the symbol Y are subject to CITES regulations when exporting these items outside the EU. These regulations may be found at <http://www.defra.gov.uk/ahvla-en/imports-exports/cites/> or may be requested from:

Animal Health and Veterinary Laboratories Agency (AHVLA)
Wildlife Licensing
Floor 1, Zone 17, Temple Quay House
2 The Square, Temple Quay
BRISTOL BS1 6EB
Tel: +44 (0) 117 372 8774
The refusal of any CITES licence or permit and any delay in obtaining such licences or permits shall not give rise to the rescission or cancellation of any Sale, nor allow any delay in making full payment for the *Lot*.

14. THE SELLERS AND/OR BONHAMS' LIABILITY

Other than any liability of the *Seller* to the *Buyer* of a *Lot* under the *Contract for Sale*, neither we nor the *Seller* are liable (whether in negligence or otherwise) for any error or misdescription or omission in any *Description* of a *Lot* or any *Estimate* in respect of it, whether contained in the *Catalogue* or otherwise, whether given orally or in writing and whether given before or during the Sale. Neither we nor the *Seller* will be liable for any loss of *Business*, profits, revenue or income, or for loss of reputation, or for disruption to *Business* or wasted time on the part of management or staff, or for indirect losses or consequential damages of any kind, irrespective in any case of the nature, volume or source of the loss or damage alleged to be suffered, and irrespective of whether the said loss or damage is caused by or claimed in respect of any negligence, other tort, breach of contract (if any) or statutory duty, restitutionary claim or otherwise. In any circumstances where we and/or the *Seller* are liable in relation to any *Lot* or any *Description* or *Estimate* made of any *Lot*, or the conduct of any Sale in relation to any *Lot*, whether in damages, for an indemnity or contribution, or for a restitutionary remedy or otherwise, our and/or the *Seller's* liability (combined, if both we and the *Seller* are liable) will be limited to payment of a sum which will not exceed by way of maximum the amount of the *Purchase Price* of the *Lot* irrespective in any case of the nature, volume or source of any loss or damage alleged to be suffered or sum claimed as due, and irrespective of whether the liability arises from any negligence, other tort, breach of contract (if any) or statutory duty or otherwise. Nothing set out above will be construed as excluding or restricting (whether directly or indirectly) our liability or excluding or restricting any person's rights or remedies in respect of (i) fraud, or (ii) death or personal injury caused by our negligence (or by the negligence of any person under our control or for whom we are legally responsible), or (iii) acts or omissions for which we are liable under the Occupiers Liability Act 1957, or (iv) any other liability to the extent the same may not be excluded or restricted as a matter of law or (v) our undertakings under paragraphs 9 (in relation to specialist *Stamp* or *Book Sales* only) and 10 of the *Buyer's Agreement*. The same applies in respect of the *Seller*, as if references to us in this paragraph were substituted with references to the *Seller*.

15. BOOKS

As stated above, all *Lots* are sold on an "as is" basis, subject to all faults, imperfections and errors of *Description* save as set out below. However, you will be entitled to reject a *Book* in the circumstances set out in paragraph 11 of the *Buyers Agreement*. Please note that *Lots* comprising printed *Books*, unframed maps and bound manuscripts are not liable to VAT on the *Buyer's Premium*.

16. CLOCKS AND WATCHES

All *Lots* are sold "as is", and the absence of any reference to the condition of a clock or watch does not imply that the *Lot* is in good condition and without defects, repairs or restorations. Most clocks and watches have been repaired in the course of their normal lifetime and may now incorporate parts not original to them. Furthermore, *Bonhams* makes no representation or warranty that any clock or watch is in working order. As clocks and watches often contain fine and complex mechanisms, *Bidders* should be aware that a general service, change of battery or further repair work, for which the *Buyer* is solely responsible, may be necessary. *Bidders* should be aware that the importation of watches such as Rolex, Frank Muller and Corum into the United States is highly restricted. These watches may not be shipped to the USA and can only be imported personally.

17. FIREARMS – PROOF, CONDITION AND CERTIFICATION

Proof of Firearms

The term "proof exemption" indicates that a firearm has been examined at a Proof House, but not proved, as either (a) it was deemed of interest and not intended for use, or (b) ammunition was not available. In either case, the firearm must be regarded as unsafe to fire unless subsequently proved. Firearms proved for Black Powder should not be used with smokeless ammunition.

The term "Certificate of Unprovability" indicates that a firearm has been examined at a Proof House and is deemed both unsuitable for proof and use. Reproof is required before any such firearm is to be used.

Guns Sold as Parts

Barrels of guns sold as parts will only be made available for sleeving and measurements once rendered unserviceable according to the Gun Barrel Proof Act of 1968 to 1978 and the Rules of Proof.

Condition of Firearms

Comment in this *Catalogue* is restricted, in general, to exceptional condition and to those defects that might affect the immediate safety of a firearm in normal use. An intending *Bidder* unable to make technical examinations and assessments is recommended to seek advice from a gunmaker or from a modern firearms specialist. All prospective *Bidders* are advised to consult the ° of bore and wall-thickness measurements posted in the saleroom and available from the department. *Bidders* should note that guns are stripped only where there is a strong indication of a mechanical malfunction. Stripping is not, otherwise, undertaken. Guns intended for use should be stripped and cleaned beforehand. Hammer guns should have their rebound mechanisms checked before use. The safety mechanisms of all guns must be tested before use. All measurements are approximate.

Original Gun Specifications Derived from Gunmakers

The Sporting Gun Department endeavours to confirm a gun's original specification and date of manufacture with makers who hold their original records.

Licensing Requirements

Firearms Act 1968 as amended

Bonhams is constantly reviewing its procedures and would remind you that, in the case of firearms or shotguns subject to certification, to conform with current legislation, *Bonhams* is required to see, as appropriate, your original registered firearms dealer's certificate / shot gun certificate / firearm certificate / museum firearms licence / Section 5 authority or import licence (or details of any exemption from which you may benefit, for instance Crown servant status) for the firearm(s) you have purchased prior to taking full payment of the amount shown on your invoice. Should you not already be in possession of such an authority or exemption, you are required to initially pay a deposit of 95% of the total invoice with the balance of 5% payable on presentation of your valid certificate or licence showing your authority to hold the firearm(s) concerned.

Please be advised that if a successful *Bidder* is then unable to produce the correct paperwork, the *Lot(s)* will be reoffered by *Bonhams* in the next appropriate *Sale*, on standard terms for *Sellers*, and you will be responsible for any loss incurred by *Bonhams* on the original *Sale* to you.

In the case of RFD certificates and Section 5 authorities, we wish to keep an up-to-date copy on file. Please supply us with a Fax or photocopy. It would be helpful if you could send us an updated copy whenever your certificate or authority is renewed or changed.

Lots marked 'S1' and bearing red labels are Section 1 firearms and require a valid British Firearms certificate, RFD Licence or import licence.

Lots marked 'S2' and bearing blue labels are Section 2 firearms and require a valid British Shotgun certificate, RFD licence or import licence.

Lots marked 'S5' and bearing specially marked red labels are Section 5 prohibited firearms and require a valid Section 5 Authority or import licence.

Lots marked with a 'S58' and bearing yellow labels are for obsolete calibres and no licence is required unless ammunition is held.

Unmarked *Lots* require no licence.

Please do not hesitate to contact the Modern Sporting Gun Department should you have any queries.

Taxidermy and Related Items

On behalf of the *Seller* of these articles, *Bonhams* undertakes to comply fully with Cites and DEFRA regulations. *Buyers* are advised to inform themselves of all such regulations and should expect the exportation of items to take some time to arrange.

18. FURNITURE

Upholstered Furniture

Whilst we take every care in cataloguing furniture which has been upholstered we offer no *Guarantee* as to the originality of the wood covered by fabric or upholstery.

19. JEWELLERY

Gemstones

Historically many gemstones have been subjected to a variety of treatments to enhance their appearance. Sapphires and rubies are routinely heat treated to improve their colour and clarity, similarly emeralds are frequently treated with oils or resin for the same purpose. Other treatments such as staining, irradiation or coating may have been used on other gemstones. These treatments may be permanent, whilst others may need special care or re-treatment over the years to retain their appearance. *Bidders* should be aware that *Estimates* assume that gemstones may have been subjected to such treatments. A number of laboratories issue certificates that give more detailed *Descriptions* of gemstones. However there may not be consensus between different laboratories on the degrees, or types of treatment for any particular gemstone. In the event that *Bonhams* has been given or has obtained certificates for any *Lot* in the *Sale* these certificates will be disclosed in the *Catalogue*. Although, as a matter of policy, *Bonhams* endeavours to provide certificates from recognised laboratories for certain gemstones, it is not feasible to obtain certificates for each *Lot*. In the event that no certificate is published in the *Catalogue*, *Bidders* should assume that the gemstones may have been treated. Neither *Bonhams* nor the *Seller* accepts any liability for contradictions or differing certificates obtained by *Buyers* on any *Lots* subsequent to the *Sale*.

Estimated Weights

If a stone(s) weight appears within the body of the *Description* in capital letters, the stone(s) has been unmounted and weighed by *Bonhams*. If the weight of the stone(s) is stated to be approximate and does not appear in capital letters, the stone(s) has been assessed by us within its/their settings, and the stated weight is a statement of our opinion only. This information is given as a guide and *Bidders* should satisfy themselves with regard to this information as to its accuracy.

Signatures

1. A diamond brooch, by Kutchinsky

When the maker's name appears in the title, in *Bonhams'* opinion the piece is by that maker.

2. A diamond brooch, signed Kutchinsky

Has a signature that, in *Bonhams'* opinion, is authentic but may contain gemstones that are not original, or the piece may have been altered.

3. A diamond brooch, mounted by Kutchinsky

Has been created by the jeweller, in *Bonhams'* opinion, but using stones or designs supplied by the client.

20. PHOTOGRAPHS

Explanation of Catalogue Terms

- "Bill Brandt": in our opinion a work by the artist.
- "Attributed to Bill Brandt": in our opinion probably a work by the artist, but less certainty to authorship is expressed than in the preceding category.
- "Signed and/or titled and/or dated and/or inscribed": in our opinion the signature and/or title and/or date and/or inscription are in the artist's hand.
- "Signed and/or titled and/or dated and/or inscribed in another hand": in our opinion the signature and/or title and/or date and/or inscription have been added by another hand.
- The date given is that of the image (negative). Where no further date is given, this indicates that the photographic print is vintage (the term "vintage" may also be included in the *Lot Description*). A vintage photograph is one which was made within approximately 5-10 years of the negative. Where a second, later date appears, this refers to the date of printing. Where the exact printing date is not known, but understood to be later, "printed later" will appear in the *Lot Description*.
- Unless otherwise specified, dimensions given are those of the piece of paper on which the image is printed, including any margins. Some photographs may appear in the *Catalogue* without margins illustrated.
- All photographs are sold unframed unless stated in the *Lot Description*.

21. PICTURES

Explanation of Catalogue Terms

The following terms used in the *Catalogue* have the following meanings but are subject to the general provisions relating to *Descriptions* contained in the *Contract for Sale*:

- "Jacopo Bassano": in our opinion a work by the artist. When the artist's forename(s) is not known, a series of asterisks, followed by the surname of the artist, whether preceded by an initial or not, indicates that in our opinion the work is by the artist named;
- "Attributed to Jacopo Bassano": in our opinion probably a work by the artist but less certainty as to authorship is expressed than in the preceding category;
- "Studio/Workshop of Jacopo Bassano": in our opinion a work by an unknown hand in a studio of the artist which may or may not have been executed under the artist's direction;
- "Circle of Jacopo Bassano": in our opinion a work by a hand closely associated with a named artist but not necessarily his pupil;
- "Follower of Jacopo Bassano": in our opinion a work by a painter working in the artist's style, contemporary or nearly contemporary, but not necessarily his pupil;
- "Manner of Jacopo Bassano": in our opinion a work in the style of the artist and of a later date;
- "After Jacopo Bassano": in our opinion, a copy of a known work of the artist;
- "Signed and/or dated and/or inscribed": in our opinion the signature and/or date and/or inscription are from the hand of the artist;
- "Bears a signature and/or date and/or inscription": in our opinion the signature and/or date and/or inscription have been added by another hand.

22. PORCELAIN AND GLASS

Damage and Restoration

For your guidance, in our *Catalogues* we attempt to detail, as far as practicable, all significant defects, cracks and restoration. Such practicable *Descriptions* of damage cannot be definitive, and in providing *Condition Reports*, we cannot *Guarantee* that there are no other defects present which have not been mentioned. *Bidders* should satisfy themselves by inspection, as to the condition of each *Lot*. Please see the *Contract for Sale* printed in this *Catalogue*. Because of the difficulty in determining whether an item of glass has been repolished, in our *Catalogues* reference is only made to visible chips and cracks. No mention is made of repolishing, severe or otherwise.

23. VEHICLES

The Veteran Car Club of Great Britain

Dating Plates and Certificates

When mention is made of a Veteran Car Club Dating Plate or Dating Certificate in this *Catalogue*, it should be borne in mind that the Veteran Car Club of Great Britain using the services of Veteran Car Company Ltd, does from time to time, review cars already dated and, in some instances, where fresh evidence becomes available, the review can result in an alteration of date. Whilst the Club and Veteran Car Company Ltd make every effort to ensure accuracy, the date shown on the Dating Plate or Dating Certificate cannot be guaranteed as correct and intending purchasers should make their own enquiries as to the date of the car.

24. WINE

Lots which are lying under Bond and those liable to VAT may not be available for immediate collection.

Examining the wines

It is occasionally possible to provide a pre-Sale tasting for larger parcels (as defined below). This is generally limited to more recent and everyday drinking wines. Please contact the department for details.

It is not our policy to inspect every unopened case. In the case of wines older than 20 years the boxes will usually have been opened and levels and appearance noted in the *Catalogue* where necessary. You should make proper allowance for variations in ullage levels and conditions of corks, capsules and labels.

Corks and Ullages

Ullage refers to the space between the base of the cork and the wine. Ullage levels for Bordeaux shaped bottles are only normally noted when below the neck and for Burgundy, Alsace, German and Cognac shaped bottles when greater than 4 centimetres (cm). Acceptable ullage levels increase with age; generally acceptable levels are as follows:

Under 15 years old – into neck or less than 4cm
15 to 30 years old – top shoulder (ts) or up to 5cm
Over 30 years old – high shoulder (hs) or up to 6cm

It should be noted that ullages may change between publication of the *Catalogue* and the *Sale* and that corks may fail as a result of transporting the wine. We will only accept responsibility for *Descriptions* of condition at the time of publication of the *Catalogue* and cannot accept responsibility for any loss resulting from failure of corks either before or after this point.

Options to buy parcels

A parcel is a number of *Lots* of identical size of the same wine, bottle size and *Description*. The *Buyer* of any of these *Lots* has the option to accept some or all of the remaining *Lots* in the parcel at the same price, although such options will be at the *Auctioneer's* sole discretion. Absentee *Bidders* are, therefore, advised to bid on the first *Lot* in a parcel.

Wines in Bond

Wines lying in Bond are marked Δ. All *Lots* sold under Bond, and which the *Buyer* wishes to remain under Bond, will be invoiced without VAT or Duty on the *Hammer Price*. If the *Buyer* wishes to take the *Lot* as Duty paid, UK Excise Duty and VAT will be added to the *Hammer Price* on the invoice.

Buyers must notify *Bonhams* at the time of the *sale* whether they wish to take their wines under Bond or Duty paid. If a *Lot* is taken under Bond, the *Buyer* will be responsible for all VAT, Duty, clearance and other charges that may be payable thereon.

Buyers outside the UK must be aware that any forwarding agent appointed to export their purchases must have a movement certificate for *Lots* to be released under Bond.

Bottling Details and Case Terms

The following terms used in the *Catalogue* have the following meanings:

CB – Château bottled
DB – Domaine bottled
EstB – Estate bottled
BB – Bordeaux bottled
BE – Belgian bottled
FB – French bottled
GB – German bottled
OB – Oporto bottled
UK – United Kingdom bottled
owc – original wooden case
iwc – individual wooden case
oc – original carton

SYMBOLS

THE FOLLOWING SYMBOLS ARE USED TO DENOTE

- Y Subject to CITES regulations when exporting these items outside the EU, see clause 13.
- TP Objects displayed with a TP will be located at the Cadogan Tate warehouse and will only be available for collection from this location.
- W Objects displayed with a w will be located in the Bonhams Warehouse and will only be available for collection from this location.
- Δ Wines lying in Bond.
- AR An *Additional Premium* will be payable to us by the *Buyer* to cover our *Expenses* relating to payment of royalties under the Artists Resale Right Regulations 2006. See clause 7 for details.
- The *Seller* has been guaranteed a minimum price for the *Lot*, either by *Bonhams* or a third party. This may take the form of an irrevocable bid by a third party, who may make a financial gain on a successful *Sale* or a financial loss if unsuccessful.
- ▲ *Bonhams* owns the *Lot* either wholly or partially or may otherwise have an economic interest.
- Φ This lot contains or is made of ivory. The United States Government has banned the import of ivory into the USA.

*, †, *, G, Ω, α see clause 8, VAT, for details.

DATA PROTECTION – USE OF YOUR INFORMATION

Where we obtain any personal information about you, we shall only use it in accordance with the terms of our Privacy Policy (subject to any additional specific consent(s) you may have given at the time your information was disclosed). A copy of our Privacy Policy can be found on our *Website* www.bonhams.com or requested by post from Customer Services Department, 101 New Bond Street, London, W1S 1SR or by email from info@bonhams.com

APPENDIX 1

CONTRACT FOR SALE

IMPORTANT: These terms may be changed in advance of the Sale of the Lot to you, by the setting out of different terms in the Catalogue for the Sale and/or by placing an insert in the Catalogue and/or by notices at the Sale venue and/or on Bonhams' website, and/or by oral announcements before and during the Sale at the Sale venue. You should be alert to this possibility of changes and ask in advance of bidding if there have been any.

Under this contract the Seller's liability in respect of the quality of the Lot, its fitness for any purpose and its conformity with any Description is limited. You are strongly advised to examine the Lot for yourself and/or obtain an independent examination of it before you buy it.

1 THE CONTRACT

- 1.1 These terms and the relevant terms for *Bidders* and *Buyers* in the *Notice to Bidders* govern the *Contract for Sale of the Lot* by the *Seller* to the *Buyer*.
- 1.2 The Definitions and Glossary contained in Appendix 3 in the *Catalogue* are incorporated into this *Contract for Sale* and a separate copy can also be provided by *Bonhams* on request. Where words and phrases are used which are in the List of Definitions, they are printed in italics.
- 1.3 The *Seller* sells the *Lot* as the principal to the *Contract for Sale*, such contract being made between the *Seller* and you through *Bonhams* which acts in the sole capacity as the *Seller's* agent and not as an additional principal. However, if the *Catalogue* states that *Bonhams* sells the *Lot* as principal, or such a statement is made by an announcement by the *Auctioneer*, or by a notice at the *Sale*, or an insert in the *Catalogue*, then *Bonhams* is the *Seller* for the purposes of this agreement.
- 1.4 The contract is made on the fall of the *Auctioneer's* hammer in respect of the *Lot* when it is knocked down to you.

2 SELLER'S UNDERTAKINGS

- 2.1 The *Seller* undertakes to you that:
- 2.1.1 the *Seller* is the owner of the *Lot* or is duly authorised to sell the *Lot* by the owner;
- 2.1.2 save as disclosed in the *Entry* for the *Lot* in the *Catalogue*, the *Seller* sells the *Lot* with full title guarantee or, where the *Seller* is an executor, trustee, liquidator, receiver or administrator, with whatever right, title or interest he may have in the *Lot*;
- 2.1.3 except where the *Sale* is by an executor, trustee, liquidator, receiver or administrator the *Seller* is both legally entitled to sell the *Lot*, and legally capable of conferring on you quiet possession of the *Lot* and that the *Sale* conforms in every respect with the terms implied by the Sale of Goods Act 1979, Sections 12(1) and 12(2) (see the Definitions and Glossary);
- 2.1.4 the *Seller* has complied with all requirements, legal or otherwise, relating to any export or import of the *Lot*, and all duties and taxes in respect of the export or import of the *Lot* have (unless stated to the contrary in the *Catalogue* or announced by the *Auctioneer*) been paid and, so far as the *Seller* is aware, all third parties have complied with such requirements in the past;
- 2.1.5 subject to any alterations expressly identified as such made by announcement or notice at the *Sale* venue or by the *Notice to Bidders* or by an insert in the *Catalogue* or on the *Bonhams* website, the *Lot* corresponds with the *Contractual Description* of the *Lot*, being that part of the *Entry* about the *Lot* in the *Catalogue* which is in bold letters and (except for colour) with any photograph of the *Lot* in the *Catalogue*.

3 DESCRIPTIONS OF THE LOT

- 3.1 Paragraph 2.1.5 sets out what is the *Contractual Description* of the *Lot*. In particular, the *Lot* is not sold as corresponding with that part of the *Entry* in

	<p>the <i>Catalogue</i> which is not printed in bold letters, the remainder of which <i>Entry</i> merely sets out (on the <i>Seller's</i> behalf) <i>Bonhams'</i> opinion about the <i>Lot</i> and which is not part of the <i>Contractual Description</i> upon which the <i>Lot</i> is sold. Any statement or representation other than that part of the <i>Entry</i> referred to in paragraph 2.1.5 (together with any express alteration to it as referred to in paragraph 2.1.5), including any <i>Description</i> or <i>Estimate</i>, whether made orally or in writing, including in the <i>Catalogue</i> or on <i>Bonhams' Website</i>, or by conduct, or otherwise, and whether by or on behalf of the <i>Seller</i> or <i>Bonhams</i> and whether made prior to or during the <i>Sale</i>, is not part of the <i>Contractual Description</i> upon which the <i>Lot</i> is sold.</p>	<p>8.1.5 to take legal proceedings against you for any sum due under the <i>Contract for Sale</i> and/or damages for breach of contract;</p> <p>8.1.6 to be paid interest on any monies due (after as well as before judgement or order) at the annual rate of 5% per annum above the base rate of National Westminster Bank Plc from time to time to be calculated on a daily basis from the date upon which such monies become payable until the date of actual payment;</p>
<p>3.2 Except as provided in paragraph 2.1.5, the <i>Seller</i> does not make or give and does not agree to make or give any contractual promise, undertaking, obligation, guarantee, warranty, or representation of fact, or undertake any duty of care, in relation to any <i>Description</i> of the <i>Lot</i> or any <i>Estimate</i> in relation to it, nor of the accuracy or completeness of any <i>Description</i> or <i>Estimate</i> which may have been <i>Bonhams</i>. No such <i>Description</i> or <i>Estimate</i> is incorporated into this <i>Contract for Sale</i>.</p>	<p>7 COLLECTION OF THE LOT</p> <p>7.1 Unless otherwise agreed in writing with you by <i>Bonhams</i>, the <i>Lot</i> will be released to you or to your order only when <i>Bonhams</i> has received cleared funds to the amount of the full <i>Purchase Price</i> and all other sums owed by you to the <i>Seller</i> and to <i>Bonhams</i>.</p> <p>7.2 The <i>Seller</i> is entitled to withhold possession from you of any other <i>Lot</i> he has sold to you at the same or at any other <i>Sale</i> and whether currently in <i>Bonhams'</i> possession or not, until payment in full and in cleared funds of the <i>Purchase Price</i> and all other sums due to the <i>Seller</i> and/or <i>Bonhams</i> in respect of the <i>Lot</i>.</p>	<p>8.1.7 to repossess the <i>Lot</i> (or any part thereof) which has not become your property, and for this purpose (unless the <i>Buyer</i> buys the <i>Lot</i> as a <i>Consumer</i> from the <i>Seller</i> selling in the course of a <i>Business</i>) you hereby grant an irrevocable licence to the <i>Seller</i> by himself and to his servants or agents to enter upon all or any of your premises (with or without vehicles) during normal <i>Business</i> hours to take possession of the <i>Lot</i> or part thereof;</p> <p>8.1.8 to retain possession of any other property sold to you by the <i>Seller</i> at the <i>Sale</i> or any other auction or by private treaty until all sums due under the <i>Contract for Sale</i> shall have been paid in full in cleared funds;</p>
<p>4 FITNESS FOR PURPOSE AND SATISFACTORY QUALITY</p> <p>4.1 The <i>Seller</i> does not make and does not agree to make any contractual promise, undertaking, obligation, guarantee, warranty, or representation of fact in relation to the satisfactory quality of the <i>Lot</i> or its fitness for any purpose.</p> <p>4.2 The <i>Seller</i> will not be liable for any breach of any undertaking, whether implied by the Sale of Goods Act 1979 or otherwise, as to the satisfactory quality of the <i>Lot</i> or its fitness for any purpose.</p>	<p>7.3 You should note that <i>Bonhams</i> has reserved the right not to release the <i>Lot</i> to you until its investigations under paragraph 3.11 of the Buyers' agreement set out in Appendix 2 have been completed to <i>Bonhams'</i> satisfaction.</p> <p>7.4 You will collect and remove the <i>Lot</i> at your own expense from <i>Bonhams'</i> custody and/ or control or from the <i>Storage Contractor's</i> custody in accordance with <i>Bonhams'</i> instructions or requirements.</p> <p>7.5 You will be wholly responsible for packing, handling and transport of the <i>Lot</i> on collection and for complying with all import or export regulations in connection with the <i>Lot</i>.</p>	<p>8.1.9 to retain possession of, and on three months' written notice to sell, <i>Without Reserve</i>, any of your other property in the possession of the <i>Seller</i> and/or of <i>Bonhams</i> (as bailee for the <i>Seller</i>) for any purpose (including, without limitation, other goods sold to you) and to apply any monies due to you as a result of such <i>Sale</i> in satisfaction or part satisfaction of any amounts owed to the <i>Seller</i> or to <i>Bonhams</i>; and</p> <p>8.1.10 so long as such goods remain in the possession of the <i>Seller</i> or <i>Bonhams</i> as its bailee, to rescind the contract for the <i>Sale</i> of any other goods sold to you by the <i>Seller</i> at the <i>Sale</i> or at any other auction or by private treaty and apply any monies received from you in respect of such goods in part or full satisfaction of any amounts owed to the <i>Seller</i> or to <i>Bonhams</i> by you.</p>
<p>5 RISK, PROPERTY AND TITLE</p> <p>5.1 Risk in the <i>Lot</i> passes to you after 7 days from the day upon which it is knocked down to you on the fall of the <i>Auctioneer's</i> hammer in respect of the <i>Lot</i>, or upon collection of the <i>Lot</i> if earlier. The <i>Seller</i> will not be responsible thereafter for the <i>Lot</i> prior to you collecting it from <i>Bonhams</i> or the <i>Storage Contractor</i>, with whom you have separate contract(s) as <i>Buyer</i>. You will indemnify the <i>Seller</i> and keep the <i>Seller</i> fully indemnified from and against all claims, proceedings, costs, expenses and losses arising in respect of any injury, loss and damage caused to the <i>Lot</i> beyond 7 days from the day of the fall of the <i>Auctioneer's</i> hammer until you obtain full title to it.</p>	<p>7.6 You will be wholly responsible for any removal, storage or other charges or expenses incurred by the <i>Seller</i> if you do not remove the <i>Lot</i> in accordance with this paragraph 7 and will indemnify the <i>Seller</i> against all charges, costs, including any legal costs and fees, expenses and losses suffered by the <i>Seller</i> by reason of your failure to remove the <i>Lot</i> including any charges due under any <i>Storage Contract</i>. All such sums due to the <i>Seller</i> will be payable on demand.</p> <p>8 FAILURE TO PAY FOR THE LOT</p>	<p>8.2 You agree to indemnify the <i>Seller</i> against all legal and other costs of enforcement, all losses and other expenses and costs (including any monies payable to <i>Bonhams</i> in order to obtain the release of the <i>Lot</i>) incurred by the <i>Seller</i> (whether or not court proceedings will have been issued) as a result of <i>Bonhams</i> taking steps under this paragraph 8 on a full indemnity basis together with interest thereon (after as well as before judgement or order) at the rate specified in paragraph 8.1.6 from the date upon which the <i>Seller</i> becomes liable to pay the same until payment by you.</p>
<p>5.2 Title to the <i>Lot</i> remains in and is retained by the <i>Seller</i> until the <i>Purchase Price</i> and all other sums payable by you to <i>Bonhams</i> in relation to the <i>Lot</i> have been paid in full to, and received in cleared funds by, <i>Bonhams</i>.</p>	<p>8.1 If the <i>Purchase Price</i> for a <i>Lot</i> is not paid to <i>Bonhams</i> in full in accordance with the <i>Contract for Sale</i>, the <i>Seller</i> will be entitled, with the prior written agreement of <i>Bonhams</i> but without further notice to you, to exercise one or more of the following rights (whether through <i>Bonhams</i> or otherwise):</p>	<p>8.3 On any resale of the <i>Lot</i> under paragraph 8.1.2, the <i>Seller</i> will account to you in respect of any balance remaining from any monies received by him or on his behalf in respect of the <i>Lot</i>, after the payment of all sums due to the <i>Seller</i> and to <i>Bonhams</i>, within 28 days of receipt of such monies by him or on his behalf.</p>
<p>6 PAYMENT</p> <p>6.1 Your obligation to pay the <i>Purchase Price</i> arises when the <i>Lot</i> is knocked down to you on the fall of the <i>Auctioneer's</i> hammer in respect of the <i>Lot</i>.</p> <p>6.2 Time will be of the essence in relation to payment of the <i>Purchase Price</i> and all other sums payable by you to <i>Bonhams</i>. Unless agreed in writing with you by <i>Bonhams</i> on the <i>Seller's</i> behalf (in which case you must comply with the terms of that agreement), all such sums must be paid to <i>Bonhams</i> by you in the currency in which the <i>Sale</i> was conducted by</p>	<p>8.1.1 to terminate immediately the <i>Contract for Sale</i> of the <i>Lot</i> for your breach of contract;</p> <p>8.1.2 to resell the <i>Lot</i> by auction, private treaty or any other means on giving seven days' written notice to you of the intention to resell;</p> <p>8.1.3 to retain possession of the <i>Lot</i>;</p> <p>8.1.4 to remove and store the <i>Lot</i> at your expense;</p>	<p>9 THE SELLER'S LIABILITY</p> <p>9.1 The <i>Seller</i> will not be liable for any injury, loss or damage caused by the <i>Lot</i> after the fall of the <i>Auctioneer's</i> hammer in respect of the <i>Lot</i>.</p> <p>9.2 Subject to paragraph 9.3 below, except for breach of the express undertaking provided in paragraph 2.1.5, the <i>Seller</i> will not be liable for any breach of any term</p>

that the *Lot* will correspond with any *Description* applied to it by or on behalf of the *Seller*, whether implied by the Sale of Goods Act 1979 or otherwise.

- 9.3 Unless the *Seller* sells the *Lot* in the course of a *Business* and the *Buyer* buys it as a *Consumer*,
- 9.3.1 the *Seller* will not be liable (whether in negligence, other tort, breach of contract or statutory duty or in restitution or under the Misrepresentation Act 1967, or in any other way) for any lack of conformity with, or inaccuracy, error, misdescription or omission in any *Description* of the *Lot* or any *Entry* or *Estimate* in relation to the *Lot* made by or on behalf of the *Seller* (whether made in writing, including in the *Catalogue*, or on the *Website*, or orally, or by conduct or otherwise) and whether made before or after this agreement or prior to or during the *Sale*;
- 9.3.2 the *Seller* will not be liable for any loss of *Business*, *Business* profits or revenue or income or for loss of reputation or for disruption to *Business* or wasted time on the part of the *Buyer* or of the *Buyer's* management or staff or, for any indirect losses or consequential damages of any kind, irrespective in any case of the nature, volume or source of the loss or damage alleged to be suffered, and irrespective of whether the said loss or damage is caused by or claimed in respect of any negligence, other tort, breach of contract, statutory duty, restitutionary claim or otherwise;
- 9.3.3 in any circumstances where the *Seller* is liable to you in respect of the *Lot*, or any act, omission, statement, or representation in respect of it, or this agreement or its performance, and whether in damages, for an indemnity or contribution or for a restitutionary remedy or in any way whatsoever, the *Seller's* liability will be limited to payment of a sum which will not exceed by way of maximum the amount of the *Purchase Price* of the *Lot* irrespective in any case of the nature, volume or source of any loss or damage alleged to be suffered or sum claimed as due, and irrespective of whether the liability arises from any negligence, other tort, breach of contract, statutory duty, bailee's duty, restitutionary claim or otherwise.
- 9.4 Nothing set out in paragraphs 9.1 to 9.3 above will be construed as excluding or restricting (whether directly or indirectly) any person's liability or excluding or restricting any person's rights or remedies in respect of (i) fraud, or (ii) death or personal injury caused by the *Seller's* negligence (or any person under the *Seller's* control or for whom the *Seller* is legally responsible), or (iii) acts or omissions for which the *Seller* is liable under the Occupiers Liability Act 1957, or (iv) any other liability to the extent the same may not be excluded or restricted as a matter of law.

10 MISCELLANEOUS

- 10.1 You may not assign either the benefit or burden of the *Contract for Sale*.
- 10.2 The *Seller's* failure or delay in enforcing or exercising any power or right under the *Contract for Sale* will not operate or be deemed to operate as a waiver of his rights under it except to the extent of any express waiver given to you in writing. Any such waiver will not affect the *Seller's* ability subsequently to enforce any right arising under the *Contract for Sale*.
- 10.3 If either party to the *Contract for Sale* is prevented from performing that party's respective obligations under the *Contract for Sale* by circumstances beyond its reasonable control or if performance of its obligations would by reason of such circumstances give rise to a significantly increased financial

cost to it, that party will not, for so long as such circumstances prevail, be required to perform such obligations. This paragraph does not apply to the obligations imposed on you by paragraph 6.

- 10.4 Any notice or other communication to be given under the *Contract for Sale* must be in writing and may be delivered by hand or sent by first class post or air mail or fax transmission, if to the *Seller*, addressed c/o *Bonhams* at its address or fax number in the *Catalogue* (marked for the attention of the Company Secretary), and if to you to the address or fax number of the *Buyer* given in the *Bidding Form* (unless notice of any change of address is given in writing). It is the responsibility of the sender of the notice or communication to ensure that it is received in a legible form within any applicable time period.
- 10.5 If any term or any part of any term of the *Contract for Sale* is held to be unenforceable or invalid, such unenforceability or invalidity will not affect the enforceability and validity of the remaining terms or the remainder of the relevant term.
- 10.6 References in the *Contract for Sale* to *Bonhams* will, where appropriate, include reference to *Bonhams'* officers, employees and agents and to any subsidiary of *Bonhams Holdings Limited* and to its officers, employees and agents.
- 10.7 The headings used in the *Contract for Sale* are for convenience only and will not affect its interpretation.
- 10.8 In the *Contract for Sale* "including" means "including, without limitation".
- 10.9 References to the singular will include reference to the plural (and vice versa) and reference to any one gender will include reference to the other genders.
- 10.10 Reference to a numbered paragraph is to a paragraph of the *Contract for Sale*.
- 10.11 Save as expressly provided in paragraph 10.12 nothing in the *Contract for Sale* confers (or purports to confer) on any person who is not a party to the *Contract for Sale* any benefit conferred by, or the right to enforce any term of, the *Contract for Sale*.
- 10.12 Where the *Contract for Sale* confers an immunity from, and/or an exclusion or restriction of, the responsibility and/or liability of the *Seller*, it will also operate in favour and for the benefit of *Bonhams*, *Bonhams'* holding company and the subsidiaries of such holding company and the successors and assigns of *Bonhams* and of such companies and of any officer, employee and agent of *Bonhams* and such companies, each of whom will be entitled to rely on the relevant immunity and/or exclusion and/or restriction within and for the purposes of Contracts (Rights of Third Parties) Act 1999, which enables the benefit of a contract to be extended to a person who is not a party to the contract, and generally at law.

11 GOVERNING LAW

All transactions to which the *Contract for Sale* applies and all connected matters will be governed by and construed in accordance with the laws of that part of the United Kingdom where the *Sale* takes place and the *Seller* and you each submit to the exclusive jurisdiction of the courts of that part of the United Kingdom, save that the *Seller* may bring proceedings against you in any other court of competent jurisdiction to the extent permitted by the laws of the relevant jurisdiction. *Bonhams* has a complaints procedure in place.

APPENDIX 2

BUYER'S AGREEMENT WITH BONHAMS

IMPORTANT: These terms may be changed in advance of the *Sale* of the *Lot* to you, by the setting out of different terms in the *Catalogue* for the *Sale* and/or by placing an insert in the *Catalogue* and/or by notices at the *Sale* venue and/or by oral announcements before and during the *Sale* at the *Sale* venue. You should be alert to this possibility of changes and ask in advance of bidding if there have been any.

1 THE CONTRACT

- 1.1 These terms govern the contract between *Bonhams* personally and the *Buyer*, being the person to whom a *Lot* has been knocked down by the *Auctioneer*.
- 1.2 The Definitions and Glossary contained in Appendix 3 to the *Catalogue* for the *Sale* are incorporated into this agreement and a separate copy can also be provided by us on request. Where words and phrases which are defined in the List of Definitions are used in this agreement, they are printed in italics. Reference is made in this agreement to information printed in the *Notice to Bidders*, printed in the *Catalogue* for the *Sale*, and where such information is referred to it is incorporated into this agreement.
- 1.3 Except as specified in paragraph 4 of the *Notice to Bidders* the *Contract for Sale* of the *Lot* between you and the *Seller* is made on the fall of the *Auctioneer's* hammer in respect of the *Lot*, when it is knocked down to you. At that moment a separate contract is also made between you and *Bonhams* on the terms in this *Buyer's Agreement*.
- 1.4 We act as agents for the *Seller* and are not answerable or personally responsible to you for any breach of contract or other default by the *Seller*, unless *Bonhams* sells the *Lot* as principal.
- 1.5 Our personal obligations to you are governed by this agreement and we agree, subject to the terms below, to the following obligations:
- 1.5.1 we will, until the date and time specified in the *Notice to Bidders* or otherwise notified to you, store the *Lot* in accordance with paragraph 5;
- 1.5.2 subject to any power of the *Seller* or us to refuse to release the *Lot* to you, we will release the *Lot* to you in accordance with paragraph 4 once you have paid to us, in cleared funds, everything due to us and the *Seller*;
- 1.5.3 we will provide guarantees in the terms set out in paragraphs 9 and 10.
- 1.6 We do not make or give and do not agree to make or give any contractual promise, undertaking, obligation, *Guarantee*, warranty, representation of fact in relation to any *Description* of the *Lot* or any *Estimate* in relation to it, nor of the accuracy or completeness of any *Description* or *Estimate* which may have been made by us or on our behalf or by or on behalf of the *Seller* (whether made orally or in writing, including in the *Catalogue* or on *Bonhams' Website*, or by conduct, or otherwise), and whether made before or after this agreement or prior to or during the *Sale*. No such *Description* or *Estimate* is incorporated into this agreement between you and us. Any such *Description* or *Estimate*, if made by us or on our behalf, was (unless *Bonhams* itself sells the *Lot* as principal) made as agent on behalf of the *Seller*.

2	PERFORMANCE OF THE CONTRACT FOR SALE	or terrorist financing, and that you not under investigation for neither have been charged nor convicted in connection with any criminal activity.	paragraph 4.2. These storage fees form part of our <i>Expenses</i> .
	You undertake to us personally that you will observe and comply with all your obligations and undertakings to the <i>Seller</i> under the <i>Contract for Sale</i> in respect of the <i>Lot</i> .		
3	PAYMENT AND BUYER WARRANTIES		
3.1	Unless agreed in writing between you and us or as otherwise set out in the <i>Notice to Bidders</i> , you must pay to us by not later than 4.30pm on the second working day following the <i>Sale</i> :	3.10 Where you are acting as agent for another party ("your Principal"), you undertake and warrant that:	4.5 Until you have paid the <i>Purchase Price</i> and any <i>Expenses</i> in full the <i>Lot</i> will either be held by us as agent on behalf of the <i>Seller</i> or held by the <i>Storage Contractor</i> as agent on behalf of the <i>Seller</i> and ourselves on the terms contained in the <i>Storage Contract</i> .
3.1.1	the <i>Purchase Price</i> for the <i>Lot</i> ;	3.10.1 you have conducted suitable customer due diligence into your Principal under applicable Sanctions and Anti-Money Laundering laws and regulations;	
3.1.2	a <i>Buyer's Premium</i> in accordance with the rates set out in the <i>Notice to Bidders</i> on each lot, and	3.10.2 your Principal is not a Sanctioned Party and not owned, partially owned or controlled by a Sanctioned Party, and you have no reason to suspect that your Principal has been charged or convicted with, money laundering, terrorism or other crimes;	4.6 You undertake to comply with the terms of any <i>Storage Contract</i> and in particular to pay the charges (and all costs of moving the <i>Lot</i> into storage) due under any <i>Storage Contract</i> . You acknowledge and agree that you will not be able to collect the <i>Lot</i> from the <i>Storage Contractor's</i> premises until you have paid the <i>Purchase Price</i> , any <i>Expenses</i> and all charges due under the <i>Storage Contract</i> .
3.1.3	if the <i>Lot</i> is marked [AR], an <i>Additional Premium</i> which is calculated and payable in accordance with the <i>Notice to Bidders</i> together with VAT on that sum if applicable so that all sums due to us are cleared funds by the seventh working day after the <i>Sale</i> .	3.10.3 funds used for your or your Principal's purchase are not connected with or derived from any criminal activity, including without limitation tax evasion, money laundering or terrorist financing;	4.7 You will be wholly responsible for packing, handling and transport of the <i>Lot</i> on collection and for complying with all import or export regulations in connection with the <i>Lot</i> .
3.2	You must also pay us on demand any <i>Expenses</i> payable pursuant to this agreement.	3.10.4 items purchased by you and your Principal through Bonhams are not being purchased or to be used in any way connected with or to facilitate breaches of applicable Tax, Anti-Money Laundering or Anti-Terrorism laws and regulations; and	4.8 You will be wholly responsible for any removal, storage, or other charges for any <i>Lot</i> not removed in accordance with paragraph 4.2, payable at our current rates, and any <i>Expenses</i> we incur (including any charges due under the <i>Storage Contract</i>), all of which must be paid by you on demand and in any event before any collection of the <i>Lot</i> by you or on your behalf.
3.3	All payments to us must be made in the currency in which the <i>Sale</i> was conducted, using, unless otherwise agreed by us in writing, one of the methods of payment set out in the <i>Notice to Bidders</i> . Our invoices will only be addressed to the registered <i>Bidder</i> unless the <i>Bidder</i> is acting as an agent for a named principal and we have approved that arrangement, in which case we will address the invoice to the principal.	3.10.5 that you consent to <i>Bonhams</i> relying upon your customer due diligence, undertaking to retain records of your due diligence for at least 5 years and to make such due diligence records available for inspection by an independent auditor in the event we request you to do so.	
3.4	Unless otherwise stated in this agreement all sums payable to us will be subject to VAT at the appropriate rate and VAT will be payable by you on all such sums.	3.11 We reserve the rights to make enquiries about any person transacting with us and to identify the source of any funds received from you. In the event we have not completed our investigations in respect of anti-terrorism financing, anti-money laundering or other financial and identity checks concerning either you or the <i>Seller</i> , to our satisfaction at our discretion, we shall be entitled to retain <i>Lots</i> and/or proceeds of <i>Sale</i> , postpone or cancel any sale and to take any other actions required or permitted under applicable law, without liability to you.	5 STORING THE LOT
3.5	We may deduct and retain for our own benefit from the monies paid by you to us the <i>Buyer's Premium</i> , the <i>Commission</i> payable by the <i>Seller</i> in respect of the <i>Lot</i> , any <i>Expenses</i> and VAT and any interest earned and/or incurred until payment to the <i>Seller</i> .		We agree to store the <i>Lot</i> until the earlier of your removal of the <i>Lot</i> or until the time and date set out in the <i>Notice to Bidders</i> , on the Sale Information Page or at the back of the catalogue (or if no date is specified, by 4.30pm on the seventh day after the <i>Sale</i>) and, subject to paragraphs 3, 6 and 10, to be responsible as <i>bailee</i> to you for damage to or the loss or destruction of the <i>Lot</i> (notwithstanding that it is not your property before payment of the <i>Purchase Price</i>). If you do not collect the <i>Lot</i> before the time and date set out in the <i>Notice to Bidders</i> (or if no date is specified, by 4.30pm on the seventh day after the <i>Sale</i>) we may remove the <i>Lot</i> to another location, the details of which will usually be set out in the relevant section of the <i>Catalogue</i> . If you have not paid for the <i>Lot</i> in accordance with paragraph 3, and the <i>Lot</i> is moved to any third party's premises, the <i>Lot</i> will be held by such third party strictly to <i>Bonhams'</i> order and we will retain our lien over the <i>Lot</i> until we have been paid in full in accordance with paragraph 3.
3.6	Time will be of the essence in relation to any payment payable to us. If you do not pay the <i>Purchase Price</i> , or any other sum due to us in accordance with this paragraph 3, we will have the rights set out in paragraph 7 below.		
3.7	Where a number of <i>Lots</i> have been knocked down to you, any monies we receive from you will be applied firstly pro-rata to pay the <i>Purchase Price</i> of each <i>Lot</i> and secondly pro-rata to pay all amounts due to <i>Bonhams</i> .		
3.8	You warrant that neither you nor - if you are a company, your directors, officers or your owner or their directors or shareholders - are an individual or an entity that is, or is owned or controlled by individuals or entities that are:	4 COLLECTION OF THE LOT	6 RESPONSIBILITY FOR THE LOT
3.8.1	the subject of any sanctions administered or enforced by the U.S. Department of the Treasury's Office of Foreign Assets Control, the U.S. Department of State, the United Nations Security Council, the European Union, Her Majesty's Treasury, or other relevant sanctions authority ("Sanctions" and a "Sanctioned Party"); or	4.1 Subject to any power of the <i>Seller</i> or us to refuse to release the <i>Lot</i> to you, once you have paid to us; in cleared funds, everything due to the <i>Seller</i> and to us, and once we have completed our investigations under paragraph 3.11 we will release the <i>Lot</i> to you or as you may direct us in writing. The <i>Lot</i> will only be released on production of a buyer collection document, obtained from our cashier's office.	6.1 Title (ownership) in the <i>Lot</i> pass to you on payment of the <i>Purchase Price</i> to us in full in cleared funds, although we reserve the right not to release the <i>Lot</i> to you until our investigations have been completed to our satisfaction under paragraph 3.11.
3.8.2	located, organised or resident in a country or territory that is, or whose government is, the subject of Sanctions, including without limitation, Iran, North Korea, Sudan and Syria.	4.2 You must collect and remove the <i>Lot</i> at your own expense by the date and time specified in the <i>Notice to Bidders</i> , or if no date is specified, by 4.30pm on the seventh day after the <i>Sale</i> .	6.2 Please note that under the <i>Contract for Sale</i> , the risk in the <i>Lot</i> passes to you after 7 days from the day upon which it is knocked down to you or upon collection of the <i>Lot</i> if earlier, and you are advised to obtain insurance in respect of the <i>Lot</i> as soon as possible after the <i>Sale</i> .
3.9	You warrant that the funds being used for your purchase have no link with criminal activity including without limitation money laundering, tax evasion	4.4 If you have not collected the <i>Lot</i> by the date specified in the <i>Notice to Bidders</i> , you authorise us, acting in this instance as your agent and on your behalf, to enter into a contract (the " <i>Storage Contract</i> ") with the <i>Storage Contractor</i> for the storage of the <i>Lot</i> on the then current standard terms and conditions agreed between <i>Bonhams</i> and the <i>Storage Contractor</i> (copies of which are available on request). If the <i>Lot</i> is stored at our premises storage fees at our current daily rates (currently a minimum of £3 plus VAT per <i>Lot</i> per day) will be payable from the expiry of the period referred to in	7 FAILURE TO PAY OR TO REMOVE THE LOT AND PART PAYMENTS
			7.1 If all sums payable to us are not so paid in full at the time they are due and/or the <i>Lot</i> is not removed in accordance with this agreement, we will (without further notice to you unless otherwise provided below), be entitled to exercise one or more of the following rights (without prejudice to any rights we may exercise on behalf of the <i>Seller</i>):

7.1.1	to terminate this agreement immediately for your breach of contract;	7.4	We will account to you in respect of any balance we hold remaining from any monies received by us in respect of any <i>Sale</i> of the <i>Lot</i> under our rights under this paragraph 7 after the payment of all sums due to us and/or the <i>Seller</i> within 28 days of receipt by us of all such sums paid to us.	9.3.2	it can be established that the <i>Lot</i> is a <i>Forgery</i> only by means of a process not generally accepted for use until after the date on which the <i>Catalogue</i> was published or by means of a process which it was unreasonable in all the circumstances for us to have employed.
7.1.2	to retain possession of the <i>Lot</i> ;				
7.1.3	to remove, and/or store the <i>Lot</i> at your expense;				
7.1.4	to take legal proceedings against you for payment of any sums payable to us by you (including the <i>Purchase Price</i>) and/or damages for breach of contract;	8 CLAIMS BY OTHER PERSONS IN RESPECT OF THE LOT		9.4	You authorise us to carry out such processes and tests on the <i>Lot</i> as we in our absolute discretion consider necessary to satisfy ourselves that the <i>Lot</i> is or is not a <i>Forgery</i> .
7.1.5	to be paid interest on any monies due to us (after as well as before judgement or order) at the annual rate of 5% per annum above the base lending rate of National Westminster Bank Plc from time to time to be calculated on a daily basis from the date upon which such monies become payable until the date of actual payment;	8.1	Whenever it becomes apparent to us that the <i>Lot</i> is the subject of a claim by someone other than you and other than the <i>Seller</i> (or that such a claim can reasonably be expected to be made), we may, at our absolute discretion, deal with the <i>Lot</i> in any manner which appears to us to recognise the legitimate interests of ourselves and the other parties involved and lawfully to protect our position and our legitimate interests. Without prejudice to the generality of the discretion and by way of example, we may:	9.5	If we are satisfied that a <i>Lot</i> is a <i>Forgery</i> we will (as principal) purchase the <i>Lot</i> from you and you will transfer the title to the <i>Lot</i> in question to us, with full title guarantee, free from any liens, charges, encumbrances and adverse claims, in accordance with the provisions of Sections 12(1) and 12(2) of the Sale of Goods Act 1979 and we will pay to you an amount equal to the sum of the <i>Purchase Price</i> , <i>Buyer's Premium</i> , <i>VAT</i> and <i>Expenses</i> paid by you in respect of the <i>Lot</i> .
7.1.6	to repossess the <i>Lot</i> (or any part thereof) which has not become your property, and for this purpose (unless you buy the <i>Lot</i> as a <i>Consumer</i>) you hereby grant an irrevocable licence to us, by ourselves, our servants or agents, to enter upon all or any of your premises (with or without vehicles) during normal business hours to take possession of any <i>Lot</i> or part thereof;	8.1.1	retain the <i>Lot</i> to investigate any question raised or reasonably expected by us to be raised in relation to the <i>Lot</i> ; and/or	9.6	The benefit of paragraph 9 is personal to, and incapable of assignment by, you.
7.1.7	to sell the <i>Lot Without Reserve</i> by auction, private treaty or any other means on giving you three months' written notice of our intention to do so;	8.1.2	deliver the <i>Lot</i> to a person other than you; and/or	9.7	If you sell or otherwise dispose of your interest in the <i>Lot</i> , all rights and benefits under this paragraph will cease.
7.1.8	to retain possession of any of your other property in our possession for any purpose (including, without limitation, other goods sold to you or with us for <i>Sale</i>) until all sums due to us have been paid in full;	8.1.3	commence interpleader proceedings or seek any other order of any court, mediator, arbitrator or government body; and/or	9.8	Paragraph 9 does not apply to a <i>Lot</i> made up of or including a Chinese painting or Chinese paintings, a motor vehicle or motor vehicles, a <i>Stamp</i> or <i>Stamps</i> or a <i>Book</i> or <i>Books</i> .
7.1.9	to apply any monies received from you for any purpose whether at the time of your default or at any time thereafter in payment or part payment of any sums due to us by you under this agreement;	8.1.4	require an indemnity and/or security from you in return for pursuing a course of action agreed to by you.	10 OUR LIABILITY	
7.1.10	on three months' written notice to sell, <i>Without Reserve</i> , any of your other property in our possession or under our control for any purpose (including other goods sold to you or with us for <i>Sale</i>) and to apply any monies due to you as a result of such <i>Sale</i> in payment or part payment of any amounts owed to us;	8.2	The discretion referred to in paragraph 8.1:	10.1	We will not be liable whether in negligence, other tort, breach of contract or statutory duty or in restitution or under the Misrepresentation Act 1967 or in any other way for lack of conformity with or any inaccuracy, error, misdescription or omission in any <i>Description</i> of the <i>Lot</i> or any <i>Entry</i> or <i>Estimate</i> in respect of it, made by us or on our behalf or by or on behalf of the <i>Seller</i> (whether made in writing, including in the <i>Catalogue</i> , or on the <i>Bonhams' Website</i> , or orally, or by conduct or otherwise) and whether made before or after this agreement or prior to or during the <i>Sale</i> .
7.1.11	refuse to allow you to register for a future <i>Sale</i> or to reject a bid from you at any future <i>Sale</i> or to require you to pay a deposit before any bid is accepted by us at any future <i>Sale</i> in which case we will be entitled to apply such deposit in payment or part payment, as the case may be, of the <i>Purchase Price</i> of any <i>Lot</i> of which you are the <i>Buyer</i> .	8.2.1	may be exercised at any time during which we have actual or constructive possession of the <i>Lot</i> , or at any time after such possession, where the cessation of such possession has occurred by reason of any decision, order or ruling of any court, mediator, arbitrator or government body; and	10.2	Our duty to you while the <i>Lot</i> is at your risk and/or your property and in our custody and/or control is to exercise reasonable care in relation to it, but we will not be responsible for damage to the <i>Lot</i> or to other persons or things caused by:
7.1.12	having made reasonable efforts to inform you, to release your name and address to the <i>Seller</i> , so they might take appropriate steps to recover the amounts due and legal costs associated with such steps.	8.2.2	will not be exercised unless we believe that there exists a serious prospect of a good arguable case in favour of the claim.	10.2.1	handling the <i>Lot</i> if it was affected at the time of <i>Sale</i> to you by woodworm and any damage is caused as a result of it being affected by woodworm; or
7.2	You agree to indemnify us against all legal and other costs, all losses and all other <i>Expenses</i> (whether or not court proceedings will have been issued) incurred by us as a result of our taking steps under this paragraph 7 on a full indemnity basis together with interest thereon (after as well as before judgement or order) at the rate specified in paragraph 7.1.5 from the date upon which we become liable to pay the same until payment by you.	9 FORGERIES		10.2.2	changes in atmospheric pressure; nor will we be liable for:
7.3	If you pay us only part of the sums due to us such payment shall be applied firstly to the <i>Purchase Price</i> of the <i>Lot</i> (or where you have purchased more than one <i>Lot</i> pro-rata towards the <i>Purchase Price</i> of each <i>Lot</i>) and secondly to the <i>Buyer's Premium</i> (or where you have purchased more than one <i>Lot</i> pro-rata to the <i>Buyer's Premium</i> on each <i>Lot</i>) and thirdly to any other sums due to us.	9.1	We undertake a personal responsibility for any <i>Forgery</i> in accordance with the terms of this paragraph 9.	10.2.3	damage to tension stringed musical instruments; or
		9.2	Paragraph 9 applies only if:	10.2.4	damage to gilded picture frames, plaster picture frames or picture frame glass; and if the <i>Lot</i> is or becomes dangerous, we may dispose of it without notice to you in advance in any manner we think fit and we will be under no liability to you for doing so.
		9.2.1	your name appears as the named person to whom the original invoice was made out by us in respect of the <i>Lot</i> and that invoice has been paid; and	10.3.1	We will not be liable to you for any loss of <i>Business</i> , <i>Business</i> profits, revenue or income or for loss of <i>Business</i> reputation or for disruption to <i>Business</i> or wasted time on the part of the <i>Buyer's</i> management or staff or, if you are buying the <i>Lot</i> in the course of a <i>Business</i> , for any indirect losses or consequential damages of any kind, irrespective in any case of the nature, volume or source of the loss or damage alleged to be suffered, and irrespective of whether the said loss or damage is caused by or claimed in respect of any negligence, other tort, breach of contract, statutory duty, bailee's duty, a restitutionary claim or otherwise.
		9.2.2	you notify us in writing as soon as reasonably practicable after you have become aware that the <i>Lot</i> is or may be a <i>Forgery</i> , and in any event within one year after the <i>Sale</i> , that the <i>Lot</i> is a <i>Forgery</i> ; and		
		9.2.3	within one month after such notification has been given, you return the <i>Lot</i> to us in the same condition as it was at the time of the <i>Sale</i> , accompanied by written evidence that the <i>Lot</i> is a <i>Forgery</i> and details of the <i>Sale</i> and <i>Lot</i> number sufficient to identify the <i>Lot</i> .		
		9.3	Paragraph 9 will not apply in respect of a <i>Forgery</i> if:		
		9.3.1	the <i>Entry</i> in relation to the <i>Lot</i> contained in the <i>Catalogue</i> reflected the then accepted general opinion of scholars and experts or fairly indicated that there was a conflict of such opinion or reflected the then current opinion of an expert acknowledged to be a leading expert in the relevant field; or		

10.3.2 Unless you buy the *Lot* as a *Consumer*, in any circumstances where we are liable to you in respect of a *Lot*, or any act, omission, statement, representation in respect of it, or this agreement or its performance, and whether in damages, for an indemnity or contribution or for a restitutionary remedy or in any way whatsoever, our liability will be limited to payment of a sum which will not exceed by way of maximum the amount of the *Purchase Price* of the *Lot* plus *Buyer's Premium* (less any sum you may be entitled to recover from the *Seller*) irrespective in any case of the nature, volume or source of any loss or damage alleged to be suffered or sum claimed as due, and irrespective of whether the liability arises from negligence, other tort, breach of contract, statutory duty, bailee's duty, a restitutionary claim or otherwise.

You may wish to protect yourself against loss by obtaining insurance.

10.4 Nothing set out above will be construed as excluding or restricting (whether directly or indirectly) any person's liability or excluding or restricting any person's rights or remedies in respect of (i) fraud, or (ii) death or personal injury caused by our negligence (or any person under our control or for whom we are legally responsible), or (iii) acts or omissions for which we are liable under the Occupiers Liability Act 1957, or (iv) any other liability to the extent the same may not be excluded or restricted as a matter of law, or (v) under our undertaking in paragraph 9 of these conditions.

11 BOOKS MISSING TEXT OR ILLUSTRATIONS

Where the *Lot* is made up wholly of a *Book* or *Books* and any *Book* does not contain text or illustrations (in either case referred to as a "non-conforming *Lot*"), we undertake a personal responsibility for such a non-conforming *Lot* in accordance with the terms of this paragraph, if:

the original invoice was made out by us to you in respect of the *Lot* and that invoice has been paid; and

you notify us in writing as soon as reasonably practicable after you have become aware that the *Lot* is or may be a non-conforming *Lot*, and in any event within 20 days after the *Sale* (or such longer period as we may agree in writing) that the *Lot* is a non-conforming *Lot*; and

within 20 days of the date of the relevant *Sale* (or such longer period as we may agree in writing) you return the *Lot* to us in the same condition as it was at the time of the *Sale*, accompanied by written evidence that the *Lot* is a non-conforming *Lot* and details of the *Sale* and *Lot* number sufficient to identify the *Lot*.

but not if:

the *Entry* in the *Catalogue* in respect of the *Lot* indicates that the rights given by this paragraph do not apply to it; or

the *Entry* in the *Catalogue* in respect of the *Lot* reflected the then accepted general opinion of scholars and experts or fairly indicated that there was a conflict of such opinion; or

it can be established that the *Lot* is a non-conforming *Lot* only by means of a process not generally accepted for use until after the date on which the *Catalogue* was published or by means of a process which it was unreasonable in all the circumstances for us to have employed; or

the *Lot* comprises atlases, maps, autographs, manuscripts, extra illustrated books, music or periodical publications; or

the *Lot* was listed in the *Catalogue* under "collections" or "collections and various" or the *Lot* was stated in the *Catalogue* to comprise or contain a collection, issue or *Books* which are undescribed or the missing text or illustrations are referred to or the relevant parts of the *Book* contain blanks, half titles or advertisements.

If we are reasonably satisfied that a *Lot* is a non-conforming *Lot*, we will (as principal) purchase the *Lot* from you and you will transfer the title to the *Lot* in question to us, with full title guarantee, free from any liens, charges, encumbrances and adverse claims and we will pay to you an amount equal to the sum of the *Purchase Price* and *Buyer's Premium* paid by you in respect of the *Lot*.

The benefit of paragraph 10 is personal to, and incapable of assignment by, you and if you sell or otherwise dispose of your interest in the *Lot*, all rights and benefits under this paragraph will cease.

12 MISCELLANEOUS

12.1 You may not assign either the benefit or burden of this agreement.

12.2 Our failure or delay in enforcing or exercising any power or right under this agreement will not operate or be deemed to operate as a waiver of our rights under it except to the extent of any express waiver given to you in writing. Any such waiver will not affect our ability subsequently to enforce any right arising under this agreement.

12.3 If either party to this agreement is prevented from performing that party's respective obligations under this agreement by circumstances beyond its reasonable control or if performance of its obligations would by reason of such circumstances give rise to a significantly increased financial cost to it, that party will not, for so long as such circumstances prevail, be required to perform such obligations. This paragraph does not apply to the obligations imposed on you by paragraph 3.

12.4 Any notice or other communication to be given under this agreement must be in writing and may be delivered by hand or sent by first class post or air mail or fax transmission (if to *Bonhams* marked for the attention of the Company Secretary), to the address or fax number of the relevant party given in the *Contract Form* (unless notice of any change of address is given in writing). It is the responsibility of the sender of the notice or communication to ensure that it is received in a legible form within any applicable time period.

12.5 If any term or any part of any term of this agreement is held to be unenforceable or invalid, such unenforceability or invalidity will not affect the enforceability and validity of the remaining terms or the remainder of the relevant term.

12.6 References in this agreement to *Bonhams* will, where appropriate, include reference to *Bonhams'* officers, employees and agents.

12.7 The headings used in this agreement are for convenience only and will not affect its interpretation.

12.8 In this agreement "including" means "including, without limitation".

12.9 References to the singular will include reference to the plural (and vice versa) and reference to any one gender will include reference to the other genders.

12.10 Reference to a numbered paragraph is to a paragraph of this agreement.

12.11 Save as expressly provided in paragraph 12.12 nothing in this agreement confers (or purports to

confer) on any person who is not a party to this agreement any benefit conferred by, or the right to enforce any term of, this agreement.

12.12 Where this agreement confers an immunity from, and/or an exclusion or restriction of, the responsibility and/or liability of *Bonhams*, it will also operate in favour and for the benefit of *Bonhams'* holding company and the subsidiaries of such holding company and the successors and assigns of *Bonhams* and of such companies and of any officer, employee and agent of *Bonhams* and such companies, each of whom will be entitled to rely on the relevant immunity and/or exclusion and/or restriction within and for the purposes of Contracts (Rights of Third Parties) Act 1999, which enables the benefit of a contract to be extended to a person who is not a party to the contract, and generally at law.

13 GOVERNING LAW

All transactions to which this agreement applies and all connected matters will be governed by and construed in accordance with the laws of that part of the United Kingdom where the *Sale* takes (or is to take) place and we and you each submit to the exclusive jurisdiction of the courts of that part of the United Kingdom, save that we may bring proceedings against you in any other court of competent jurisdiction to the extent permitted by the laws of the relevant jurisdiction. *Bonhams* has a complaints procedure in place.

DATA PROTECTION – USE OF YOUR INFORMATION

Where we obtain any personal information about you, we shall only use it in accordance with the terms of our Privacy Policy (subject to any additional specific consent(s) you may have given at the time your information was disclosed). A copy of our Privacy Policy can be found on our *Website* www.bonhams.com or requested by post from Customer Services Department, 101 New Bond Street, London W1S 1SR, United Kingdom or by email from info@bonhams.com.

APPENDIX 3

DEFINITIONS AND GLOSSARY

Where these Definitions and Glossary are incorporated, the following words and phrases used have (unless the context otherwise requires) the meanings given to them below. The Glossary is to assist you to understand words and phrases which have a specific legal meaning with which you may not be familiar.

LIST OF DEFINITIONS

"Additional Premium" a premium, calculated in accordance with the *Notice to Bidders*, to cover *Bonhams' Expenses* relating to the payment of royalties under the Artists Resale Right Regulations 2006 which is payable by the *Buyer* to *Bonhams* on any *Lot* marked [AR] which sells for a *Hammer Price* which together with the *Buyer's Premium* (but excluding any VAT) equals or exceeds 1000 euros (converted into the currency of the *Sale* using the European Central Bank Reference rate prevailing on the date of the *Sale*).

"Auctioneer" the representative of *Bonhams* conducting the *Sale*.

"Bidder" Any person considering, attempting or making a Bid, including those who have completed a *Bidding Form*.

"Bidding Form" our Bidding Registration Form, our Absentee Bidding Form or our Telephone Bidding Form.

"Bonhams" *Bonhams* 1793 Limited or its successors or assigns. *Bonhams* is also referred to in the *Buyer's Agreement*, the Conditions of Business and the *Notice to Bidders* by the words "we", "us" and "our".

"Book" a printed *Book* offered for *Sale* at a specialist *Book Sale*.

"Business" includes any trade, *Business* and profession.

"Buyer" the person to whom a *Lot* is knocked down by the *Auctioneer*. The *Buyer* is also referred to in the *Contract for Sale* and the *Buyer's Agreement* by the words "you" and "your".

Bonhams Specialist Departments

19th Century Paintings

London
Charles O' Brien
+44 20 7468 8360
New York
Madalina Lazen
+1 212 644 9108

20th Century British Art

London
Matthew Bradbury
+44 20 7468 8295

20th Century Fine Art

San Francisco
Sonja Moro
+1 415 694 9002

Aboriginal Art

Australia
Francesca Cavazzini
+61 2 8412 2222

African, Oceanic & Pre-Columbian Art

Los Angeles
Fredric W. Backlar
+1 323 436 5416 •

American Paintings

New York
Jennifer Jacobsen
+1 917 206 1699

Antiquities

London
Francesca Hickin
+44 20 7468 8226

Antique Arms & Armour

London
David Williams
+44 20 7393 3807

Art Collections, Estates & Valuations

London
Harvey Cammell
+44 (0) 20 7468 8340
New York
Sherri Cohen
+1 917 206 1671
Los Angeles
Leslie Wright
+1 323 436 5408
Joseph Francaviglia
+1 323 436 5443
Lydia Ganley
+1 323 436 4496
San Francisco
Victoria Richardson
+1 415 503 3207
Celeste Smith
+1 415 503 3214

Australian Art

Australia
Merryn Schriever
+61 2 8412 2222 Alex Clark
+61 3 8640 4088

Australian Colonial Furniture and Australiana

+61 2 8412 2222

Books, Maps & Manuscripts

London
Matthew Haley
+44 20 7393 3817
New York
Ian Ehling
+1 212 644 9094 Darren Sutherland
+1 212 461 6531

Los Angeles

Catherine Williamson
+1 323 436 5442

San Francisco

Adam Stackhouse
+1 415 503 3266

British & European Glass

London
John Sandon
+44 20 7468 8244

British Ceramics

London
John Sandon
+44 20 7468 8244

California & Western Paintings & Sculpture

Los Angeles
Scot Levitt
+1 323 436 5425
Kathy Wong
+1 323 436 5415
San Francisco
Aaron Bastian
+1 415 503 3241

Carpets

London
Helena Gumley-Mason
+44 20 8393 2615

Chinese & Asian Art

London
Asaph Hyman
+44 20 7468 5888
Rosangela Assennato
+44 20 7393 3883
Edinburgh
Ian Glennie
+44 131 240 2299

New York

Bruce MacLaren
+1 917 206 1677

Los Angeles

Rachel Du
+1 323 436 5587

San Francisco

Dessa Goddard
+1 415 503 3333

Hong Kong

Xibo Wang
+852 3607 0010

Sydney

Yvett Klein
+61 2 8412 2231

Chinese Paintings

Hong Kong
Iris Miao,
+852 3607 0011

Clocks

London
James Stratton
+44 20 7468 8364
New York
Jonathan Snellenburg
+1 212 461 6530

Coins & Medals

London
John Millensted
+44 20 7393 3914
Los Angeles
Paul Song
+1 323 436 5455

Entertainment Memorabilia

London
Katherine Schofield
+44 20 7393 3871
Los Angeles
Catherine Williamson
+1 323 436 5442
Dana Hawkes
+1 978 283 1518

European Ceramics

London
Sebastian Kuhn
+44 20 7468 8384

European Paintings

London
Charles O' Brien
+44 20 7468 8360
New York
Madalina Lazen
+1 212 644 9108
Los Angeles
Mark Fisher
+1 323 436 5488
Rocco Rich
+1 323 436 5410

European Sculptures & Works of Art

London
Michael Lake
+44 20 8963 6813

Furniture and Decorative Art

London
Thomas Moore
+44 20 8963 2816
Los Angeles
Angela Past
+1 323 436 5422
Anna Hicks
+1 323 436 5463
San Francisco
Jeffrey Smith
+1 415 215 7385

Greek Art

London
Anastasia Orfanidou
+44 20 7468 8356

Golf Sporting

Memorabilia
Edinburgh
Kevin McGimpsey
Hamish Wilson
+44 131 240 0916

Irish Art

London
Penny Day
+44 20 7468 8366

Impressionist & Modern Art

London
India Phillips
+44 20 7468 8328
New York
Caitlyn Pickens
+1 212 644 9135
Los Angeles
Kathy Wong
+1 323 436 5415

Indian, Himalayan & Southeast

Asian Art
New York
Mark Rasmussen
+1 917 206 1688
Hong Kong
Edward Wilkinson
+852 2918 4321

Islamic & Indian Art

London
Oliver White
+44 20 7468 8303

Japanese Art

London
Suzannah Yip
+44 20 7468 8368
New York
Jeff Olson
+1 212 461 6516

Jewellery

London
Jean Ghika
+44 20 7468 8282
Emily Barber
+44 20 7468 8284
New York
Brett O'Connor
+1 212 461 6525
Caroline Morrissey
+1 212 644 9046
Camille Barbier
+1 212 644 9035
Los Angeles
Emily Waterfall
+1 323 436 5426
San Francisco
Shannon Beck
+1 415 503 3306
Hong Kong
Paul Redmayne
+852 3607 0006

Marine Art

London
Veronique Scorer
+44 20 7393 3962

Mechanical Music

London
Jon Baddeley
+44 20 7393 3872

**Modern & Contemporary
African Art**

London
Giles Peppiatt
+ 44 20 7468 8355
New York
Hayley Grundy
+1 917 206 1624

**Modern & Contemporary
Middle Eastern Art**

London
Nima Sagharchi
+44 20 7468 8342

**Modern & Contemporary
South Asian Art**

London
Tahmina Ghaffar
+44 207 468 8382

**Modern Decorative
Art + Design**

London
Mark Oliver
+44 20 7393 3856
New York
Benjamin Walker
+1 212 710 1306
Dan Tolson
+1 917 206 1611
Los Angeles
Jason Stein
+1 323 436 5466

Motor Cars

London
Tim Schofield
+44 20 7468 5804
New York
Rupert Banner
+1 212 461 6515
Eric Minoff
1 917 206 1630
Evan Ide
+1 917 340 4657
Los Angeles
Jakob Greisen
+1 415 503 3284
Michael Caimano
+1 929 666 2243
San Francisco
Mark Osborne
+1 415 503 3353
Europe
Phillip Kantor
+32 476 879 471

Automobilia

London
Toby Wilson
+44 20 8963 2842
Adrian Pipiros
+44 20 8963 2840

Motorcycles

London
Ben Walker
+44 20 8963 2819
James Stensel
+44 20 8963 2818
Los Angeles
Craig Mallery
+1 323 436 5470

Museum Services

San Francisco
Laura King Pfaff
+1 415 503 3210

Native American Art

San Francisco
Ingmars Lindbergs
+1 415 503 3393

Natural History

Los Angeles
Claudia Florian
+1 323 436 5437
Thomas E. Lindgren
+1 310 469 8567 •

Old Master Pictures

London
Andrew Mckenzie
+44 20 7468 8261
Los Angeles
Mark Fisher
+1 323 436 5488

Orientalist Art

London
Charles O'Brien
+44 20 7468 8360

Photography

New York
Laura Paterson
+1 917 206 1653
Los Angeles & San Francisco
Morisa Rosenberg
+1 323 436 5435
+1 415 503 3259

**Post-War and
Contemporary Art**

London
Ralph Taylor
+44 20 7447 7403
New York
Muys Sniijders,
+212 644 9020
Jacqueline Towers-Perkins,
+1 212 644 9039
Lisa De Simone,
+1 917 206 1607
Los Angeles
Sharon Squires
+1 323 436 5404
Laura Bjorstad
+1 323 436 5446

Prints and Multiples

London
Lucia Tro Santafe
+44 20 7468 8262
New York
Deborah Ripley
+1 212 644 9059
Los Angeles
Morisa Rosenberg
+1 323 447 9374

Russian Art

London
Daria Khristova
+44 20 7468 8334
New York
Yelena Harbick
+1 212 644 9136

Scientific Instruments

London
Jon Baddeley
+44 20 7393 3872
New York
Jonathan Snellenburg
+1 212 461 6530

Scottish Pictures

Edinburgh
Chris Brickley
+44 131 240 2297

Silver & Gold Boxes

London
Ellis Finch
+44 20 7393 3973

Sporting Guns

London
Patrick Hawes
+44 20 7393 3815

Space History

San Francisco
Adam Stackhouse
+1 415 503 3266

Travel Pictures

London
Veronique Scorer
+44 20 7393 3962

**Watches &
Wristwatches**

London
Jonathan Darracott
+44 20 7447 7412
New York
Jonathan Snellenburg
+1 212 461 6530
Hong Kong
Tim Bourne
+852 3607 0021

Whisky

Edinburgh
Martin Green
+44 131 225 2266
Hong Kong
Daniel Lam
+852 2918 4321

Wine

London
Richard Harvey
+44 20 7468 5811
San Francisco
Christine Ballard
+1 415 503 3221
Hong Kong
Daniel Lam
+852 2918 4321

Client Services Departments**U.S.A.****San Francisco**

(415) 861 7500
(415) 861 8951 fax
Monday - Friday, 9am to 5pm

Los Angeles

(323) 850 7500
(323) 850 6090 fax
Monday - Friday, 9am to 5pm

New York

(212) 644 9001
(212) 644 9009 fax
Monday - Friday, 9am to 5pm

Toll Free

(800) 223 2854

U.K.

Monday to Friday 8.30 to 6.00
+44 (0) 20 7447 7447

Bids

+44 (0) 20 7447 7447
+44 (0) 20 7447 7401 fax
To bid via the internet please visit
bonhams.com

• Indicates independent contractor

Bonhams Global Network

International Salerooms

London

101 New Bond Street
London W1S 1SR
+44 20 7447 7447
+44 20 7447 7400 fax

New York

580 Madison Avenue
New York, NY
10022
+1 (212) 644 9001
+1 (212) 644 9007 fax

Hong Kong

Suite 2001
One Pacific Place
88 Queensway
Admiralty
Hong Kong
+852 2918 4321
+852 2918 4320 fax

London

Montpelier Street London
SW7 1HH
+44 20 7393 3900
+44 20 7393 3905 fax

Offices and Associated Companies

AFRICA

Nigeria

Neil Coventry
+234 (0)8110 033 792
+27 (0)7611 20171
neil.coventry@bonhams.com

South Africa - Johannesburg

Penny Culverwell
+27 (0)71 342 2670
penny.culverwell@bonhams.com

AUSTRALIA

Sydney

97-99 Queen Street,
Woollahra, NSW 2025
Australia
+61 (0) 2 8412 2222
+61 (0) 2 9475 4110 fax
info.aus@bonhams.com

Melbourne

Como House
Como Avenue
South Yarra
Melbourne VIC 3141
Australia
+61 (0) 3 8640 4088
+61 (0) 2 9475 4110 fax
info.aus@bonhams.com

ASIA

Beijing

Vivian Zhang
Unit S102A, Beijing
Lufthansa Center,
50 Liangmaqiao Road,
Chaoyang District,
Beijing 100125, China
+86 (0) 10 8424 3188
beijing@bonhams.com

Singapore

Bernadette Rankine
11th Floor, Wisma Atria
435 Orchard Road
Singapore 238877
+65 (0) 6701 8038
+65 (0) 6701 8001 fax
bernadette.rankine@bonhams.com

Taiwan

Jenny Tsai
37th Floor, Taipei 101
Tower
No. 7 Xinyi Road,
Section 5
Taipei, 100
+886 2 8758 2898
+886 2 8758 2897 fax
taiwan@bonhams.com

EUROPE

Austria

Thomas Kamm
+49 (0) 89 2420 5812
austria@bonhams.com

Belgium

Boulevard
Saint-Michel 101
1040 Brussels
+32 (0) 2 736 5076
belgium@bonhams.com

France

4 rue de la Paix
75002 Paris
+33 (0) 1 42 61 10 10
paris@bonhams.com

Germany - Cologne

Katharina Schmid
+49 (0) 221 9865 3419
+49 (0) 157 9234 6717
cologne@bonhams.com

Germany - Hamburg

Marie Becker Lingenthal
+49 (0) 17 4236 0022
hamburg@bonhams.com

Germany - Munich

Maximilianstrasse 52
80538 Munich
+49 (0) 89 2420 5812
munich@bonhams.com

Germany - Stuttgart

Neue Brücke 2
New Bridge Offices
70173 Stuttgart
+49 (0) 711 2195 2640
+49 (0) 157 9234 6717
stuttgart@bonhams.com

Greece

7 Neofytou Vamva
Street
Athens 10674
+30 (0) 210 3636 404
athens@bonhams.com

Ireland

31 Molesworth Street
Dublin 2
+353 (0) 1 602 0990
ireland@bonhams.com

Italy - Milan

Via Boccaccio 22
20123 Milano
+39 0 2 4953 9020
milan@bonhams.com

Italy - Rome

Via Sicilia 50
00187 Roma
+39 06 485 900
rome@bonhams.com

The Netherlands

De Lairessestraat 154
1075 HL Amsterdam
+31 (0) 20 67 09 701
amsterdam@bonhams.com

Portugal

Rua Bartolomeu Dias
nº160. 1º
Belem
1400-031 Lisbon
+351 218 293 291
portugal@bonhams.com

Spain - Barcelona

Teresa Ybarra
+34 930 156 686
+34 680 347 606
barcelona@bonhams.com

Spain - Madrid

Núñez de Balboa no
4-1C
28001 Madrid
+34 915 78 17 27
madrid@bonhams.com

Switzerland - Geneva

Rue Etienne-Dumont 10
1204 Geneva
+41 (0) 22 300 3160
geneva@bonhams.com

Switzerland - Zurich

Andrea Bodmer
Dreikönigstrasse 31a
8002 Zürich
+41 44 281 9535
zurich@bonhams.com

NORTH AMERICA

USA

Representatives:
Arizona
Terri Adrian-Hardy
+1 (602) 859 1843
arizona@bonhams.com

California Central Valley

David Daniel
+1 (916) 364 1645
sacramento@bonhams.com

California Palm Springs

Brooke Sivo
+1 (760) 350 4255
palmsprings@bonhams.com

California San Diego

Brooke Sivo
+1 (760) 567 1744
sandiego@bonhams.com

Colorado

Lance Vigil
+1 (720) 355 3737
colorado@bonhams.com

Florida

April Matteini
+1 (305) 978 2459
Miami@bonhams.com
Alexis Butler
+1 (305) 878 5366
Miami@bonhams.com

Georgia

Mary Moore Bethea
+1 (404) 842 1500
georgia@bonhams.com

Illinois & Midwest

Natalie B. Waechter
+1 (773) 267 3300
Shawn Marsh
+1 (773) 680 2881
chicago@bonhams.com

Edinburgh

22 Queen Street
Edinburgh
EH2 1JX
+44 131 225 2266
+44 131 220 2547 fax

Los Angeles

7601 W. Sunset Boulevard
Los Angeles
CA 90046
+1 (323) 850 7500
+1 (323) 850 6090 fax

San Francisco

220 San Bruno Avenue
San Francisco
CA 94103
+1 (415) 861 7500
+1 (415) 861 8951 fax

Massachusetts

Amy Corcoran
+1 (617) 742 0909
boston@bonhams.com

Nevada

David Daniel
+1 (775) 831 0330
nevada@bonhams.com

New Mexico

Terri Adrian-Hardy
+1 (602) 859 1843
newmexico@bonhams.com

Oregon

Sheryl Acheson
+1 (971) 727 7797
oregon@bonhams.com

Texas – Dallas

Mary Holm
+1 (214) 557 2716
dallas@bonhams.com

Texas – Houston

Lindsay Davis
+1 (713) 855 7452
texas@bonhams.com

Virginia

Gertraud Hechl
+1 (202) 422 2733
virginia@bonhams.com

Washington

Heather O'Mahony
+1 (206) 566 3913
seattle@bonhams.com

**Washington DC
Mid-Atlantic Region**

Gertraud Hechl
+1 (202) 422 2733
washingtonDC@bonhams.com

Canada**Toronto, Ontario**

Kristin Kearney
340 King St East
2nd Floor, Office 213
Toronto ON
M5A 1K8
+1 (416) 462 9004
info.ca@bonhams.com

Montreal, Quebec

+1 (514) 209 2377
info.ca@bonhams.com

MIDDLE EAST**Israel**

Joslyne Halibard
+972 (0)54 553 5337
joslyne.halibard@bonhams.com

SOUTH AMERICA**Brazil**

+55 11 3031 4444
+55 11 3031 4444
fax

UNITED KINGDOM**South East England****Guildford**

Millmead,
Guildford,
Surrey GU2 4BE
+44 1483 504 030
+44 1483 450 205
fax

Isle of Wight

+44 1273 220 000

Representative:

Brighton & Hove
Tim Squire-Sanders
+44 1273 220 000

West Sussex

+44 (0) 1273 220 000

South West England**Bath**

Queen Square House
Charlotte Street
Bath BA1 2LL
+44 1225 788 988
+44 1225 446 675
fax

Cornwall – Truro

36 Lemon Street
Truro
Cornwall
TR1 2NR
+44 1872 250 170
+44 1872 250 179
fax

Exeter

The Lodge
Southernhay West
Exeter, Devon
EX1 1JG
+44 1392 425 264
+44 1392 494 561
fax

Tetbury

Eight Bells House
14 Church Street
Tetbury
Gloucestershire
GL8 8JG
+44 1666 502 200
+44 1666 505 107
fax

Representatives:

Dorset
Matthew Lacey
+44 1935 815 271

East Anglia and Bury St. Edmunds

Michael Steel
+44 1284 716 190

Norfolk

The Market Place
Reepham
Norfolk NR10 4JJ
+44 1603 871 443
+44 1603 872 973
fax

Midlands**Knowle**

The Old House
Station Road
Knowle, Solihull
West Midlands
B93 0HT
+44 1564 776 151
+44 1564 778 069
fax

Oxford

Banbury Road
Shipton on Cherwell
Kidlington OX5 1JH
+44 1865 853 640
+44 1865 372 722
fax

Yorkshire & North East England**Leeds**

The West Wing
Bowcliffe Hall
Bramham
Leeds
LS23 6LP
+44 113 234 5755
+44 113 244 3910
fax

North West England**Chester**

2 St Johns Court,
Vicars Lane,
Chester,
CH1 1QE
+44 1244 313 936
+44 1244 340 028
fax

Manchester

The Stables
213 Ashley Road
Hale WA15 9TB
+44 161 927 3822
+44 161 927 3824
fax

Channel Islands**Jersey**

La Chasse
La Rue de la Vallee
St Mary
Jersey JE3 3DL
+44 1534 722 441
+44 1534 759 354
fax

Representative:

Guernsey
+44 1481 722 448

Scotland**Bonhams West of Scotland**

Kirkhill House
Broom Road East
Newton Mearns
Glasgow
G77 5LL
+44 141 223 8866

Wales**Representatives:**

Cardiff
Jeff Muse
+44 2920 727 980

Registration and Bidding Form

(Attendee / Absentee / Online / Telephone Bidding)

Please circle your bidding method above.

<input type="checkbox"/>	<input type="checkbox"/>	<input type="checkbox"/>	<input type="checkbox"/>
--------------------------	--------------------------	--------------------------	--------------------------

Paddle number (for office use only)

Bonhams

This sale will be conducted in accordance with Bonhams' Conditions of Sale and bidding and buying at the Sale will be regulated by these Conditions. You should read the Conditions in conjunction with the Sale Information relating to this Sale which sets out the charges payable by you on the purchases you make and other terms relating to bidding and buying at the Sale. You should ask any questions you have about the Conditions before signing this form. These Conditions also contain certain undertakings by bidders and buyers and limit Bonhams' liability to bidders and buyers.

Data protection – use of your information

Where we obtain any personal information about you, we shall only use it in accordance with the terms of our Privacy Policy (subject to any additional specific consent(s) you may have given at the time your information was disclosed). A copy of our Privacy Policy can be found on our website (www.bonhams.com) or requested by post from Customer Services Department, 101 New Bond Street, London W1S 1SR United Kingdom or by e-mail from info@bonhams.com. We may disclose your personal information to any member of our group which means our subsidiaries, our ultimate holding company and its subsidiaries (whether registered in the UK or elsewhere). We will not disclose your data to anyone outside our group but we may from time to time provide you with information about goods and services which we feel maybe of interest to you including those provided by third parties.

Would you like to receive information from us by email? or post

Notice to Bidders.

At least 24 hours before the Sale, clients must provide government or state issued photographic proof of ID and date of birth e.g. - passport, driving licence - and if not included in ID document, proof of address e.g - utility bill, bank or credit card statement etc. Corporate clients should also provide a copy of their articles of association / company registration documents, and the entities name and registered address, documentary proof of its beneficial owners and directors, together with a letter authorising the individual to bid on the company's behalf. Failure to provide this may result in your bids not being processed or completed. For higher value lots you may also be asked to provide a bank reference.

If successful

I will collect the purchases myself

Please arrange shippers to contact me with a quote and I agree that you may pass them my contact details.

Sale title: Asian Art		Sale date: Thursday 11 July 2019													
Sale no. 25367		Sale venue: Edinburgh													
<p>If you are not attending the sale in person, please provide details of the Lots on which you wish to bid at least 24 hours prior to the sale. Bids will be rounded down to the nearest increment. Please refer to the Notice to Bidders in the catalogue for further information relating to Bonhams executing telephone, online or absentee bids on your behalf. Bonhams will endeavour to execute these bids on your behalf but will not be liable for any errors or failing to execute bids.</p> <p>General Bid Increments:</p> <table border="0"> <tr> <td>£10 - 200by 10s</td> <td>£10,000 - 20,000by 1,000s</td> </tr> <tr> <td>£200 - 500by 20 / 50 / 80s</td> <td>£20,000 - 50,000by 2,000 / 5,000 / 8,000s</td> </tr> <tr> <td>£500 - 1,000by 50s</td> <td>£50,000 - 100,000by 5,000s</td> </tr> <tr> <td>£1,000 - 2,000by 100s</td> <td>£100,000 - 200,000by 10,000s</td> </tr> <tr> <td>£2,000 - 5,000by 200 / 500 / 800s</td> <td>above £200,000at the auctioneer's discretion</td> </tr> <tr> <td>£5,000 - 10,000by 500s</td> <td></td> </tr> </table> <p>The auctioneer has discretion to split any bid at any time.</p>				£10 - 200by 10s	£10,000 - 20,000by 1,000s	£200 - 500by 20 / 50 / 80s	£20,000 - 50,000by 2,000 / 5,000 / 8,000s	£500 - 1,000by 50s	£50,000 - 100,000by 5,000s	£1,000 - 2,000by 100s	£100,000 - 200,000by 10,000s	£2,000 - 5,000by 200 / 500 / 800s	above £200,000at the auctioneer's discretion	£5,000 - 10,000by 500s	
£10 - 200by 10s	£10,000 - 20,000by 1,000s														
£200 - 500by 20 / 50 / 80s	£20,000 - 50,000by 2,000 / 5,000 / 8,000s														
£500 - 1,000by 50s	£50,000 - 100,000by 5,000s														
£1,000 - 2,000by 100s	£100,000 - 200,000by 10,000s														
£2,000 - 5,000by 200 / 500 / 800s	above £200,000at the auctioneer's discretion														
£5,000 - 10,000by 500s															
Customer Number		Title													
First Name		Last Name													
Company name (to be invoiced if applicable)															
Address															
City		County / State													
Post / Zip code		Country													
Telephone mobile		Telephone daytime													
Telephone evening		Fax													
Preferred number(s) in order for Telephone Bidding (inc. country code)															
E-mail (in capitals)															
By providing your email address above, you authorise Bonhams to send to this address information relating to Sales, marketing material and news concerning Bonhams. Bonhams does not sell or trade email addresses.															
I am registering to bid as a private buyer <input type="checkbox"/>		I am registering to bid as a trade buyer <input type="checkbox"/>													
If registered for VAT in the EU please enter your registration here: □□ / □□□ - □□□□ - □□		Please tick if you have registered with us before <input type="checkbox"/>													

Please note that all telephone calls are recorded.

Telephone or Absentee (T / A)	Lot no.	Brief description	MAX bid in GBP (excluding premium & VAT)	Covering bid ★

FOR WINE SALES ONLY	
Please leave lots "available under bond" in bond <input type="checkbox"/>	Please include delivery charges (minimum charge of £20 + VAT) <input type="checkbox"/>

BY SIGNING THIS FORM YOU AGREE THAT YOU HAVE SEEN THE CATALOGUE AND HAVE READ AND UNDERSTOOD OUR CONDITIONS OF SALE INCLUDING BUYER'S WARRANTIES AND WISH TO BE BOUND BY THEM, AND AGREE TO PAY THE BUYER'S PREMIUM, VAT AND ANY OTHER CHARGES MENTIONED IN THE NOTICE TO BIDDERS. THIS AFFECTS YOUR LEGAL RIGHTS.	
Your signature:	Date:

★ Covering Bid: A maximum bid (exclusive of Buyers Premium and VAT) to be executed by Bonhams only if we are unable to contact you by telephone, or should the connection be lost during bidding.

NB. Payment will only be accepted from an account in the same name as shown on the invoice and Auction Registration form.

Please email or fax the completed Auction Registration form and requested information to:

Bonhams, Customer Services, 101 New Bond Street, London, W1S 1SR. Tel: +44 (0) 20 7447 7447 Fax: +44 (0) 20 7447 7401, bids@bonhams.com

Bonhams 1793 Limited. Montpelier Street, London SW7 1HH. Incorporated in England. Company Number 4326560.



Bonhams
22 Queen Street
Edinburgh EH2 1JX

+44 (0) 131 225 2266
bonhams.com

AUCTIONEERS SINCE 1793